

Inverter default AC voltage range





Overview

What voltage does an inverter use?

In different countries, the applicable AC voltage is different, and most countries use 110v, 120v output inverter voltage. You can confirm on the search engine or see how much AC voltage the home appliance label uses. How can the quality of inverter output voltage be measured?

.

What are inverter specifications?

Specifications provide the values of operating parameters for a given inverter. Common specifications are discussed below. Some or all of the specifications usually appear on the inverter data sheet. Maximum AC output power This is the maximum power the inverter can supply to a load on a steady basis at a specified output voltage.

What is the output voltage and frequency of the inverter?

AC output voltage and frequency The inverter is set by default at 230Vac 50Hz. The AC output voltage and frequency can be set to a different value according to the table below. 4.2. ECO mode and ECO settings The inverter is equipped with ECO mode.

What is AC output voltage?

AC output voltage This value indicates to which utility voltages the inverter can connect. For inverters designed for residential use, the output voltage is 120 V or 240 V at 60 Hz for North America. It is 230 V at 50 Hz for many other countries. Peak Efficiency The peak efficiency is the highest efficiency that the inverter can achieve.



Inverter default AC voltage range



[AC output voltage and frequency](#)

Oct 22, 2025 · The inverter is set by default at 120Vac, 60Hz. The AC output voltage and frequency can be set to different values according to the table below.

What is acceptable range for AC Voltage output when using ...

What is acceptable range for AC Voltage output when using IEEE 1547 default 2015, as Grid Profile Settings with an IQ7+ microinverter install baseline within a 240 volt utility system? A ...



[How To Read And Interpret An Inverter ...](#)

4 days ago · Output Voltage Output Voltage states the AC voltage produced by the inverter, usually 120V or 230V, depending on the applicable ...

[What does the inverter voltage specifications represent?](#)

5 days ago · This is the inverter's AC range (relating to its nominal output). Since grid voltage fluctuates constantly, the inverter has to adjust to that voltage within a given window. For ...



[Appendix E: Inverter Settings](#)

Sep 6, 2025 · Appendix E: Inverter Settings
Inverter settings must be configured in advance by Tesla. Talk to your Tesla representative if any of the default settings should be modified. The ...



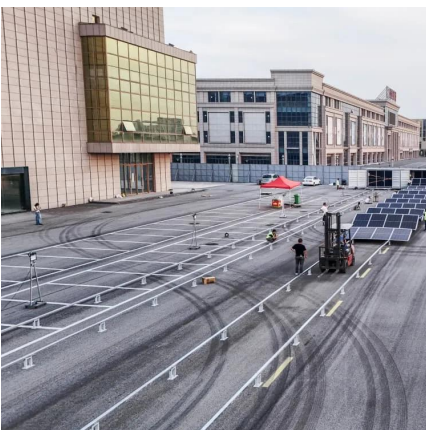
[Understanding inverter voltage](#)

Jan 10, 2024 · In this article, let's embark on a comprehensive journey to unravel the mysteries surrounding inverter voltage, exploring its nuances, ...



[How to read inverter data sheet in 5 easy steps- InkPV](#)

DC Input Voltage Range: 10.5-15VDC(Single battery voltage) This means for the 5KW48V inverter, battery range is 42V-60V. The battery range is important to understand. And this is ...





[How To Read And Interpret An Inverter Specification](#)

4 days ago · Output Voltage Output Voltage states the AC voltage produced by the inverter, usually 120V or 230V, depending on the applicable regional standards. It is important to match ...



[Understanding inverter voltage](#)

Jan 10, 2024 · In this article, let's embark on a comprehensive journey to unravel the mysteries surrounding inverter voltage, exploring its nuances, applications, and the Tycorun inverter's ...

4. Configuration

Apr 23, 2025 · 4.1. AC output voltage and frequency The inverter is set by default at 230Vac 50Hz. The AC output voltage and frequency can be set to a different value according to the ...



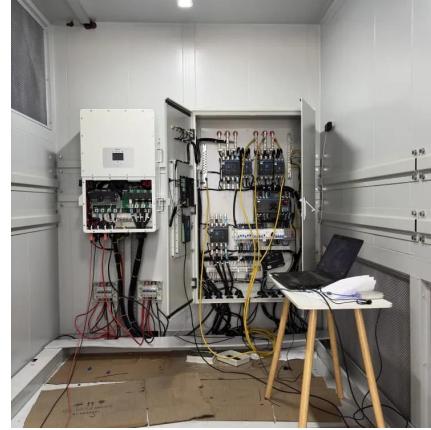
[How to read inverter data sheet in 5 easy ...](#)

DC Input Voltage Range: 10.5-15VDC(Single battery voltage) This means for the 5KW48V inverter, battery range is 42V-60V. The battery range is ...



[A comprehensive guide to inverter voltage](#)

Dec 18, 2024 · What is a 12VDC to 120VAC inverter? 12VDC to 120VAC Inverter is a common device that converts 12V DC power to AC power with a nominal output of 120V. 120 volts AC ...

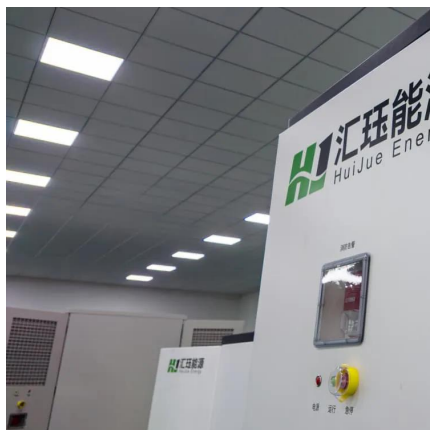


[What is acceptable range for AC Voltage ...](#)

What is acceptable range for AC Voltage output when using IEEE 1547 default 2015, as Grid Profile Settings with an IQ7+ microinverter install ...

[Inverter Specifications and Data Sheet](#)

Dec 18, 2024 · What is a 12VDC to 120VAC inverter? 12VDC to 120VAC Inverter is a common device that converts 12V DC power to AC power ...



[Inverter Specifications and Data Sheet](#)

2 days ago · The article provides an overview of inverter functions, key specifications, and common features found in inverter systems, along with an example of power calculations and ...



Contact Us

For technical specifications, project proposals, or partnership inquiries, please visit:
<https://www.eiei.pl>

Scan QR Code for More Information



<https://www.eiei.pl>