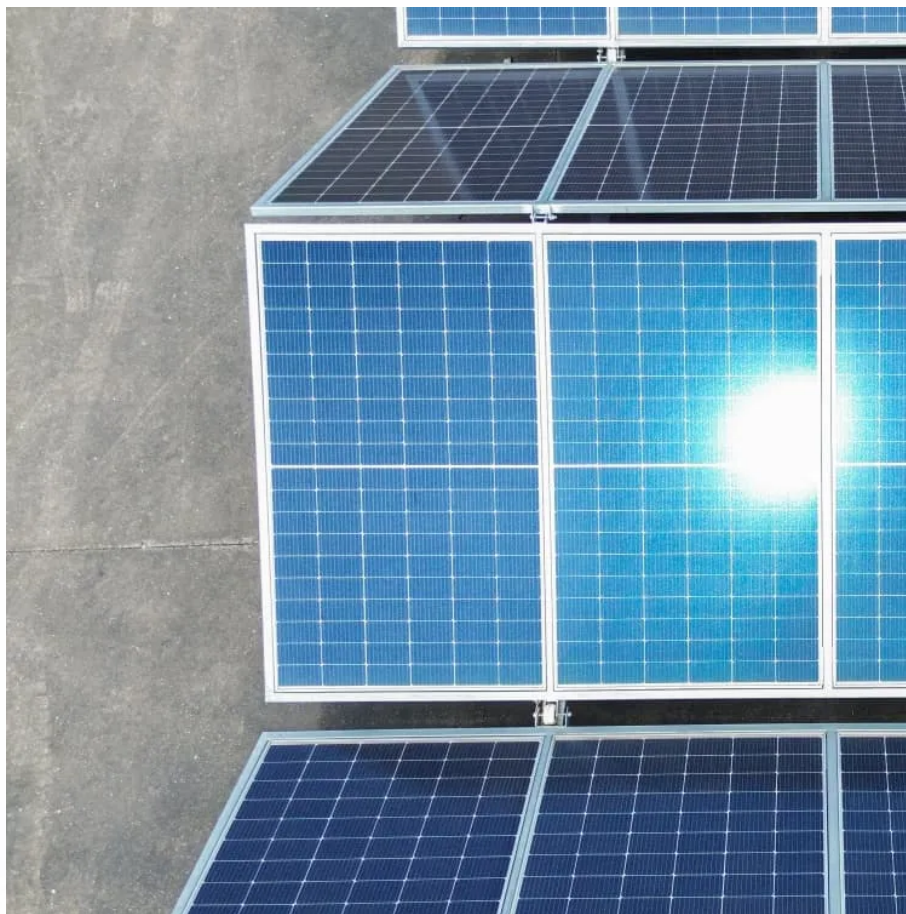


Inverter 36v to 220 volts





Overview

What is a 220V power inverter?

A 220 volt power inverter converts direct current to conventional alternating current. It can be used to run electronic equipment when there is no normal power supply. Sam Stores stocks a wide range of power inverters to match your needs.

What is a 36 volt inverter?

Looking for a 36 V inverter is often harder than finding a 12 V or 24V inverter since they are less common. Although not used as often, they still serve important roles in mid-range power applications. All of these higher-voltage systems should be used when powering equipment that draws over 3,000 W. Higher voltage is important for several reasons.

How do I get 220V from a 110 volt inverter?

You would have to get a step-up transformer (perhaps auto-wound for lower costs) to get 220 from a 110 inverter. Re: 220v from two inverters?

Aloha, Can I parallel two of the same MSW inverters @ 110v each and get 220v single phase?

If so, then would I tie the two neutrals together?

Reference my system below. thanks.

What voltage should a solar inverter match?

Your inverter should match the DC voltage of your battery or solar system—e.g., 36 V input for a 36 V battery bank. Mismatches can cause poor performance or damage. Try to operate your inverter at around 70–80% of its continuous rating to maximize efficiency and lifespan.



Inverter 36v to 220 volts



[Hybrid Powerful inverter 36v to 220v for Varied Uses](#)

The output voltage of 36v to 220v inverters is the mains voltage to be supplied by the inverter, which in this case is 220 volts. They also have output frequencies, usually around 50 or 60 Hz, ...

[Power Pure Sine Wave Inverter 2500W DC 36V To AC220-240V](#)

Nov 17, 2020 · Buy Power Pure Sine Wave Inverter 2500W DC 36V To AC220-240V: Power Inverters - Amazon FREE DELIVERY possible on eligible purchases



Inverter 36V 220V

A 36V to 220V inverter is used to convert the battery's 36V DC power to 220V AC power, which can be used to power a household. It is a device that converts the electricity from a battery into ...

[36V to 220V DC converter](#)

Aug 30, 2025 · 36V to 220V DC/DC converter, 400W The DY400-DD220-50R is a 220V converter of 400W. The converter can convert 36V to 220V DC and supply a DC current of 1,8A.



[Inverter 36v to 220v ac](#)

An inverter 36V to 220V AC is an essential device that enables the conversion of low voltage direct current (DC) from a 36V battery system into high voltage alternating current (AC) ...



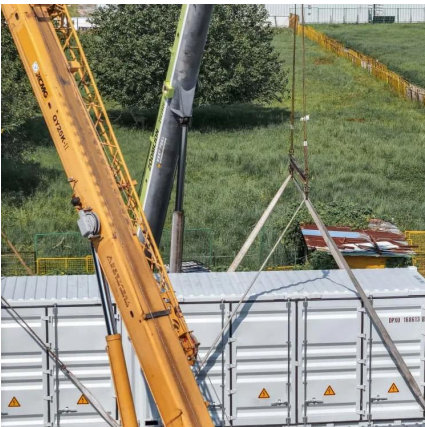
[Converter 36V to 220V AC](#)

A 36V to 220V converter, also known as a DC-to-AC inverter, is designed to convert 36 volts of direct current (DC) power--typically from batteries or renewable energy sources--into 220 ...



[Converter 36V to 220V AC](#)

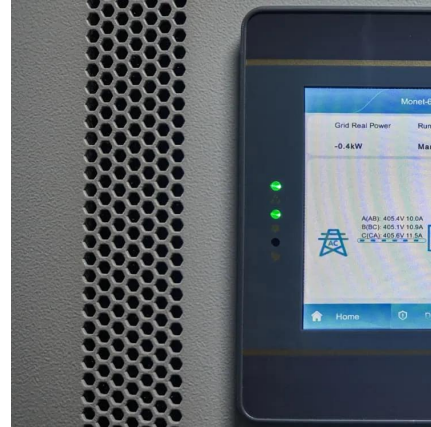
Feb 18, 2025 · A 36V to 220V converter, also known as a DC-to-AC inverter, is designed to convert 36 volts of direct current (DC) power--typically from batteries or renewable energy ...





[36 v to 220 v inverter](#)

Jun 25, 2024 · Results for 36 v to 220 v inverter
Looking for a good deal on 36 v to 220 v inverter? Explore a wide range of the best 36 v to 220 v inverter on AliExpress to find one that suits you! ...



[Hybrid Powerful inverter 36v to 220v for Varied Uses](#)

Jan 10, 2025 · The output voltage of 36v to 220v inverters is the mains voltage to be supplied by the inverter, which in this case is 220 volts. They also have output frequencies, usually around ...

[Inverters 36V To 220V](#)

Jun 25, 2024 · Looking for inverters 36v to 220v? If you want to choose from a wide range of great and affordable products, visiting AliExpress is your first choice. AliExpress has a huge ...



[The Best 36 Volt Power Inverters . SolarKnowHow](#)

The 3000W Pure Sine Wave Inverter (3000W36V) converts 36V DC power to efficient 110V/120V AC electricity. It is a good choice for cars, solar, and off-grid setups.



Amazon : 36v Inverter

WZRELB 2500W 36V Pure Sine Wave Inverter,36 Volt DC to AC 120V 240V Split Phase Power Inverter,5KW Surge,5 AC Outlets,AC Hardwire Terminal,High Efficiency up to 91.6%,Wireless ...



[The Best 36 Volt Power Inverters](#)

The 3000W Pure Sine Wave Inverter (3000W36V) converts 36V DC power to efficient 110V/120V AC electricity. It is a good choice for cars, solar, and ...

Contact Us

For technical specifications, project proposals, or partnership inquiries, please visit:
<https://www.eiei.pl>

Scan QR Code for More Information



<https://www.eiei.pl>