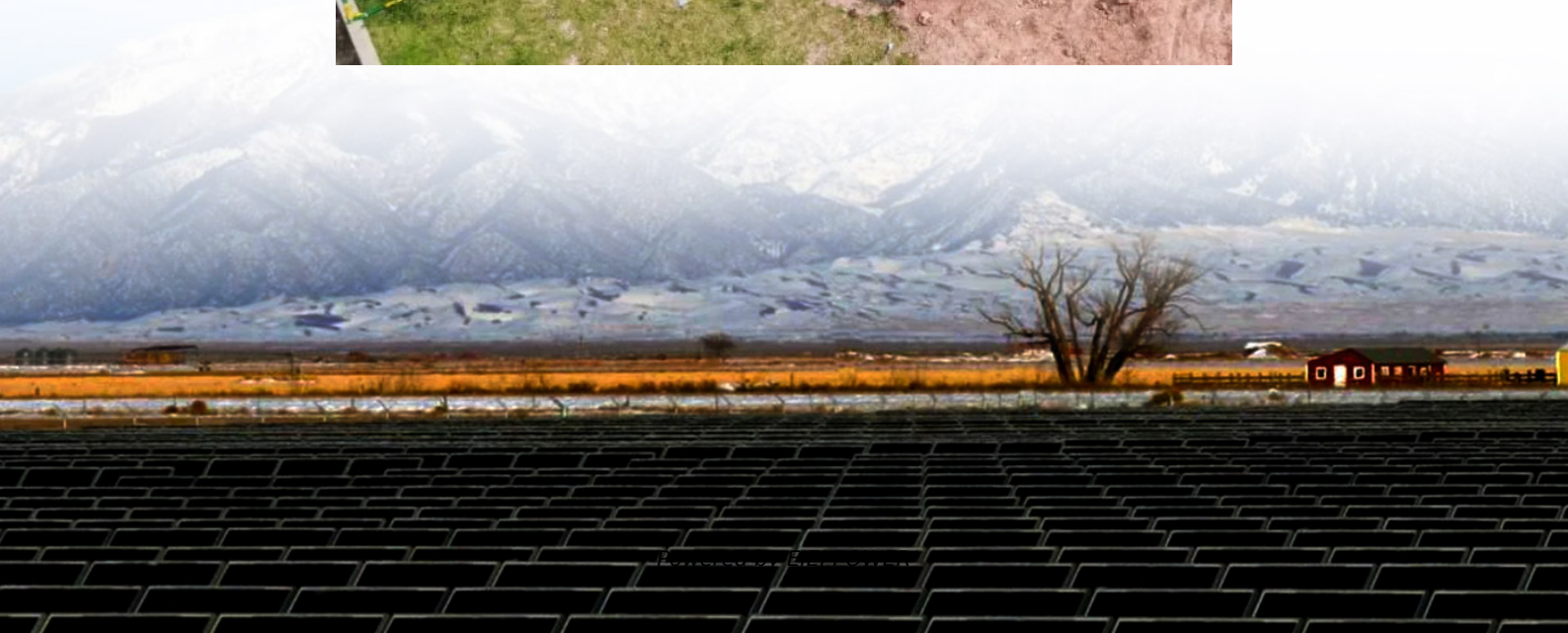


Indoor base station outdoor received information





Overview

Can 5G signal base station be used for indoor positioning?

As commercial 5G systems rapidly expand, indoor positioning using 5G signals holds great potential for serving a large number of users. In this paper, an effective fingerprint solution is proposed for indoor positioning with 5G signal base station by exploring the multi-beam property.

Is a single-base-station positioning algorithm suitable for long and narrow indoor environments?

With the rapid advancement of indoor positioning technology, improving cost-effectiveness, positioning accuracy, and base station (BS) deployment efficiency in typical indoor scenarios remains a pressing challenge. This paper proposes a single-base-station positioning algorithm tailored for long and narrow indoor environments.

Can UWB positioning algorithms achieve high-precision positioning with fewer base stations?

The UWB positioning algorithms proposed in this paper effectively achieve high-precision positioning with fewer base stations in both long and narrow indoor environments and conventional indoor scenarios.

Can SBS positioning be used in long and narrow indoor environments?

To address these issues while balancing cost effectiveness and BS deployment efficiency, an SBS positioning algorithm is proposed for narrow and long indoor environments. To achieve SBS positioning in long and narrow indoor environments, the geometric characteristics of such environments must first be defined.



Indoor base station outdoor received information



[Research on Indoor Multi-Scene Base Station Deployment ...](#)

Dec 30, 2024 · In indoor positioning scenarios, the deployment of base stations plays a crucial role in the accuracy of positioning information. In recent years, how to reasonably deploy base ...

[Xiaomi Outdoor Camera Base Station](#)

The base station supports a large storage capacity, allowing videos to be stored locally and securely on SD cards ranging from 16GB to 256GB. ...



[HUAWEI LampSite 5 Series](#)

HUAWEI LampSite 5 Series Indoor Base Station Huawei Technologies LampSite 5 series is Huawei's latest 5G indoor distributed network ...

[Shanghai Leads China for Outdoor 5G Base ...](#)

(Yicai) Dec. 13 -- Shanghai continues to lead China in the number of outdoor base stations for fifth-generation mobile network technology, the city's ...



[Shanghai Leads China for Outdoor 5G Base Stations, Vice](#)

(Yicai) Dec. 13 -- Shanghai continues to lead China in the number of outdoor base stations for fifth-generation mobile network technology, the city's vice mayor revealed. Shanghai has built ...



[Alcatel-Lucent 8379 DECT IBS](#)

Dec 3, 2025 · 8379 DECT IBS The Alcatel-Lucent 8379 DECT IBS forms a robust infrastructure for Digital Enhanced Cordless Telecommunications (DECT) both in buildings and outdoors, to ...



[Indoor and Outdoor Fusion Positioning and Security](#)

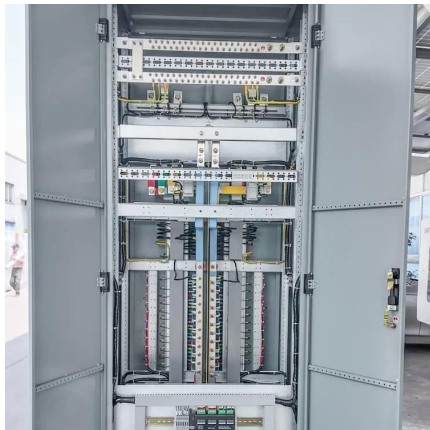
Jun 22, 2021 · Location information service is especially important in complex environment. With the increasing demand of Beidou satellite navigation system in China, Beidou satellite ...





[Mobility Report: 5G building penetration](#)

Dec 2, 2025 · New methods are being developed to accurately estimate the proportion of traffic in outdoor base stations that is due to indoor activity. Two distinct but interrelated approaches to ...

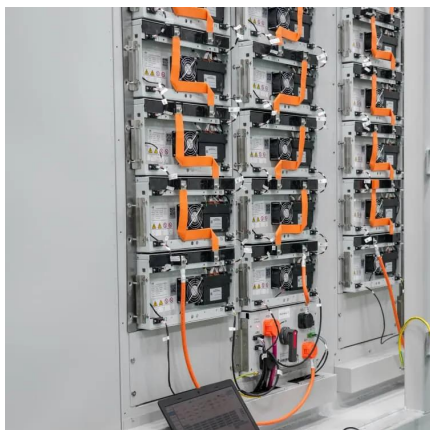


Application Research on the Integration of Indoor UWB Positioning Base

Apr 30, 2025 · In the substation environment of the power system, accurate positioning technology is of great significance for ensuring personnel safety, improving operation and ...

[Indoor and Outdoor Fusion Positioning System Based on...](#)

Oct 8, 2024 · As positioning technology advances, the popularity of Ultra-Wideband (UWB) positioning in indoor applications continues to grow. However, UWB faces many challenges in ...



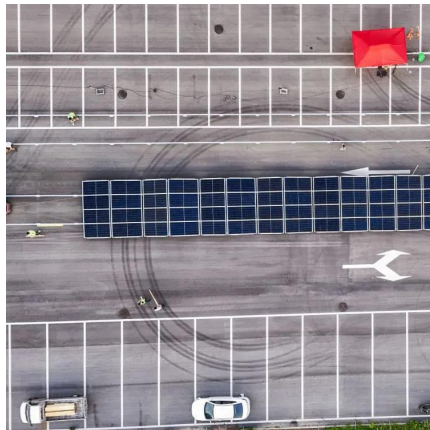
[Research on Indoor Multi-Scene Base Station ...](#)

Dec 30, 2024 · In indoor positioning scenarios, the deployment of base stations plays a crucial role in the accuracy of positioning information. In ...



[Alcatel-Lucent 8378 DECT IP-xBS](#)

Dec 3, 2025 · 8378 DECT IP-xBS handover and roaming capabilities on OXE extend the mobile coverage of TDM DECT networks, based on Alcatel-Lucent 4070 and 8379 DECT Base ...



[Enhancing 5G indoor mobile coverage with SUDAS](#)

Jun 5, 2024 · For indoor scenarios, a mm-wave backhaul link between indoor and outdoor base stations would suffer from extreme penetration losses. Apart from this, indoor coverage ...

[A high-accuracy indoor positioning system based on UWB](#)

Nov 26, 2021 · Abstract. In this paper, a high-accuracy indoor positioning system based on the ultra-wideband (UWB) technique is proposed. The proposed system uses a simple ranging ...



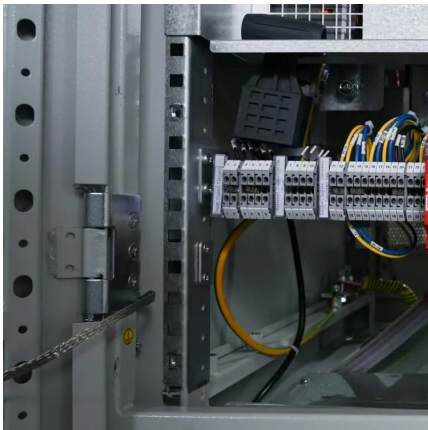
UWB single/dual base station positioning algorithms for typical indoor

Dec 1, 2025 · With the rapid advancement of indoor positioning technology, improving cost-effectiveness, positioning accuracy, and base station (BS) deployment efficiency in typical ...



Indoor Positioning With Multibeam CSI From a Single 5G Base Station

Dec 1, 2023 · Fifth-generation (5G) networks have been deployed to serve a massive number of users. The new properties of 5G, such as large bandwidth, high data rates, and extensive ...

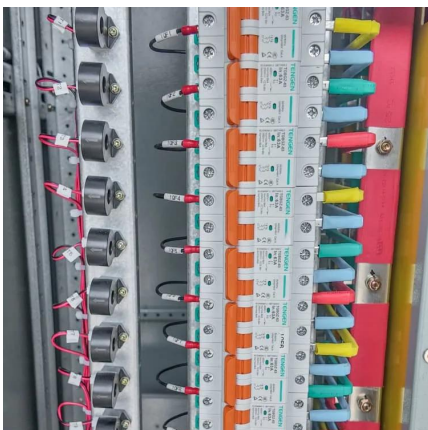


[Comparison of Signal Strength Prediction Models for ...](#)

With the growth of wireless communication in both indoor-to-outdoor and outdoor-to-indoor areas, getting the strong received signal power is also essential for the users [8]. Therefore, it has ...

[Indoor positioning with multi-beam CSI of commercial 5G ...](#)

Jan 2, 2024 · However, 5G technology primarily serves communication purposes. Therefore, in common urban indoor scenarios, the number of 5G base stations, known as gNBs, that can ...



[Indoor Localization in Commercial 5G Environment with ...](#)

Oct 22, 2024 · Abstract As commercial 5G systems rapidly expand, indoor positioning using 5G signals holds great potential for serving a large number of users. In this paper, an effective ...



Tightly coupled integration of Visible Light

May 1, 2025 · Seamless Indoor/Outdoor (IO) positioning plays a critical role in delivering a comprehensive navigation experience, facilitating uninterrupted user guidance across complex ...



Contact Us

For technical specifications, project proposals, or partnership inquiries, please visit:
<https://www.eiei.pl>

Scan QR Code for More Information



<https://www.eiei.pl>