

Hybrid energy maintenance issues in base station rooms





Overview

Why do we need a hybrid energy system?

Promoting equality and employment creation can also improve the region's social and environmental characteristics. A hybrid energy system will assure energy security and reliability, especially when it has a variety of various heterogeneous energy supplies.

Are base transceiver stations environmentally friendly?

The only electrical source currently in service in the Base Transceiver Stations (BTS) is a diesel generator. As a result, diesel generators are not economical and are not environmentally friendly. Therefore, these sites must integrate sustainable energy sources like wind and solar [4].

Are hybrid BTS sites good for Pakistan's telecom industry?

Hybrid BTS sites are, therefore, more economical and environmentally friendly regarding worries about global warming and long-term system functioning with no pollution. In conclusion, building improved BTS sites has positive technical, environmental, and financial effects on Pakistan's telecom industry.

What is a base transceiver station?

The base transceiver station is one of the main components of cell sites that consume energy. Diesel fuel purchases for generators, which make up over 80 % of plant-level energy expenditures at off-grid and off-grid tower sites, are the primary source of these costs.



Hybrid energy maintenance issues in base station rooms



Techno-economic assessment and optimization framework with energy

Nov 15, 2023 · Techno-economic assessment and optimization framework with energy storage for hybrid energy resources in base transceiver stations-based infrastructure across various ...

[Hybrid Electrical Energy Supply System with Different ...](#)

5 days ago · This study presents modeling and simulation of a stand-alone hybrid energy system for a base transceiver station (BTS). The system is consisted of a wind and turbine ...



[Base Station Energy Storage Hybrid: Revolutionizing Telecom](#)

How can telecom providers maintain network reliability while achieving sustainability goals? The emerging base station energy storage hybrid solutions might hold the answer, blending lithium ...



[Energy-efficiency schemes for base stations in 5G ...](#)

Jul 27, 2023 · Abstract In today's 5G era, the energy efficiency (EE) of cellular base stations is crucial for sustainable communication.



Recognizing this, Mobile Network Operators are ...

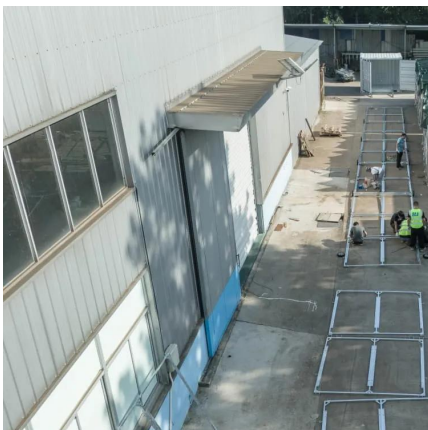


[ANALYSIS OF ENERGY AND COST SAVINGS IN HYBRID BASE STATIONS](#)

Energy storage batteries for wind power base stations Batteries allow excess energy generated by wind to be stored for use when there is no wind. There are several types of batteries used ...

[Power Base Stations Hybrid Power: The Future of Sustainable](#)

Why Are Traditional Power Systems Failing Mobile Networks? As global mobile data traffic surges 35% annually (GSMA 2023), conventional grid-powered base stations struggle with reliability. ...



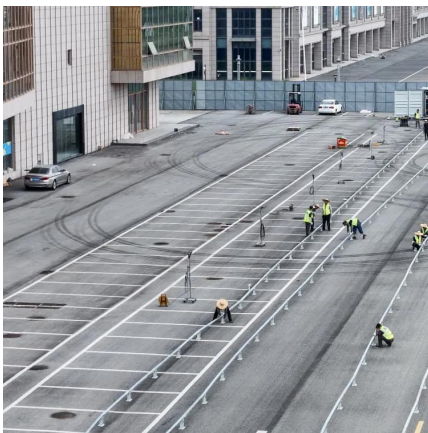
Energy Provision Management in Hybrid AC/DC Microgrid Connected Base

Oct 6, 2023 · One of the most concerning issues in 5G cellular networks is managing the power consumption in the base station (BS). To manage the power consumption in BS, we proposed ...



[The Role of Hybrid Energy Systems in ...](#)

Sep 13, 2024 · In summary, powering telecom base stations with hybrid energy systems is a cost-effective, reliable, and sustainable solution. By ...



The Role of Hybrid Energy Systems in Powering Telecom Base Stations

Sep 13, 2024 · In summary, powering telecom base stations with hybrid energy systems is a cost-effective, reliable, and sustainable solution. By integrating renewable sources such as solar ...

Reliability and Economic Assessment of Integrated Distributed Hybrid

Jul 11, 2025 · Reliable telecommunication tower operation is paramount for sustainable cities as it ensures uninterrupted communication, supports economic growth, facilitates smart city ...



[Analysis of Energy and Cost Savings in Hybrid Base ...](#)

Sep 9, 2025 · In 3G and LTE cellular networks, Radio Access Network (RAN) consumes the major part of energy with the base station (BS) using 75-80 % of the network's energy [4]. ...



Contact Us

For technical specifications, project proposals, or partnership inquiries, please visit:
<https://www.eiei.pl>

Scan QR Code for More Information



<https://www.eiei.pl>