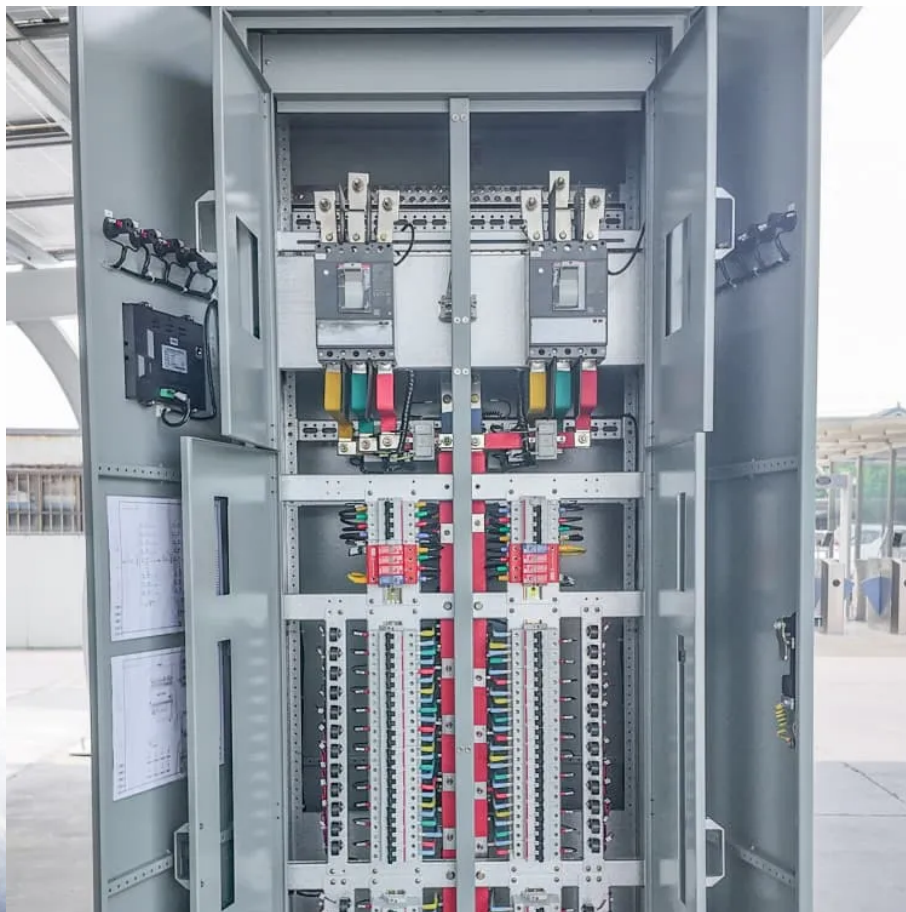


# **Huawei solar container communication station Supercapacitor Research Institute**





## Overview

---

What is Huawei ids1000c series container data center solution?

Huawei IDS1000C series container data center solution includes independent IT, power and cooling containers for standard configuration. Meanwhile, control container and 20ft-power container are optional.

Where is the Huawei Research Center located?

The \$1.4 billion center, located 30 miles west-southwest of central Shanghai, consolidates Huawei's research and development efforts across multiple areas, including HiSilicon, 5G-A/6G wireless technologies, smartphones, automobiles, and digital energy research.

How big is Huawei R&D Center in Shanghai?

The new Huawei R&D Center in Shanghai is named 'Lianqui Lake'. It covers 2600 acres which is larger than the Apple Park and Microsoft's Redmond Campus, combined. It has over 40000 offices which can give room to 35000 employees. Next interesting segment of this center is over 100 cafes.

What is Huawei ids1000a all-in-one container data center?

Huawei IDS1000A All-in-one container data center is a one stop infrastructure solution integrating power, cooling, cabinet, fire-control, cabling, monitoring, grounding and lightning system. It two standard products includes 40ft and 20ft. Above configuration can be partially customized according to customer needs.



## Huawei solar container communication station Supercapacitor Rese

---

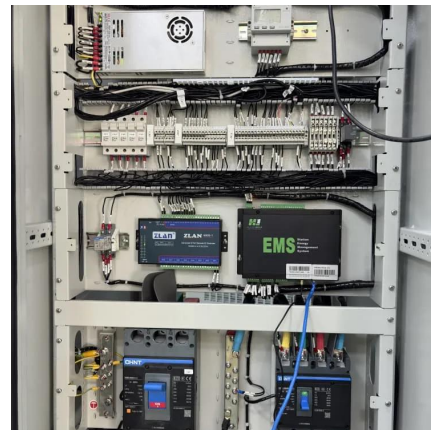


### [Huawei opens \\$1.4 billion R& D Center at Shanghai amid ...](#)

Jul 16, 2024 · Huawei has developed the largest R& D Center in Shanghai worth \$1.4 billion. The company constructed the new base amid a growing chip war between U.S. and China.

### [Huawei Finishing Largest Research and Develop Center in ...](#)

Jun 27, 2025 · Huawei's Lianqiuhu R& D Center, a major investment project in Shanghai's Qingpu District, has been officially completed, marking an important step forward for the world's ...



### [Huawei IDS1000 Container Data Center Solution](#)

Aug 31, 2012 · To solve the troubles, Huawei launched CloudPower IDS1000 container data center, which highly integrated power supply and distribution system, environmental ...



### [Huawei officially opens its 2.600-acre R& D ...](#)

Jul 14, 2024 · The Huawei Lianqiu Lake R& D Center opened early July 2024 to host over 35,000 Huawei scientists, engineers, and other personnel.



[Huawei's Shanghai research base leads AI and ...](#)

Jun 25, 2025 · Huawei's ambitious Shanghai research center drives innovation in technology and talent cultivation in the Chinese landscape.



[Huawei opens \\$1.4 billion R& D Center at ...](#)

Jul 16, 2024 · Huawei has developed the largest R& D Center in Shanghai worth \$1.4 billion. The company constructed the new base amid a ...



[Huawei unveils massive 2,600-acre R& D ...](#)

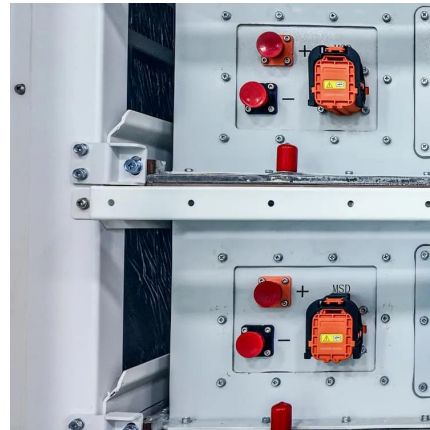
Jul 15, 2024 · The \$1.4 billion center, located 30 miles west-southwest of central Shanghai, consolidates Huawei's research and development ...





[Huawei Finishing Largest Research and ...](#)

Jun 27, 2025 · Huawei's Lianqiuhu R& D Center, a major investment project in Shanghai's Qingpu District, has been officially completed, marking an ...



[Huawei officially opens its 2,600-acre R& D center in ...](#)

Jul 14, 2024 · The Huawei Lianqiu Lake R& D Center opened early July 2024 to host over 35,000 Huawei scientists, engineers, and other personnel.



**Supercapacitors: A promising solution for sustainable energy ...**

Apr 1, 2025 · By focusing on these key research areas, the future of supercapacitor technology promises to deliver high-performance, sustainable, and cost-effective energy storage solutions ...



[Energy Storage Solution \(ESS\) , HUAWEI...](#)

Cell to Grid Safety Huawei's Smart String Grid-Forming ESS ensures robust protection through five layers of integrated safety design, from individual ...



### [Energy Storage Solution \(ESS\) , HUAWEI Smart PV Global](#)

Cell to Grid Safety Huawei's Smart String Grid-Forming ESS ensures robust protection through five layers of integrated safety design, from individual cells, battery packs, racks, systems, and ...

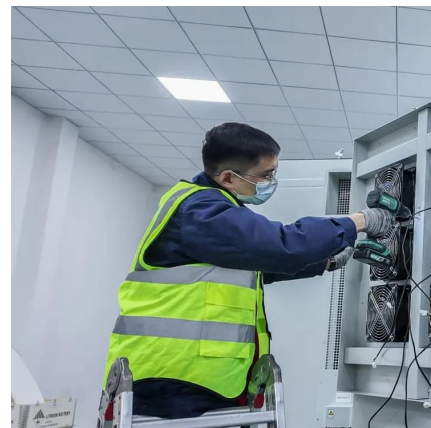


### [New substation to power Huawei's flagship R& D center in ...](#)

Dec 10, 2024 · The Lyuzhou Substation is equipped with 220-kilovolt underground cables directly connected to the user substations at Huawei's Lianqiu Lake Research Center. It ensures a ...

### [A review of supercapacitors: Materials, technology, ...](#)

Aug 15, 2024 · This review study comprehensively analyses supercapacitors, their constituent materials, technological advancements, challenges, and extensive applications in renewable ...





### **Huawei unveils massive 2,600-acre R& D center in Shanghai ...**

Jul 15, 2024 · The \$1.4 billion center, located 30 miles west-southwest of central Shanghai, consolidates Huawei's research and development efforts across multiple areas, including ...

### [New substation to power Huawei's flagship ...](#)

Dec 10, 2024 · The Lyuzhou Substation is equipped with 220-kilovolt underground cables directly connected to the user substations at ...



## **Contact Us**

---

For technical specifications, project proposals, or partnership inquiries, please visit:  
<https://www.eiei.pl>

**Scan QR Code for More Information**



<https://www.eiei.pl>