

How to reconnect the base station power





Overview

How do I Reset my base station?

To reset your base station, first, locate the reset button next to the ports. Ensure the base station is powered and press the button using a pen or straightened paperclip, holding it for 10 seconds before releasing. To perform a factory reset, unplug the base station from the power source and wait at least 60 seconds.

What should I do if my base stations are not working?

If you continue to face problems with the base stations, check the SteamVR app for any firmware updates or use the "Restart Headset" command to resolve potential tracking or sync issues. Make sure all stations are set up properly by following the prompts during the room setup in SteamVR.

How do I fix a faulty base station?

To resolve issues with a faulty base station, powercycle it by turning it off and then on again. This can help reset any communication failures. In SteamVR, navigate to Settings > Base Station and select "Recover from Incomplete Update". If the issue persists, try moving the base station closer to your link box.

How do I reconnect the handset to my Gigaset base station?

To reconnect the handset to your Gigaset base station, please follow the procedure below: Confirm the item "Register Handset" with "OK". Enter the system PIN (delivery status 0000) and confirm with "OK". Note:



How to reconnect the base station power

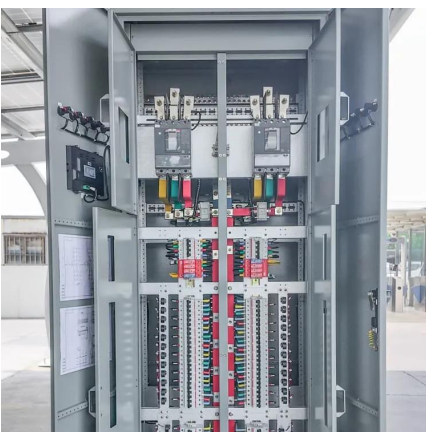
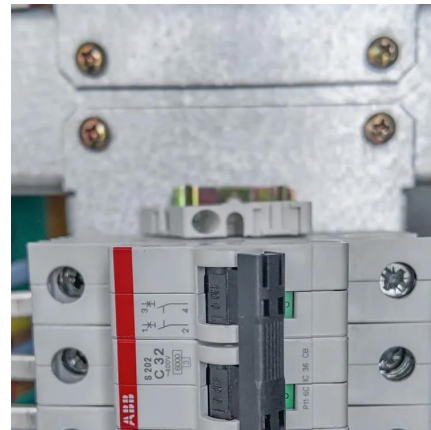


[Say Goodbye to Wyze Connectivity Issues: ...](#)

Dec 4, 2023 · Have you ever experienced trouble with your Wyze Base Station? Maybe you're having connectivity issues or your devices aren't ...

[How To Factory Restore Lighthouse Base Station](#)

Mar 14, 2025 · To perform a factory reset, start by unplugging the power adapter from both the outlet and the base station. While unplugged, press and hold the mode button, then plug in the ...



[5.3 Power the Base Station. ASCOM IPBS, IPBL](#)

This manual provides installation, operation, and maintenance instructions for the Ascom IP-DECT Base Station IPBS and IP-DECT Gateway IPBL. Learn how to configure the system, ...

[Do You Have to Resynch Arlo Cameras After Power Outage ...](#)

9 hours ago · No, you typically don't have to resynch Arlo cameras after a power outage --most models automatically reconnect to the base station or Wi-Fi once power and internet are ...



[Factory resetting a Yealink W52P/W60P](#)

Factory resetting a Yealink cordless phone is a simple procedure but must be carried out at the base station: Power off the unit - if powered by PoE this might mean unplugging the network ...



[Yealink Cordless Handsets: How to Perform a Base Restart](#)

Jun 4, 2024 · Enter the system PIN (default: 0000 or 9871). Press the Done soft key. After the above steps, the registration LED and network status LED go out simultaneously. After a ...



[SimpliSafe Base Station Not Connecting To WIFI](#)

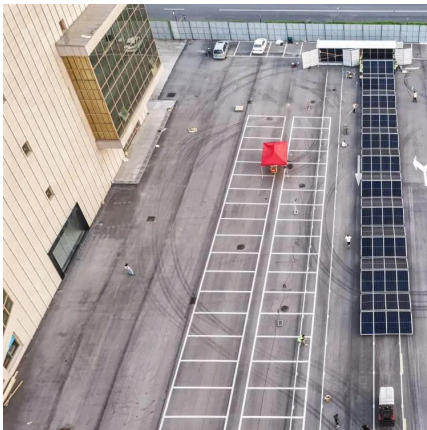
Apr 1, 2023 · To fix the connection issue, power cycle or reset the base station and reconnect. Connecting your SS system to your Wi-Fi network ...





[Service-Portal, Gigaset](#)

Please also disconnect the power supply of the base and the router from the mains for 10 seconds. This procedure restarts the software in the handset and in the base. However, no ...



[My Arlo SmartHub or Base Station is offline; how can I ...](#)

Make sure your Ethernet and power cables are securely connected to the back of the Arlo SmartHub or Arlo Base Station. Unplug the power adapter from the wall outlet, wait 30 ...

[How To Reset Arlo Base Station \(The SIMPLE ...\)](#)

Aug 10, 2024 · How To Reset Arlo Base Station Remotely Assuming your base station has power and is online, it should be possible to reset it ...



[How to Reset Ring Alarm Base Station](#)

Jun 5, 2023 · After a power loss, your Ring Alarm Base Station may not automatically reconnect to the home network, even if all other devices do.

...



[How to connect arlo base?](#)

Apr 16, 2025 · After you plug your base station into a power outlet, press the power button to turn it on. - For a SmartHub or base station with one LED, power it on until the LED is solid blue.



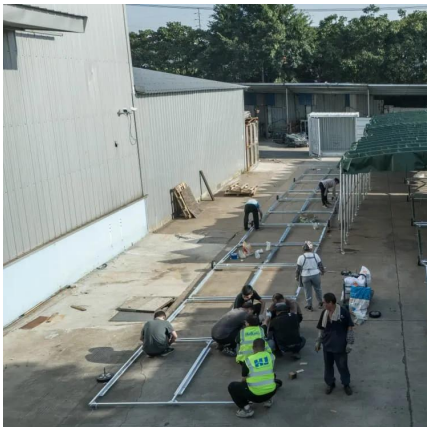
Why does my DECT handset say that the base unit has no power?

If your Panasonic cordless (DECT) handset shows the message "No base power" or a similar alert, it means the handset is not able to detect a powered base unit. This does not usually ...

[How to Repair your Base Station Internal](#)

...

Feb 17, 2018 · How to repair a broken Apple Airport Base Station or Lucent Access Point. Failures occur due to bad capacitor choices and overheating.



[How to Repair your Base Station Internal Power Supply](#)

Feb 17, 2018 · How to repair a broken Apple Airport Base Station or Lucent Access Point. Failures occur due to bad capacitor choices and overheating.



[How Do I Reset My Ring Base Station Wi-Fi?](#)

Mar 16, 2023 · Even the smartest home devices aren't infallible, and you may spend some time scratching your head over a failed connection to your ...



How to power cycle a Grandstream DP750 Cordless Base Station

After a few minutes, the Grandstream DP750 should reconnect to your network and resume normal operation. You can check that the devices connected to the base station, such as ...

[How to Reset Arlo Base Station , Step by Step ...](#)

Feb 25, 2022 · Once the base station has finished resetting, you'll need to reconnect it to your modem and router. After that, you can reconnect your ...



[Wyze Base Station Setup](#)

Jan 24, 2023 · In case of trouble, power cycle the base station and attempt the process again. To power cycle, unplug the device, wait for 20 - 30 ...



Contact Us

For technical specifications, project proposals, or partnership inquiries, please visit:
<https://www.eiei.pl>

Scan QR Code for More Information



<https://www.eiei.pl>