

# How to install the base station power access





## Overview

---

How do you install a base station?

(Desktop Installation) Attach and remove the base stand. Align the snap-fits with the corresponding holes and push forward, snapping them into the holes. Remove the snap-fits from the holes horizontally. 2b. (Wall-Mount Installation) Attach the base station.

How do I connect a base station to a network?

1. Connect the base station power and the network using method a or method b. a. AC Power Option b. PoE (Power over Ethernet) Option If you choose method a, use Yealink supplied power adapter (5V/0.6A). A third-party power adapter may damage the base station. If you choose method b, you do not need to connect the power adapter.

How do I check if a base station is connected to IBSS?

Check the base station details to ensure that the base radio is indicating it is connected to IBSS through an SNM941 Connected Site Gateway. Your base station is now up and running. Log into to check the status. Equipment: Procedure: Insert the SIM card into the SNM940 modem, if required, and then reseal the unit.

What is a managed base station?

Trimble recommends that base stations that are connecting from a portable, daily-use setup are treated as unmanaged base stations and those used for permanent or semi-permanent setups where the receiver will be in the same place for a longer period of time are treated as managed base stations.



## How to install the base station power access

---



### [Install the Base Station](#)

Requirements for a mounting place flat surface; above ground; with open sky view; away from the sources of electromagnetic radiation (generators, power lines, etc.); far away from large metal ...

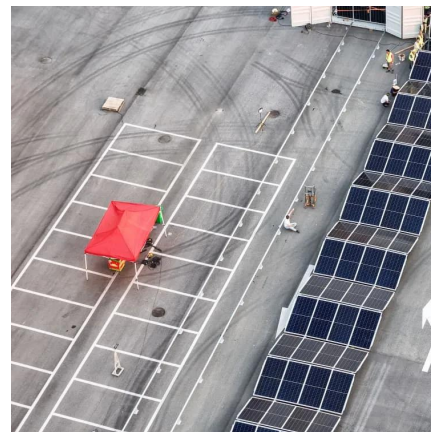


### [Baicells mBS1105 Base Station Installation Guide](#)

Aug 18, 2025 · Baicells mBS1105 is a high performance outdoor 3.65GHz micro base station based on TD-LTE technology, which is developed by Baicells. The mBS1105 supports wired ...

### [Common ways to set up a base station](#)

Dec 1, 2025 · On the largest jobsites, and on those that remain operational for the longest time, a permanent or semi-permanent installation is a popular solution. A receiver is typically used as ...



### [Base station Installation Instructions](#)

Feb 20, 2025 · Keep the base station away from 802.11g Wi-Fi devices, 2.4 GHz peripherals, Bluetooth devices, cordless phones, transformers, motors, flu-orescent lamps, microwaves, ...



### [Gateway and Base Station Installation Guide](#)

Aug 11, 2018 · Installation Planning IMPORTANT: This document provides guidelines for the proper placement and installation of Gateways, Base Stations, and the antennas. Failure to ...



### [Nova-246 Outdoor Base Station](#)

Nov 28, 2025 · 1.1 Introduction Baicells Nova-246 is a type of high performance outdoor macro base station based on LTE technology, which offers multiple models to support different TDD ...



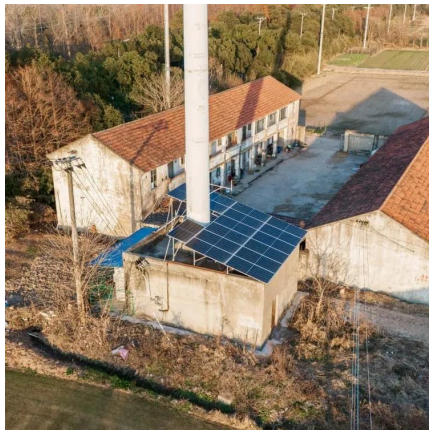
### [Base Station Quick Start Guide](#)

May 27, 2019 · Get the Arlo app Download the free Arlo app to install your base station and camera. This app provides step-by-step instructions.



## [DECT IP Base Station W70B](#)

Dec 17, 2023 · Assembling the DECT IP Station 1. Connect the base station power and the network using method a or method b.

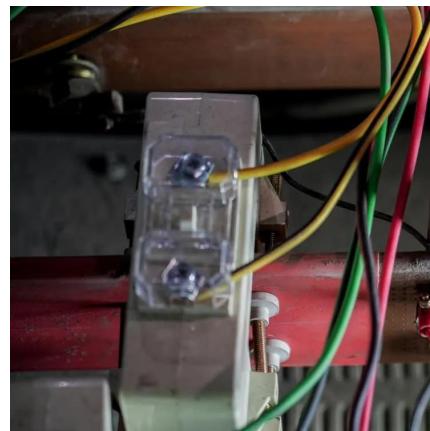


## [Figure 5-4 Power Adaptor Input and Output. Baicells Nova R9](#)

This installation guide provides instructions for the hardware installation of the BaiCells Nova R9 3.5GHz 1W base station. It covers topics like out-of-box audit, installation preparation, base ...

## [Nova-243 Outdoor LTE TDD Base Station](#)

Oct 25, 2025 · 1. Product Overview 1.1 Introduction Baicells Nova-243 is high performance outdoor micro base station based on LTE TDD technology, which is developed by Baicells. ...



## Contact Us

---

For technical specifications, project proposals, or partnership inquiries, please visit:  
<https://www.eiei.pl>



## Scan QR Code for More Information



<https://www.eiei.pl>