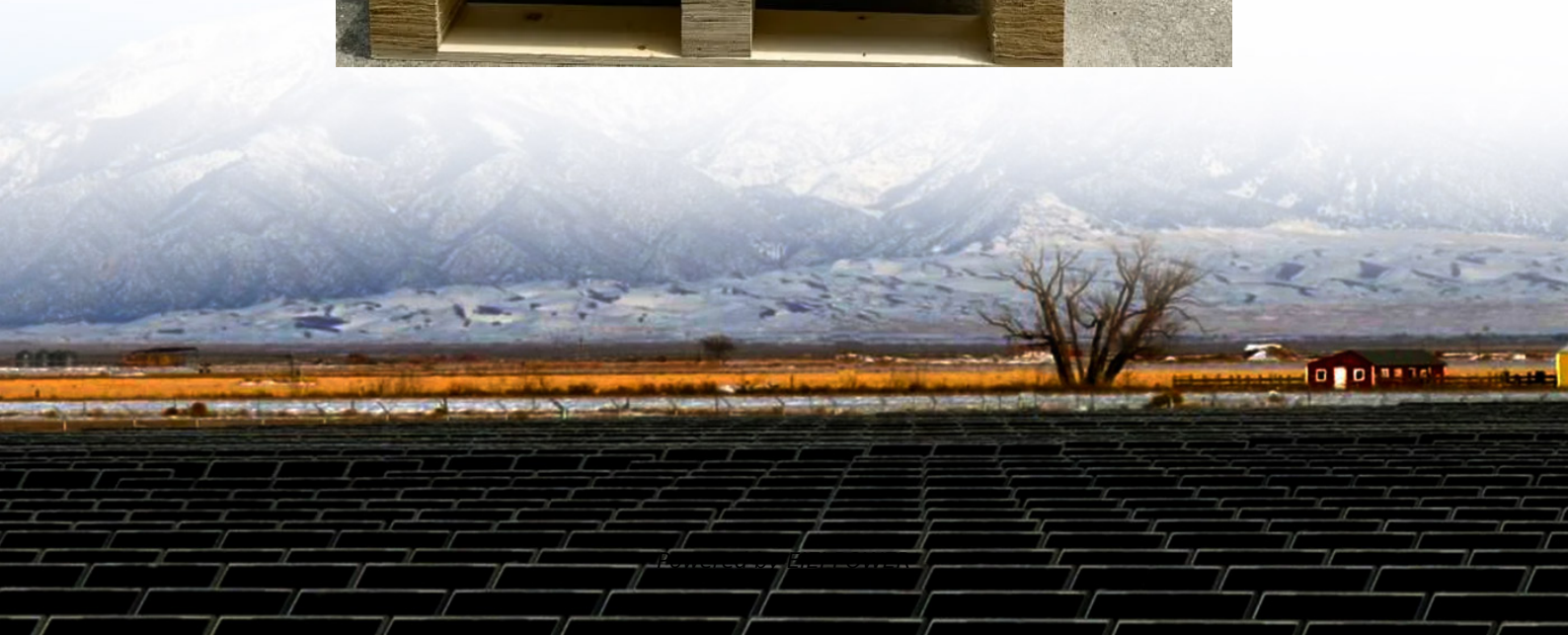


# How to install a communication tower base station





## Overview

---

How do I set up a base station?

Set up the base station using either the tripod or T-bar mounting method. You must use an external radio antenna kit for the internal 450 MHz or 900 MHz radio. To avoid interference between the 900 MHz radio and GPRS transmissions, do not mount the external radio antenna within 1 m (3.3 ft) of the GSM antenna.

Where should a base station be installed?

The location is the actual environment in which the base station will be installed. Typically, this means outside in an open sky environment (e.g. on the roof of a building or in an empty field). Figure 2 shows a typical fixed installation of several antennas, including a VeraChoke and a VeraPhase 6000, on a roof.

How do I install a tower base?

1 Find a suitable location to install the base. An ideal location has:

- Enough flat land to allow for pre-assembly of the tower horizontally on the ground.
- No overhead wires or obstacles that would prevent it from being rotated into its final, upright position.

2 Dig an appropriate sized hole according to the "base footings" table.

What is a communication base station?

In the vast telecommunications network, communication base stations play a frontline role. Positioned closest to end users, they serve as gateways for processing customer requests and managing data flow. In the words of "Interesting Communication Engineering Drawings," these stations act like "business trackers," always vigilant to:



## How to install a communication tower base station

---

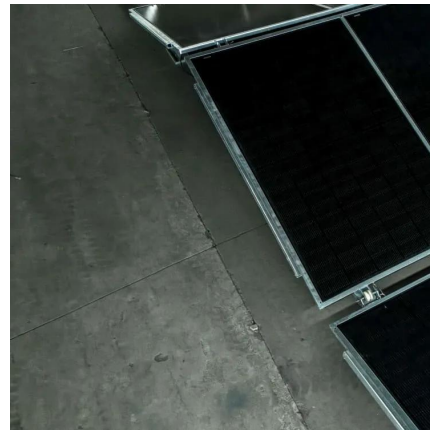


### [Construction of Cell Site , SIX Construction](#)

A cell site, also known as a cell tower or base station, is a structure that hosts the equipment necessary for cellular communication. It's a critical component of a cellular network, providing ...

### [Common ways to set up a base station](#)

Dec 1, 2025 · When a base station device connects to IBSS, the base station name is checked against existing managed and unmanaged base stations. If a base station already exists within ...



### [How to Install Universal Antenna Towers](#)

2 days ago · Universal Antenna Towers Are Easy To Install Do it yourself or hire a local contractor  
Base Section: 1 Find a suitable location to install the base. An ideal location has: o ...

### [What To Know Before Installing a Communication Tower](#)

Jul 17, 2025 · Communication towers are great for bringing reliable internet and cellular service to rural areas. However, there's a lot that can impact every step of the project, starting with the ...



### Complete Guide to 5G Base Station Construction , Key Steps, ...

Nov 17, 2024 · Explore how 5G base stations are built--from site planning and cabinet installation to power systems and cooling solutions. Learn the essential components, technologies, and ...



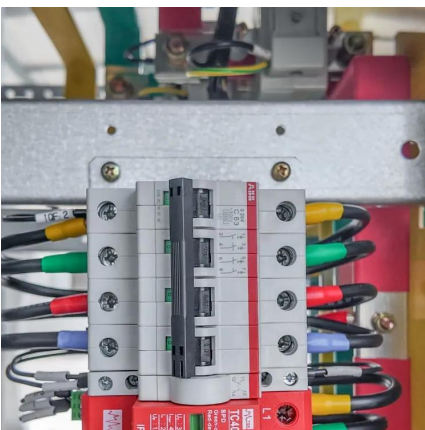
### [Process of Installing a Base Transceiver Station \(BTS\)](#)

Dec 12, 2024 · Installing a Base Transceiver Station (BTS) is a critical step in building mobile communication networks. Here's a step-by-step guide to the process: 1.



### [Planning, Constructing, and Commissioning a Mobile ...](#)

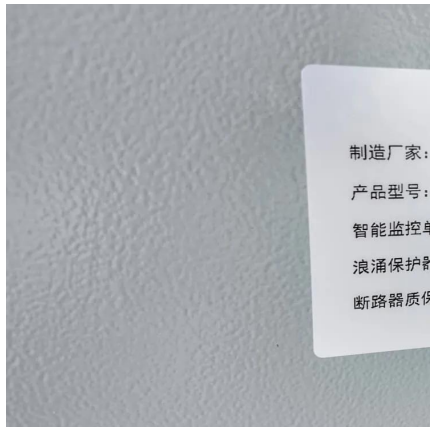
3 days ago · Cable Installation: Install coaxial, fiber optic, and power cables to connect antennas, base stations, and other equipment. Ensure proper cable management and secure all cabling ...





### [How to Install Universal Antenna Towers](#)

2 days ago · Universal Antenna Towers Are Easy To Install Do it yourself or hire a local contractor  
Base Section: 1 Find a suitable location to install  
...



### [Process of Installing a Base Transceiver ...](#)

Dec 12, 2024 · Installing a Base Transceiver Station (BTS) is a critical step in building mobile communication networks. Here's a step-by-step guide to ...

### [Communication Tower Installation and Commissioning ...](#)

This article is about Communication Tower Installation and Commissioning of OSP Telecom Distribution System as per International Codes and standards.



### [Gateway and Base Station Installation Guide](#)

Aug 11, 2018 · Installation Planning IMPORTANT: This document provides guidelines for the proper placement and installation of Gateways, Base Stations, and the antennas. Failure to ...



### [What To Know Before Installing a ...](#)

Jul 17, 2025 · Communication towers are great for bringing reliable internet and cellular service to rural areas. However, there's a lot that can impact ...



### [How to set up a base station](#)

This is the first of a series of articles dealing with how to correctly set up a base station. In this article, we give a brief introduction and explain the most important concepts.

### [Planning, Constructing, and Commissioning a ...](#)

3 days ago · Cable Installation: Install coaxial, fiber optic, and power cables to connect antennas, base stations, and other equipment. Ensure proper ...



### [How to set up a base station](#)

This is the first of a series of articles dealing with how to correctly set up a base station. In this article, we give a brief introduction and explain the ...



## Contact Us

---

For technical specifications, project proposals, or partnership inquiries, please visit:  
<https://www.eiei.pl>

### Scan QR Code for More Information



<https://www.eiei.pl>