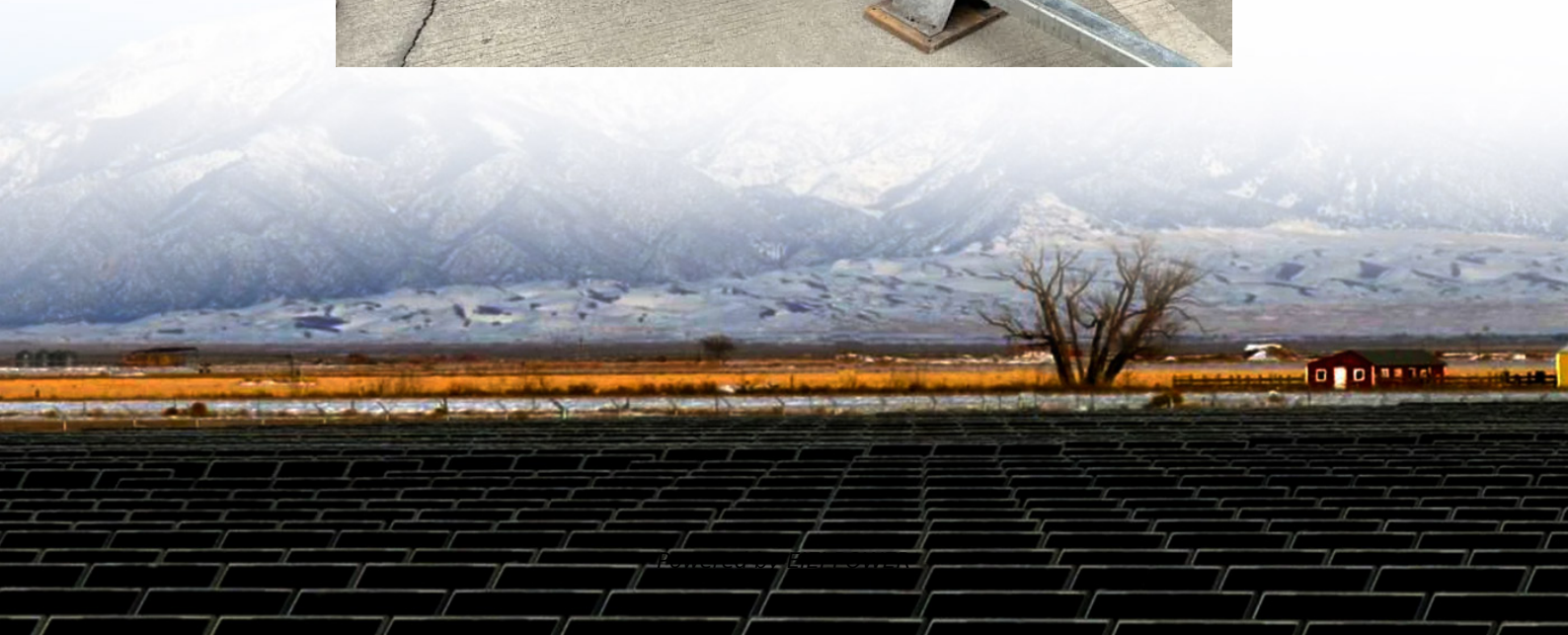


How to connect the 380V battery cabinet





Overview

How do you install a classic Battery Cabinet?

Position the Empty Classic Battery Cabinet. Mechanical installation. Follow one of the procedures: Mechanical Installation for Bottom Cable Entry. Mechanical Installation for Top Cable Entry. Mechanical Installation for Bottom Cable Entry. Mechanical Installation for Top Cable Entry. Connect the Signal Cables. Connect the Power Cables from the UPS.

How do I connect a battery cabinet to a power system?

Procedure 1. Furnished with the battery cabinet are battery disconnect circuit breaker alarm lead assemblies. Refer to the power system installation manual to use these alarm leads to connect the battery cabinet battery disconnect circuit breaker alarm into the power system alarm circuits.

How do I install a VDC battery cabinet?

Set first battery in cabinet and attach the long lead (fast-on connector side marked positive) from the cabinet to the fast-on terminal on the positive terminal of the battery. See Figure 24. Facing left Facing right Facing left Vertiv™ NetSure™ 211 SERIES -48 VDC Battery Cabinet Installation & User Manual (Section 6023) Rev. L 23 Figure 24:.

How to install UPS & battery cabinet?

1. Installation sequence is as follows: 1.1 First, determine the installation location of the UPS and battery cabinet upon arrival at the site. 1.2. Install the battery connection Wires.



How to connect the 380V battery cabinet



[Liebert® EXS External Battery Cabinet Installer/User Guide](#)

Jan 31, 2024 · This manual contains important instructions that should be followed during installation of your Vertiv™ Liebert® EXS Battery Cabinet and accessories. Read this manual ...

[Install and Connect the Batteries](#)

Place the batteries on the shelves in the empty classic battery cabinet and interconnect the batteries. NOTE: Do not cover the holes in the shelf corners that are intended for cable routing ...



[How to wire ups battery?_UPS Power System Manufacturer ...](#)

(3) The outgoing battery power cord can be made into a plug to connect to the ups host, and other sockets can be made on the ups host. (4) The host input will have two forms, one is mains ...

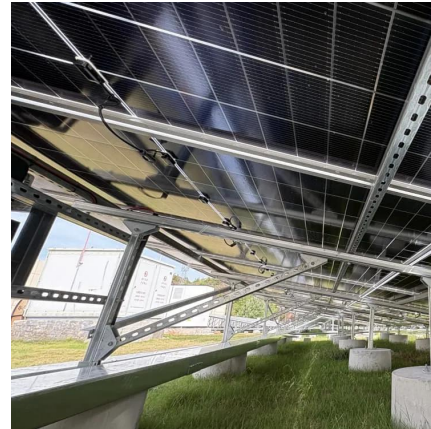


[-48 VDC Battery Cabinet Installation and User Manual ...](#)

Apr 21, 2022 · Connect the power system's battery cable terminated in an Anderson connector to the first battery cabinet's battery cable terminated in a mating Anderson

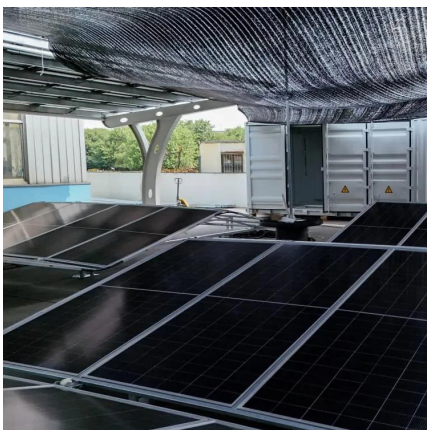


connector.



UBC80 Battery Cabinet Installation, Operation.

Feb 3, 2025 · Connects the battery cabinet to the UPS Automatically locks the battery cabinet door to prevent access to the cabinet interior during its operation as a power backup to the UPS.



Connect the Power Cables

Connect the battery cables (N, Batt+, Batt-) from the batteries in the second classic battery cabinet to the right side of the battery breaker in the first classic battery cabinet.



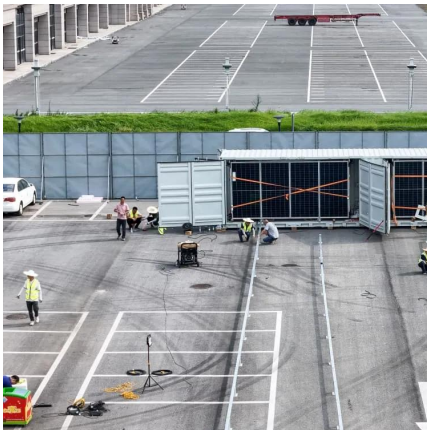
Installation Procedure

Remove the Empty Classic Battery Cabinet from the Pallet. Position the Empty Classic Battery Cabinet. Mechanical installation. Follow one of the procedures: Mechanical Installation for ...



Battery Cabinet Cable Connection Quick Guide

Nov 12, 2018 · C:02114914,02114916,02114917,02114923,02114918,02114919,02114920,02114922,02114710,02114711,02114712,02114713,02114718,02114719,02114720;M:FR42611W,FR426135W,FR42612W



How to do UPS Battery Wiring?

1 day ago · F. Before connecting the battery cables from the battery cabinet to the host, measure the battery voltage with a multimeter, which should be 103.36V, and check if the positive and ...

SL-25657_REV3_01-21

Feb 27, 2020 · Refer to the illustration, "Cabling 3U Cabinets in Parallel," above, and connect the UPS-to-battery cable to Connectors A on each battery cabinet in the battery string.



Contact Us

For technical specifications, project proposals, or partnership inquiries, please visit:
<https://www.eiei.pl>



Scan QR Code for More Information



<https://www.eiei.pl>