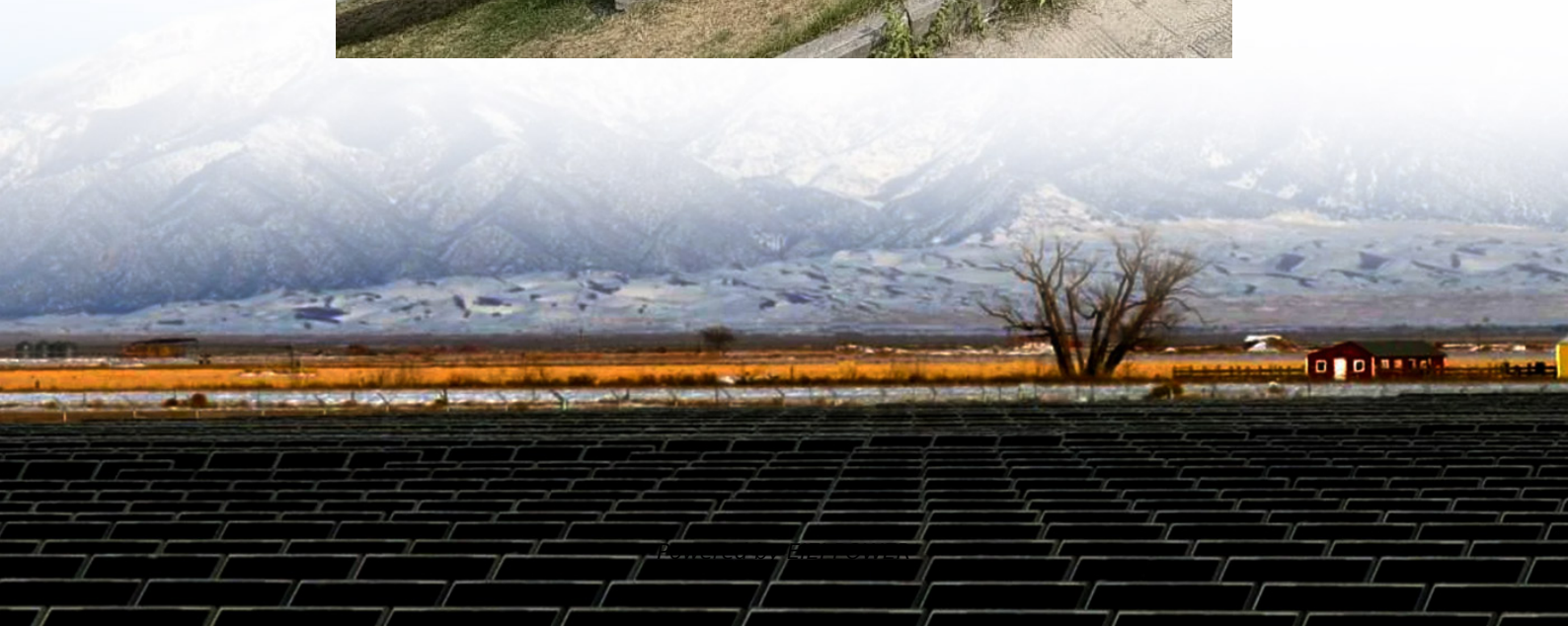


# **How to check the charging current of the battery cabinet**





## Overview

---

How do I check battery charging?

For checking battery charging, we are primarily interested in measuring voltage and, to a lesser extent, current. Understanding how to use a multimeter safely and accurately is paramount. Voltage: Voltage is the electrical potential difference between two points.

How do I know if my battery is not charging?

Reading the Current: Observe the current reading on the multimeter. The charging current should be within the specified range for the battery and charging system. A very low or zero current reading indicates that the battery is not charging, while a very high current reading may indicate a short circuit or other problem.

How should a battery be charged?

Battery experts recommend these practices: Partial Charging Cycles: Charging between 20-80% creates less stress than full cycles. For long-term storage, maintain 50% charge. Temperature Management: Never charge when device feels hot. Remove cases during charging and avoid direct sunlight.

How do you charge a battery with a multimeter?

Connect the red lead of the multimeter to the disconnected terminal and the black lead to the battery post. This will place the multimeter in series with the charging circuit. Reading the Current: Observe the current reading on the multimeter. The charging current should be within the specified range for the battery and charging system.



## How to check the charging current of the battery cabinet



### How To Check If Battery Is Charging With Multimeter? Quick ...

Jun 23, 2025 · A multimeter, a versatile electronic measuring instrument, is the key tool for diagnosing these charging problems. It allows you to measure voltage, current, and ...

### current

Jul 2, 2024 · My questions are: Will I read battery voltage/charger voltage/intermediate voltage between 15V and 12V. How do we get the exact battery state during charging to show the ...



### [Battery Charger & Battery Bank](#)

Apr 26, 2025 · Comprehensive daily maintenance checklist for battery charger and battery bank systems. Learn key inspection steps, fault detection, & safety tips to ensure reliable power

...

### [Understanding Battery Current: How It Works. Measurement ...](#)

Mar 29, 2025 · Understanding battery current is important to optimize battery performance, ensure safe operation, and prevent damage from improper use. If you want to extend the life of your ...

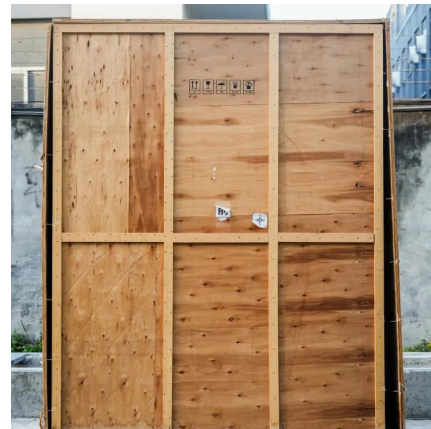


### [How to Find the Charging Current of a Battery](#)

Jul 13, 2025 · Learn how to find the charging current of a battery which can be used to estimate the charging current of a battery.

### **When using the MAX17205, how do we determine if the battery is charging**

You can check the magnitude of the current on the current-sense resistor (i.e., register 6C:0A, or 00A) to determine if the battery is charging or discharging: When the value is larger than a ...



### **How to Monitor Battery Charger Amps for Safe and Effective Charging**

Sep 4, 2025 · A battery charger amp meter measures the current flowing from the charger into the battery. You rely on this reading to monitor the state of charge and ensure safe, effective ...



### [Simplify Voltage and Current Measurement in Battery ...](#)

Dec 23, 2023 · Amplifier Usage in Battery Test Equipment In typical systems, a Buck converter is used as the power source for battery charging and a Boost converter is used for battery ...



### [Battery Charger & Battery Bank](#)

Apr 26, 2025 · Comprehensive daily maintenance checklist for battery charger and battery bank systems. Learn key inspection steps, fault ...

### [Understanding Battery Current: How It Works, ...](#)

Mar 29, 2025 · Understanding battery current is important to optimize battery performance, ensure safe operation, and prevent damage from improper ...



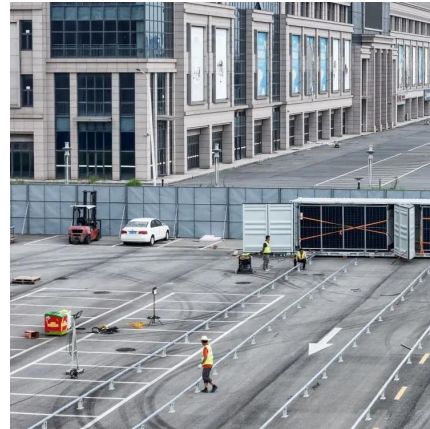
### [How to Check if Your Battery Is Actually Charging](#)

Aug 12, 2025 · How to Check if Your Battery Is Actually Charging Determining whether your device is charging seems simple, but several factors can obscure the truth. A plugged-in cable ...



### [How to Calculate Battery Charging Time and ...](#)

2 days ago · Simple Battery Charging Time and Current Formula for Batteries (with 120Ah Battery Example) In this simple tutorial, we will explain how to ...



### [How to Calculate Battery Charging Time and Current?](#)

2 days ago · Simple Battery Charging Time and Current Formula for Batteries (with 120Ah Battery Example) In this simple tutorial, we will explain how to determine the appropriate battery ...

### **How to Monitor Battery Charger Amps for Safe and Effective Charging**

Sep 4, 2025 · A battery charger amp meter measures the current flowing from the charger into the battery. You rely on this ...



## **Contact Us**

---

For technical specifications, project proposals, or partnership inquiries, please visit:  
<https://www.eiei.pl>



## Scan QR Code for More Information



<https://www.eiei.pl>