

How to check the battery level of base station battery pack





Overview

How do I choose a base station?

Key Factors: **Power Consumption:** Determine the base station's load (in watts). **Backup Duration:** Identify the required backup time (hours). **Battery Voltage:** Select the correct voltage based on system design. **Efficiency & Discharge Rate:** Consider battery efficiency and discharge characteristics.

How do you test a battery pack?

Here's how to conduct a simple capacity test: Fully charge the battery pack first. Disconnect the pack from the charger and begin discharging each cell one by one. Use a small resistor, light bulb, or a battery discharger to draw power from the cell. Monitor how long each cell takes to discharge to a specific voltage (e.g., 3.0V).

What makes a telecom battery pack compatible with a base station?

Compatibility and Installation Voltage Compatibility: 48V is the standard voltage for telecom base stations, so the battery pack's output voltage must align with base station equipment requirements. **Modular Design:** A modular structure simplifies installation, maintenance, and scalability.

Which battery is best for telecom base station backup power?

Among various battery technologies, Lithium Iron Phosphate (LiFePO₄) batteries stand out as the ideal choice for telecom base station backup power due to their high safety, long lifespan, and excellent thermal stability.



How to check the battery level of base station battery pack



Checking the remaining battery charge , Bose QuietComfort ...

Learn how to check the battery level of your Bose QuietComfort Headphones using product lights or the Bose app.

[Overview of Telecom Base Station Batteries](#)

Definition Telecom base station battery is a kind of energy storage equipment dedicatedly designed to provide backup power for telecom base stations, ...



[How to Check the Battery on Your AirPods: Easy Guide + Tips](#)

Jul 23, 2025 · Want to know how much battery power is left in your AirPods or AirPods Pro? It's incredibly easy to see your battery levels when your AirPods are paired to your iPhone, iPad, or Mac. Here's how to check the battery on your AirPods and maintain its battery life.

[Battery monitoring and maintenance guidelines](#)

Nov 21, 2010 · Backup system reliability Battery monitoring has become a very popular topic, and many companies have either purchased equipment or are in the process of evaluating these ...



[Battery monitoring and maintenance guidelines](#)

Backup System Reliability Introduction Cost Savings Reducing Maintenance time? Safety Why Batteries Fail? Battery System Maintenance Requirements The time required to maintain the batteries in a typical small UPS battery cabinet, small telephone office, or power company substation, in accordance with IEEE standards, is at least 25 hours a year. Most of these hours can be saved by using a monitor, and the hours saved will pay for a top of the line battery monitor in two to four years. See more on electrical-engineering-portal forum electrical

Battery Charger & Battery Bank - Daily ...

Apr 26, 2025 · Comprehensive daily maintenance checklist for battery charger and battery bank systems. Learn key inspection steps, fault ...

[Checking the remaining battery charge](#)

Checking the remaining battery charge Find out how to check the battery level of your product using the product lights or the Bose app, if applicable.





How to Determine the Right Battery Capacity for Telecom Base Stations

Mar 10, 2025 · Example: If a base station consumes 500W and needs 4 hours of backup at 48V, the required capacity is:
 $500W \times 4h / 48V = 41.67Ah$ Choosing a battery with a slightly higher ...

[Telecom Base Station Backup Power Solution: Design Guide ...](#)

Jun 5, 2025 · Discover the 48V 100Ah LiFePO4 battery pack for telecom base stations: safe, long-lasting, and eco-friendly. Optimize reliability with our design guide.



[How to Check Battery Level of Bluetooth Headphones](#)

Jan 13, 2025 · Before delving into how to check the battery level, it's essential to understand what Bluetooth headphones are and how they function. Bluetooth headphones connect wirelessly to ...

[How to check the battery level of an Electric ...](#)

Dec 1, 2025 · Check the water level (for lead - acid batteries): If your stacker uses lead - acid batteries, you need to check the water level regularly. ...



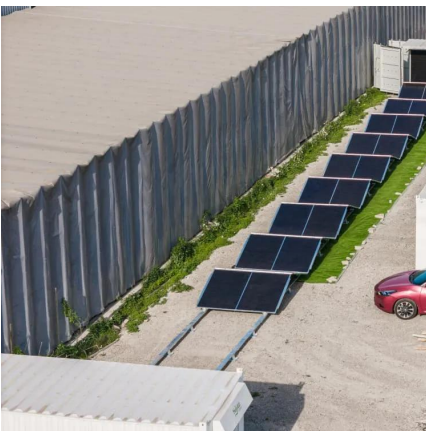


How to Find Bad Cells in a Battery Pack , Signs, Tests & Fixes

Jan 8, 2025 · Learn how to find bad cells in a battery pack using voltage tests, visual checks, and internal resistance methods. Identify dead battery cells safely and accurately.

[How To Check Controller Battery On Pc?](#)

Nov 8, 2023 · With the utilities covered here, you can easily monitor battery life right from your gaming PC. Summary ON Check Controller Battery On ...



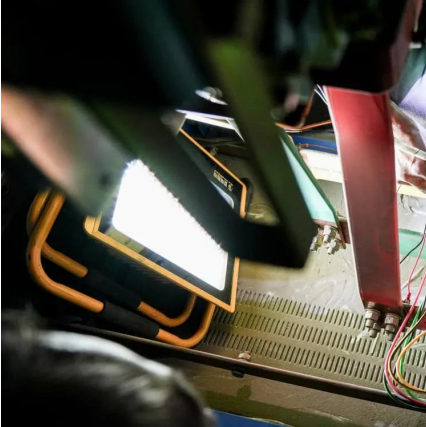
[How to Check Wireless Mouse Battery , 10 ...](#)

Jan 4, 2025 · Ensuring that it is charged or has functional batteries is crucial for maintaining productivity and seamless operation when using a ...

Battery level

Oct 23, 2010 · Battery level - how to check Ask Question Asked 15 years, 1 month ago Modified 15 years, 1 month ago





[Telecom Base Station Backup Power Solution: ...](#)

Jun 5, 2025 · Discover the 48V 100Ah LiFePO4 battery pack for telecom base stations: safe, long-lasting, and eco-friendly. Optimize reliability with ...

Station Battery

Nov 21, 2025 · To build a cascade of batteries (e.g. a stationary battery near solar panels and an APC at base power input), separate networks with transformers. Prefer a tree-like (or star-like) ...

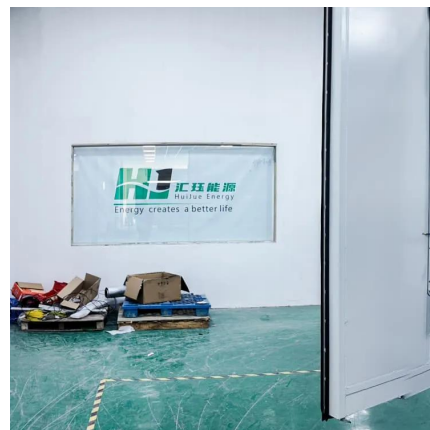


13

May 7, 2025 · LCD Display The following table describes the symbols showing battery and charging status in the top right corner of the display when the Base Station is switched on.

Station Battery

Nov 21, 2025 · To build a cascade of batteries (e.g. a stationary battery near solar panels and an APC at base power input), separate networks with ...





[How To Check Wireless Mouse Battery: Quick ...](#)

May 12, 2025 · The question of how to check your wireless mouse battery is answered in a few ways. You can look for a mouse battery indicator on ...

[How to Determine the Right Battery Capacity ...](#)

Mar 10, 2025 · Example: If a base station consumes 500W and needs 4 hours of backup at 48V, the required capacity is:
 $500W \times 4h / 48V = 41.67Ah$...



[Overview of Telecom Base Station Batteries](#)

Definition Telecom base station battery is a kind of energy storage equipment dedicatedly designed to provide backup power for telecom base stations, applied to supply continuous and ...

[Battery Charger & Battery Bank](#)

Apr 26, 2025 · Comprehensive daily maintenance checklist for battery charger and battery bank systems. Learn key inspection steps, fault detection, & safety tips to ensure reliable power ...





[How to test the battery of base station power supply](#)

Nov 28, 2025 · After the capacity test, the measurement of the time a battery charges up to 100% should be done. Under SOLAS requirements this time should be less than 10 hours. The ...

[Quick and Easy Ways to Check the Battery Level on Your ...](#)

Apr 3, 2025 · To check the battery on your Logitech Bluetooth keyboard, you can use the Logitech Options software on your computer. Once the software is installed, open it and select your ...



[BR-WS-Wall Mounted+Stackable Battery Operation ...](#)

Mar 13, 2025 · BASENGREEN 48V battery pack is equipped with a Bluetooth function, supports APP monitoring battery statuses. All information available in the battery, such as the state of ...

Contact Us

For technical specifications, project proposals, or partnership inquiries, please visit:
<https://www.eiei.pl>



Scan QR Code for More Information



<https://www.eiei.pl>