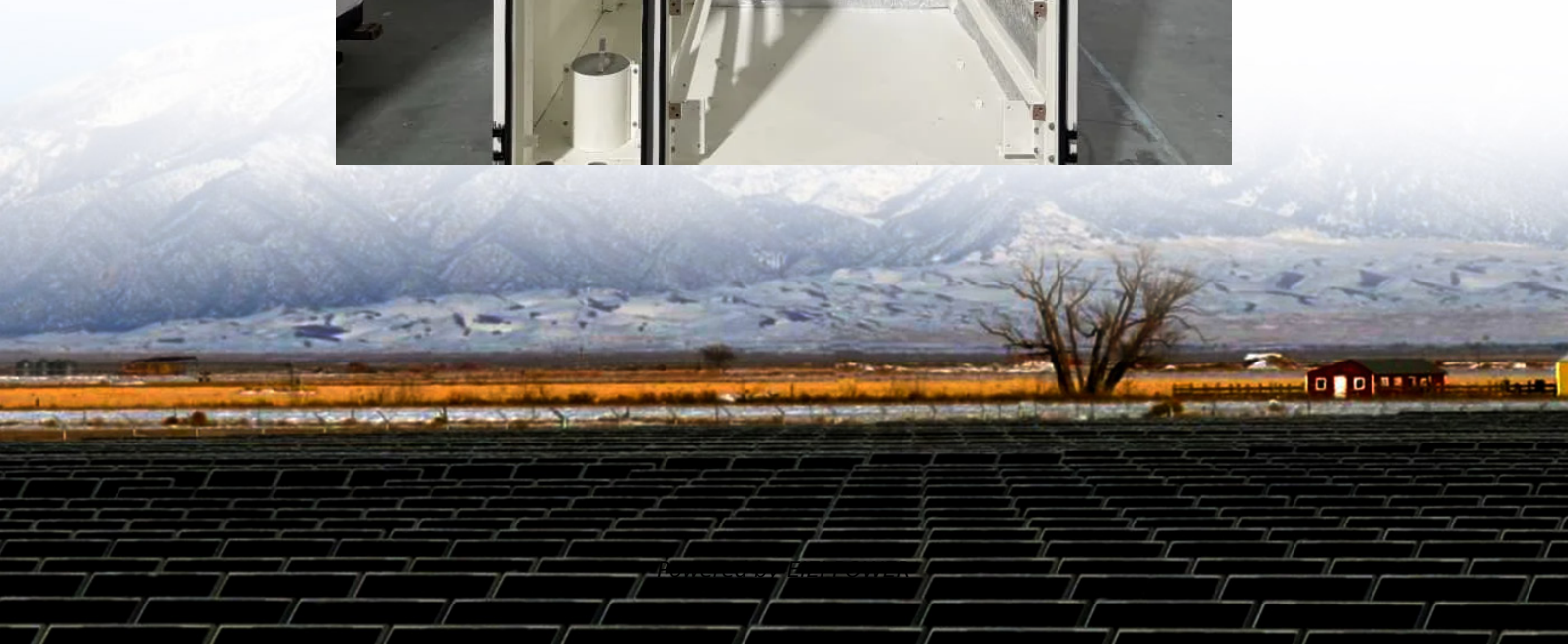


# **How to check if the energy storage cabinet battery is fully charged**





## Overview

---

How to check if battery is fully charged?

This is the best method to check if the battery is fully charged or not. In this method you have to check specific gravity of each cells in the battery. With discharging the sulfuric acid content of electrolyte solution is decreased which means only water is left. Thus with discharged the specific gravity also decreases.

What is energy storage capacity?

Energy storage capacity is measured in megawatt-hours (MWh) or kilowatt-hours (kWh). Duration: The length of time that a battery can be discharged at its power rating until the battery must be recharged. The three quantities are related as follows:  $\text{Duration} = \text{Energy Storage Capacity} / \text{Power Rating}$ .

What is the difference between power capacity and energy storage capacity?

It can be compared to the nameplate rating of a power plant. Power capacity or rating is measured in megawatts (MW) for larger grid-scale projects and kilowatts (kw) for customer-owned installations. Energy storage capacity: The amount of energy that can be discharged by the battery before it must be recharged.

What do you need to know about a battery?

The key quantities you need to know are as follows: Power capacity or power rating: The maximum amount of power that a battery can instantaneously produce on a continuing basis. It can be compared to the nameplate rating of a power plant.



## How to check if the energy storage cabinet battery is fully charged



### [Energy Storage Solutions Inspection Checklist and Template](#)

2 days ago · Energy Storage Solutions Inspection Checklist and Template Energy storage solutions are essential for storing and releasing energy efficiently. This product category ...

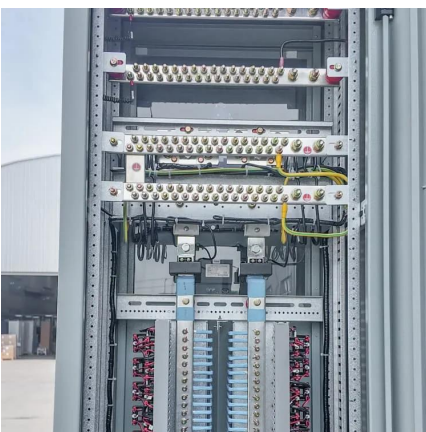
### [Measuring Battery Electric Storage System Capabilities](#)

Growth in battery electric storage system installations is expected to continue with prices declining and use cases being proved through early project data. So how it battery capability measured ...



### [Energy Storage Solutions Inspection Checklist ...](#)

2 days ago · Energy Storage Solutions Inspection Checklist and Template Energy storage solutions are essential for storing and releasing energy ...



## How to Check Battery Capacity: A Complete Guide for Energy Storage

Sep 19, 2025 · What is Battery Capacity Checking? Battery capacity checking refers to the process of determining how much energy a battery can store and deliver. For lithium iron ...



[How can you tell if a battery is fully charged?](#)

2 days ago · The only accurate way to tell if a VRLA DRY CELL AGM or GEL battery is fully charged is by using a good voltmeter to determine the ...



[How to Install and Set Up a Battery Storage Cabinet at Home](#)

Apr 19, 2025 · Understanding Battery Storage Cabinet Components and Benefits Key Components of a Battery Storage System A battery storage system is a sophisticated unit ...



[How to check the remaining power of the energy](#)

How can a battery energy storage system reduce reliability on the grid? Reduce reliability on the grid: When the battery energy storage system is fully charged, how many loads can be ...





### [How is the rated energy of the energy ...](#)

Aug 4, 2024 · Battery capacity is a fundamental element in defining the rated energy of the energy storage cabinet. Capacity is quantified in ampere ...

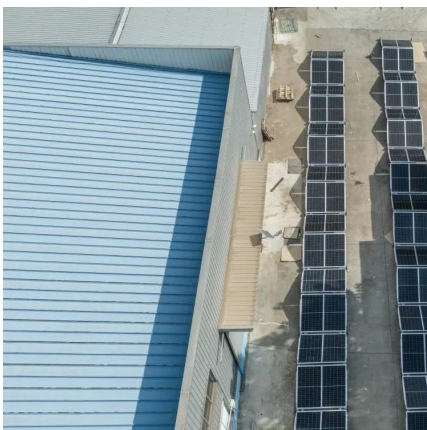
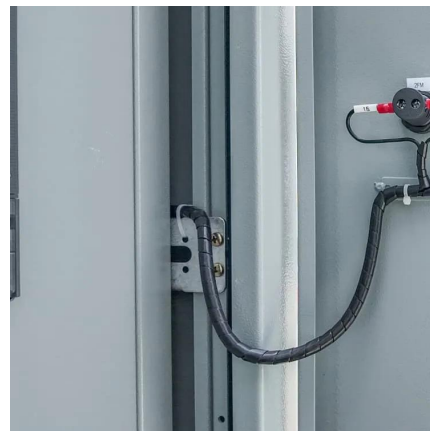


### [How to Verify Energy Storage Capacity: A Step-by-Step ...](#)

Oct 27, 2019 · Why Energy Storage Verification Matters (and Who Cares) Ever tried guessing your phone's battery life? Yeah, that's amateur hour compared to energy storage verification. ...

### **Operation of Energy Storage Battery Cabinets on the Grid Side**

Aug 24, 2024 · Energy storage battery cabinets are integral components of energy storage systems. Their operation on the grid side involves energy charge/discharge management, ...



### **How do I check the remaining capacity of a portable energy storage**

Jul 28, 2025 · Portable energy storage devices come in various shapes and sizes, from small, pocket - sized power banks to large, heavy - duty 300w Portable Power Station. These ...



### [How can you tell if a battery is fully charged?](#)

2 days ago · The only accurate way to tell if a VRLA DRY CELL AGM or GEL battery is fully charged is by using a good voltmeter to determine the open circuit voltage (OCV) without any ...

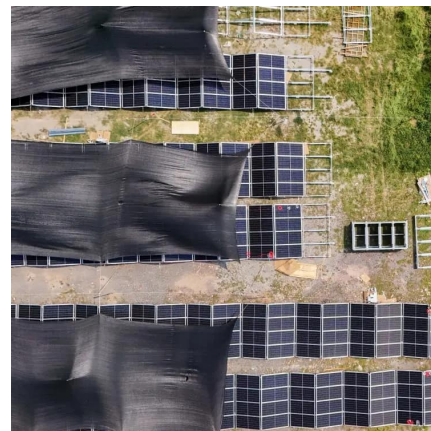


### [Measuring Battery Electric Storage System ...](#)

Growth in battery electric storage system installations is expected to continue with prices declining and use cases being proved through early project ...

### [How is the rated energy of the energy storage cabinet ...](#)

Aug 4, 2024 · Battery capacity is a fundamental element in defining the rated energy of the energy storage cabinet. Capacity is quantified in ampere-hours (Ah), reflecting the total amount of ...



## Contact Us

For technical specifications, project proposals, or partnership inquiries, please visit:  
<https://www.eiei.pl>



## Scan QR Code for More Information



<https://www.eiei.pl>