

# How much electricity does base station communication equipment consume in a day





## Overview

---

How much energy does a communication base station use a day?

A small-scale communication base station communication antenna with an average power of 2 kW can consume up to 48 kWh per day. 4,5,6 Therefore, the low-carbon upgrade of communication base stations and systems is at the core of the telecommunications industry's energy use issues. Do base stations dominate the energy consumption of the radio access network?

Furthermore, the base stations dominate the energy consumption of the radio access network. Therefore, it is reasonable to focus on the power consumption of the base stations first, while other aspects such as virtualization of compute in the 5G core or the energy consumption of user equipment should be considered at a later stage.

How do base stations affect mobile cellular network power consumption?

Base stations represent the main contributor to the energy consumption of a mobile cellular network. Since traffic load in mobile networks significantly varies during a working or weekend day, it is important to quantify the influence of these variations on the base station power consumption.

Is there a direct relationship between base station traffic load and power consumption?

The real data in terms of the power consumption and traffic load have been obtained from continuous measurements performed on a fully operated base station site. Measurements show the existence of a direct relationship between base station traffic load and power consumption.

How to reduce the energy consumption of a base station?

So when the inter-cell distance is too large, it is necessary to increase the distance between cells, thus reducing the power consumption of the base station. In the actual network, in order to reduce the energy loss caused by frequent switching, the following two methods can usually be used: increase



the distance between cells.



## How much electricity does base station communication equipment consume

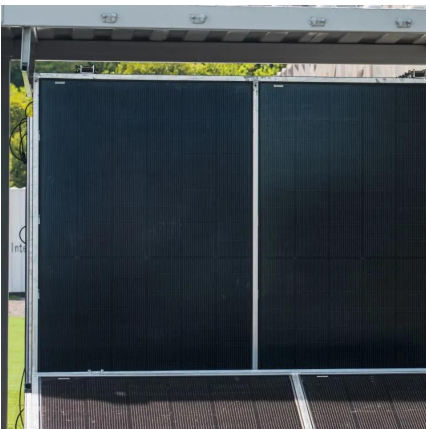


### [EFFICIENT POWER UTILIZATION IN COMMUNICATION ...](#)

Mar 14, 2019 · This parallel increase in usage of cellular phones has led to implementation of communication towers called base stations.. The base stations comprises of electronic ...

### [Energy Consumption of 5G, Wireless Systems ...](#)

5 days ago · Reports on the Increasing Energy Consumption of Wireless Systems and Digital Ecosystem The more we use wireless electronic ...



### [Energy Consumption of ICT](#)

Nov 27, 2024 · Energy is used in the ICT sector to power user devices (such as laptops and smartphones), and the underpinning infrastructure, including communication networks and ...

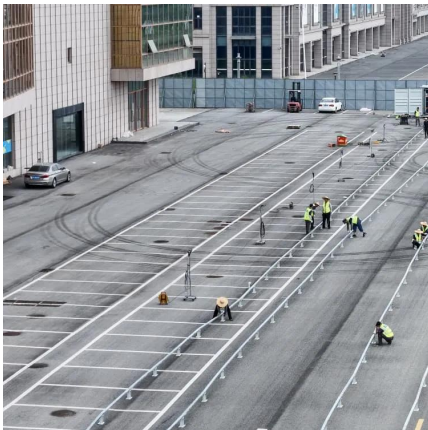
### **Key Factors Affecting Power Consumption in Telecom Base Stations**

Sep 10, 2024 · Discover the key factors influencing power consumption in telecom base stations. Optimize energy efficiency and reduce operational costs with our expert insights.



[Energy-efficiency schemes for base stations in 5G ...](#)

In today's 5G era, the energy efficiency (EE) of cellular base stations is crucial for sustainable communication. Recognizing this, Mobile Network Operators are actively prioritizing EE for ...



[\(PDF\) INVESTIGATORY ANALYSIS OF ENERGY REQUIREMENT ...](#)

Mar 27, 2025 · Energy consumption in mobile communication base stations (BTS) significantly impacts operational costs and the environmental footprint of mobile networks. This study ...



[Measurements and Modelling of Base Station ...](#)

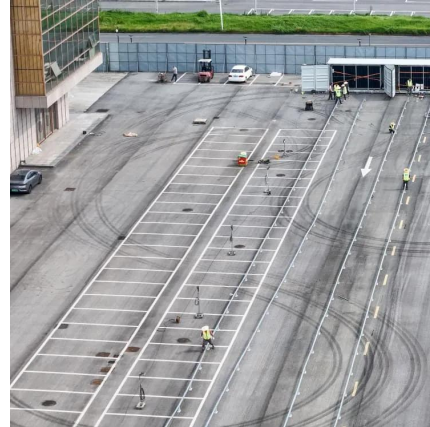
Mar 28, 2012 · Base stations represent the main contributor to the energy consumption of a mobile cellular network. Since traffic load in mobile ...





### [How much power does 5G consume?](#)

One 5G base station is estimated to consume about as much power as 73 households (6), and 3x as much as the previous generation of base ...



### [How Much Power Does 5G Base Station Consume?](#)

Aug 26, 2023 · The Silent Energy Crisis in Mobile Networks Have you ever wondered how much energy our hyper-connected world is consuming? 5G base stations, the backbone of next-gen ...

### [\(PDF\) Power Consumption in ...](#)

Jul 1, 2011 · Abstract and Figures One of the main challenges for the future of in-formation and communication technologies is the reduction of the ...



### [How much electricity does a large ...](#)

Apr 9, 2024 · From the above analysis, it can be seen that a large-scale reverse osmosis desalination plant with a processing capacity of 500,000 ...



### Electricity prices for communication base stations

Nov 19, 2025 · How much energy does a communication base station use a day? A small-scale communication base station communication antenna with an average power of 2 kW can ...



### Power Consumption Modeling of 5G Multi-Carrier Base ...

Jan 23, 2023 · However, there is still a need to understand the power consumption behavior of state-of-the-art base station architectures, such as multi-carrier active antenna units (AAUs), ...

### Power consumption based on 5G communication

Oct 17, 2021 · At present, 5G mobile traffic base stations in energy consumption accounted for 60% ~ 80%, compared with 4G energy consumption increased three times. In the future, high ...



### **How much electricity does base station communication equipment consume**

Does base station power consumption affect traffic load? Since traffic load in mobile networks significantly varies during a base station power consumption. Therefore, this paper ...



### Measurements and Modelling of Base Station Power Consumption ...

Mar 28, 2012 · Base stations represent the main contributor to the energy consumption of a mobile cellular network. Since traffic load in mobile networks significantly varies during a ...



### Energy-Efficient Base Stations , part of Green Communications

Aug 29, 2022 · The impact of the Base Stations comes from the combination of the power consumption of the equipment itself (up to 1500 Watts for a nowadays macro base station) ...

### [\(PDF\) INVESTIGATORY ANALYSIS OF ENERGY ...](#)

Mar 27, 2025 · Energy consumption in mobile communication base stations (BTS) significantly impacts operational costs and the environmental ...



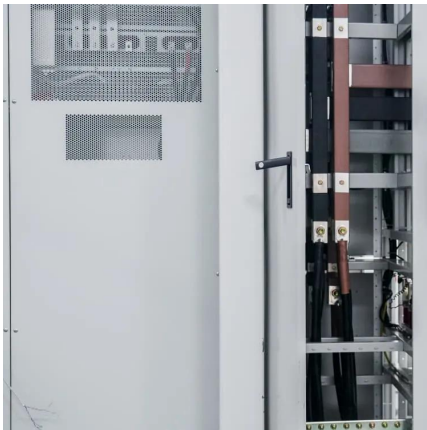
### Comparison of Power Consumption Models for 5G Cellular Network Base

Jul 1, 2024 · The increasing total energy consumption of information and communication technology (ICT) poses the challenge of developing sustainable solutions in the area of ...



### Key Factors Affecting Power Consumption in ...

Sep 10, 2024 · Discover the key factors influencing power consumption in telecom base stations. Optimize energy efficiency and reduce operational ...



### Base Station Energy Use in Dense Urban and Suburban ...

The available references on energy consumption in global mobile networks are rather old and highly averaged only estimates of energy consumption relative to data volumes are available. ...

### **Measurements and Modelling of Base Station Power Consumption under Real**

Abstract Base stations represent the main contributor to the energy consumption of a mobile cellular network. Since traffic load in mobile networks significantly varies during a working or ...



## **Contact Us**

---

For technical specifications, project proposals, or partnership inquiries, please visit:  
<https://www.eiei.pl>



## Scan QR Code for More Information



<https://www.eiei.pl>