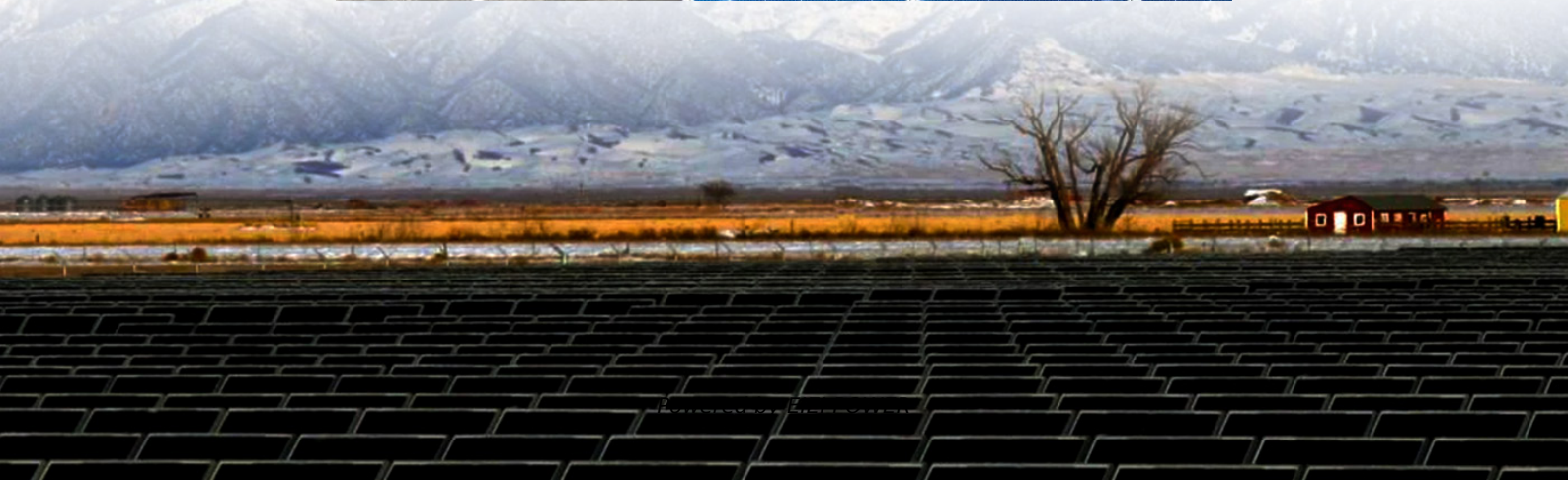


How much does the weight of the double-glass module increase





Overview

How much does a glass module weigh?

The weight of glass-glass modules are still an issue, with current designs using 2 mm thick glass on each side for framed modules, the weight is about 22 kg, while 2.5 mm on each side will increase the module's weight to 23 kg. Compared to traditional glass-foil modules, which are about 18 kg, this is a 20% increase in weight.

What is a double glass module?

In contrast, double glass modules replace the polymer layer with another glass sheet, creating a robust sandwich structure. At IBC SOLAR, we use 2,0 mm x 2,0 mm glass layers, whereas some other market offerings use thinner 1,6 mm x 1,6 mm layers. This ensures greater durability and longevity.

What is a double glass solar module?

In the ever-evolving world of photovoltaic technology, double glass solar modules are emerging as a game-changer. By encapsulating solar cells between two layers of glass, these modules offer unparalleled durability and efficiency. But what exactly sets them apart?

What are double glass solar modules?

.

What is the bifaciality of a double glass module?

Bifaciality: The bifaciality of double glass modules produces a gain of around 10-11% compared to the power measured on the front panel alone, for TOPCon type modules under so-called BNPI (bifacial nameplate irradiance) test conditions.



How much does the weight of the double-glass module increase



[Single-glass versus double-glass: a deep dive ...](#)

Oct 2, 2024 · Left: a double-glass module; right, a bifacial single-glass module. The wave of industrial consolidation is growing ever more ...

Weight difference between single-glass and double-glass modules

How much does a glass module weigh? The weight of glass-glass modules are still an issue, with current designs using 2 mm thick glass on each side for framed modules, the weight is about ...



Single-glass versus double-glass: a deep dive into module ...

Oct 2, 2024 · Left: a double-glass module; right, a bifacial single-glass module. The wave of industrial consolidation is growing ever more pronounced, shaping the landscape with each ...

[Something About Double-glass PV Modules. Transparent ...](#)

Sep 28, 2025 · It is estimated that the original photovoltaic glass required for the production of 1GW 2.5mm double glass modules, 2.0mm



double glass modules, and single glass modules is ...

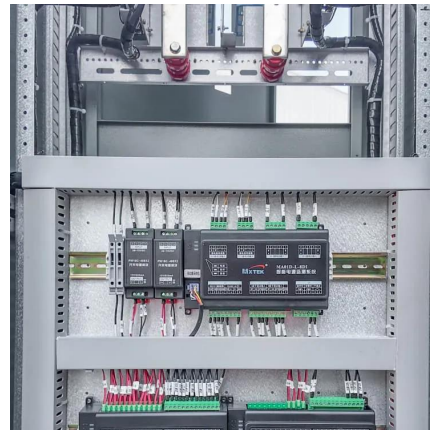


Glass-Glass PV Modules

Glass-Glass module designs are an old technology that utilises a glass layer on the back of modules in place of traditional polymer backsheets. They were heavy and expensive allowing ...

Double the strengths, double the benefits

Feb 21, 2025 · In the ever-evolving world of photovoltaic technology, double glass solar modules are emerging as a game-changer. By encapsulating solar cells between two layers of glass, ...



Differences between double-glass and single-glass ...

Are double glass panels better than single glass? This efficiency boost comes with a price, though. Single glass panels are often slightly more efficient under ideal conditions due to their ...



Glass-Glass PV Modules

Glass-Glass module designs are an old technology that utilises a glass layer on the back of modules in place of traditional polymer backsheets. They ...



Double the strengths, double the benefits

Feb 21, 2025 · In the ever-evolving world of photovoltaic technology, double glass solar modules are emerging as a game-changer. By encapsulating ...

Can double glass module become trend?

Weight too much, 30% increase compared with normal panel. Glass weight more than 70% in the dual glass module, now glass makers are trying to reduce glass thickness from 2.5mm to ...



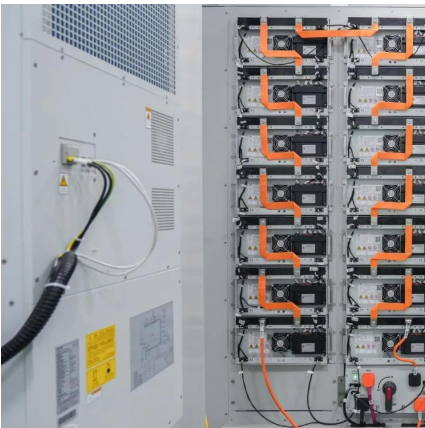
Photovoltaic double-glass panel glass thickness ...

The weight of glass-glass modules are still an issue, with current designs using 2 mm thick glass on each side for framed modules, the weight is about 22 kg, while 2.5 mm on each side will ...



INSTRUCTIONS FOR PREPARATION OF PAPERS

Nov 1, 2025 · The double glass module design offers not only much higher reliability and longer durability but also significant Balance of System cost savings by eliminating the aluminum ...



What are the advantages of dual-glass Dualsun modules?

Nov 26, 2025 · The thickness of the front glass generally used for this type of structure is 3.2 mm. Dual-glass type modules (also called double glass or glass-glass) are made up of two glass ...

Contact Us

For technical specifications, project proposals, or partnership inquiries, please visit:
<https://www.eiei.pl>



Scan QR Code for More Information



<https://www.eiei.pl>