

How many watts inverter is suitable for 12v20ah





Overview

What voltage should a 12V inverter run on?

The input voltage of the inverter should match the battery voltage. (For example 12v battery for 12v inverter, 24v battery for 24v inverter and 48v battery for 48v inverter Summary What Will An Inverter Run & For How Long?

.

What is a 12V inverter load calculation?

The formula is based on a standard 12V battery: What is an inverter load calculation?

Inverter load calculation is the process of estimating the total power (in Watts) consumed by all appliances you plan to connect to your inverter. This helps you choose an inverter and battery with sufficient capacity to power your home during an outage.

How do I choose the best inverter for my 200Ah battery?

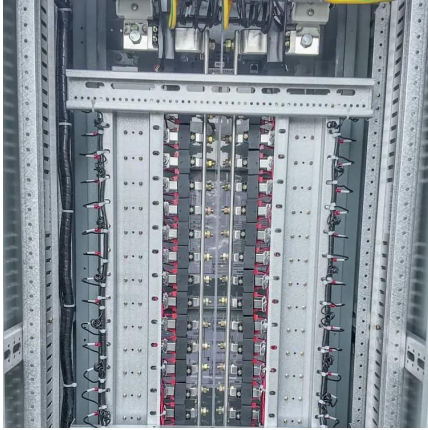
Ensure they are both compatible (most inverters work with standard 12V batteries) and match each other's specifications for optimal performance. By carefully considering these factors and selecting an appropriate-sized inverter, you can ensure efficient operation without putting unnecessary strain on your 200Ah lithium battery.

What is the recommended battery size for an inverter?

Interpreting Results: Once you input the required data, the calculator will generate the recommended battery size in ampere-hours (Ah). For instance, if your power consumption is 500 watts, the usage time is 4 hours, and the inverter efficiency is 90%, the calculator might suggest a battery size of approximately 222 Ah.



How many watts inverter is suitable for 12v20ah



[Best Sized Inverter For 12 Volt Battery \[Updated On: ...](#)

Jul 6, 2025 · BESTEK 500W Power Inverter DC 12V to 110V AC Converter - Best for moderate power output from 12V batteries Battery Tender 200 Watt Power Inverter - 12 Volt DC to 115 - ...

[What Size Inverter Can I Run Off a 200Ah ...](#)

Aug 20, 2025 · You can run an inverter rated between 1500W and 2400W off a 200Ah lithium battery depending on voltage and usage. Typically, a 12V ...



[Calculate Battery Size for Inverter Calculator](#)

Mar 14, 2025 · The Calculate Battery Size for Inverter Calculator helps you determine the optimal battery capacity needed to support your inverter ...

Inverter Calculator

Change values in the boxes with arrows and the calculator will adjust to show you other system specifications: Inverter Input Inverter Power Rating ...



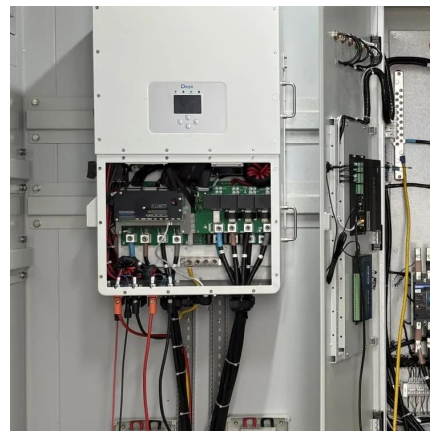
[The Only Inverter Size Chart You'll Ever Need](#)

Sep 25, 2023 · We have created a comprehensive inverter size chart to help you select the correct inverter to power your ...



[The Only Inverter Size Chart You'll Ever Need](#)

Sep 25, 2023 · We have created a comprehensive inverter size chart to help you select the correct inverter to power your appliances.



[Inverter Load Calculation: A Complete Guide for Your Home](#)

Aug 17, 2025 · Frequently Asked Questions What is an inverter load calculation? Inverter load calculation is the process of estimating the total power (in Watts) consumed by all appliances ...





[Calculate Battery Size for Inverter Calculator](#)

Mar 14, 2025 · The Calculate Battery Size for Inverter Calculator helps you determine the optimal battery capacity needed to support your inverter system. By inputting critical parameters such ...



[What Size Inverter Can I Run Off a 200Ah Lithium Battery?](#)

Aug 20, 2025 · You can run an inverter rated between 1500W and 2400W off a 200Ah lithium battery depending on voltage and usage. Typically, a 12V 200Ah battery supports up to about ...

Inverter Calculator

Change values in the boxes with arrows and the calculator will adjust to show you other system specifications: Inverter Input Inverter Power Rating Inverter Output 12VDC 24VDC 48VDC ...



How Do You Choose the Right Inverter Size for Your Specific ...

Oct 28, 2024 · To choose the right inverter size for your specific power needs, first calculate your total power requirements in watts. Multiply the battery capacity (in Ah) by its voltage (typically ...



How to translate peak watts to battery and inverter size safely

Sep 9, 2025 · Power your home safely! Master peak watts to precisely size your battery and inverter. Avoid costly mistakes and ensure reliable energy independence.



[Calculate Battery Size For Any Size Inverter \(Using Our ...](#)

Inverter Battery Size Calculator
How to Calculate Battery Capacity For Inverter
How Many Batteries For 3000-Watt Inverter
Battery Size Chart For Inverter
Battery to Inverter Wire Size Chart
To calculate the battery capacity for your inverter use this formula
$$\text{Inverter capacity (W)} \times \text{Runtime (hrs)} / \text{solar system voltage} = \text{Battery Size} \times 1.15$$

Multiply the result by 2 for lead-acid type battery, for lithium battery type it would stay the same
Example Let's suppose you have a 3000-watt inverter with an 85% efficiency rate and your daily runtime
See more on [dotwatts](#)
[thebatterytips](#)

Best Sized Inverter For 12 Volt Battery ...

Jul 6, 2025 · BESTEK 500W Power Inverter DC 12V to 110V AC Converter - Best for moderate power output from 12V batteries
Battery Tender 200 ...

[How many watts can a 12v 20ah inverter produce](#)

Here's a chart with the conversion of different size 12v batteries in watts. 12v 7Ah battery is equal to 84 watts. 12v 12Ah battery is equal to 144 watts. 12v 100Ah battery is equal to 1200 watts or ...



[Calculate Battery Size For Any Size Inverter \(Using Our ...](#)

Mar 3, 2023 · So I have made it easy for you, use the calculator below to calculate the battery size for 200 watt, 300 watt, 500 watt, 1000 watt, 2000 watt, 3000 watt, 5000-watt inverter

Contact Us

For technical specifications, project proposals, or partnership inquiries, please visit:
<https://www.eiei.pl>

Scan QR Code for More Information



<https://www.eiei.pl>