

# How many watts can a 12v200a inverter use





## Overview

---

What size inverter for a 200Ah battery?

To determine the appropriate inverter size for a 200AH battery, you need to consider the total wattage of the devices you plan to power. A general rule is to choose an inverter that can handle at least 1.5 times the total wattage of your devices. For example, if your devices require 800 watts, a 1200-watt inverter would be suitable. 1.

How many watts is a 12V inverter?

Low voltage?

Blown fuse in the inverter or in the 12V outlet?

Typically a 150 watt inverter is about all you can power from the 12v outlet in your vehicle. it should turn on with no load connected ( no 120V equipment plugged ).

How much wattage should an inverter handle?

A general rule is to choose an inverter that can handle at least 1.5 times the total wattage of your devices. For example, if your devices require 800 watts, a 1200-watt inverter would be suitable. 1. Understanding Battery Capacity 2. Determining Device Wattage 3. Calculating Inverter Size.

Will a 150 watt inverter power a 12V outlet?

Typically a 150 watt inverter is about all you can power from the 12v outlet in your vehicle. it should turn on with no load connected ( no 120V equipment plugged ).



## How many watts can a 12v200a inverter use



### What Size of Inverter Is Good for a 200Ah Battery?

The best inverter size for a 200Ah battery depends on the system voltage and your power needs. A 12V 200Ah battery typically pairs well with a 1000W-2000W inverter, while a 24V setup can ...

### Can A 200Ah Battery Run On A 2000 Watt Inverter? Load ...

Mar 30, 2025 · A 200Ah battery can support a 2000W inverter for about 2.2 hours at full capacity. If you use a 400W appliance, the runtime extends to roughly 11 hours.



### What Size Inverter Do I Need for a 200AH Battery?

Dec 15, 2023 · To determine the appropriate inverter size for a 200AH battery, you need to consider the total wattage of the devices you plan to power. A general rule is to choose an ...



## Inverter Calculator

Change values in the boxes with arrows and the calculator will adjust to show you other system specifications: Inverter Input Inverter Power Rating ...



### [What Size Inverter Do I Need for a 200Ah Lithium Battery](#)

Apr 13, 2024 · This means you can operate larger inverters and loads with the same or smaller battery capacity, maximizing system lifespan. How should you match inverter size to your ...



### [Choosing the Best Inverter Size for a 200Ah ...](#)

Jun 7, 2025 · A 3,000W inverter on a 12V system draws 250A, which may exceed safe discharge rates for many lithium batteries. How Long Will a ...



### [How Many Watts Does a 200Ah Battery Have?](#)

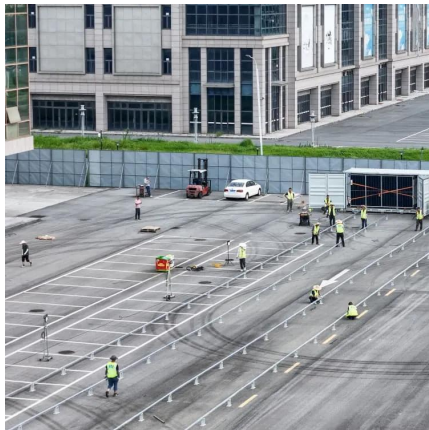
Dec 5, 2025 · Understanding how many watts a 200Ah battery has is essential whether you're setting up a home inverter, planning a solar system, or selecting commercial UPS solutions ...





### Which Inverter is Suitable for a 200Ah Battery?

Apr 23, 2025 · A 1000W inverter is suitable for many applications, but a larger inverter (up to 2000W) may be necessary if you need to run higher-power devices. For low-power ...

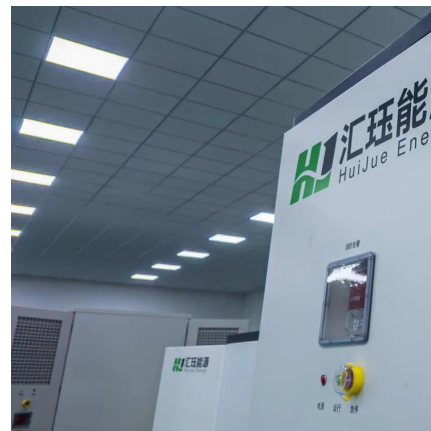


### What Size Inverter Can I Run Off a 200Ah Lithium Battery?

Aug 20, 2025 · You can run an inverter rated between 1500W and 2400W off a 200Ah lithium battery depending on voltage and usage. Typically, a 12V 200Ah battery supports up to about ...

### Which Inverter is Suitable for a 200Ah Battery?

Apr 23, 2025 · A 1000W inverter is suitable for many applications, but a larger inverter (up to 2000W) may be necessary if you need to run higher ...



### What Size Inverter Do I Need for a 200Ah ...

Apr 13, 2024 · This means you can operate larger inverters and loads with the same or smaller battery capacity, maximizing system lifespan. How ...



## Inverter Calculator

Change values in the boxes with arrows and the calculator will adjust to show you other system specifications: Inverter Input Inverter Power Rating Inverter Output 12VDC 24VDC 48VDC ...



### [What Size Inverter Can I Run Off a 200Ah Battery?](#)

What is the formula to calculate the inverter size needed for a 200Ah battery? To calculate the inverter size, first determine the total load in watts. Then, ensure the inverter can handle this ...

### [Choosing the Best Inverter Size for a 200Ah Lithium Battery](#)

Jun 7, 2025 · A 3,000W inverter on a 12V system draws 250A, which may exceed safe discharge rates for many lithium batteries. How Long Will a 200Ah Lithium Battery Run a 1500W Load?



## Contact Us

For technical specifications, project proposals, or partnership inquiries, please visit: <https://www.eiei.pl>



## Scan QR Code for More Information



<https://www.eiei.pl>