

How many volts can a 12 volt inverter convert





Overview

What is a 12V to 240V inverter?

A 12V to 240V inverter is a pivotal device designed to convert direct current (DC) power from a 12-volt battery into alternating current (AC) power with a nominal output of 240 volts. This conversion is vital for running household appliances, electronic devices, and other equipment that require standard AC power.

What is a 12V DC power inverter?

This is where a power inverter comes in. Definition and Working Principle A 12V DC power inverter is a device that converts low-voltage direct current (DC) power from a 12V battery (such as a car battery or deep-cycle battery) into 120V alternating current (AC) power, making it suitable for household appliances and electronic devices.

How much battery does a 12 volt inverter need?

As a rule of thumb, the minimum required battery capacity for a 12-volt system is around 20 % of the inverter capacity. For 24-volt inverters, it is 10 %. The battery capacity for a 12-volt Mass Sine 12/1200, for instance, is 240 Ah, while a 24-volt Mass Sine 24/1500 inverter would require at least 150 Ah.

Should I choose a 12 volt or 24 volt inverter?

When diving into the world of off-grid power systems, RV setups, or backup power solutions, one of the crucial decisions you'll face is choosing between a 12 voltage inverter and a 24 volt inverter. This choice can significantly impact the efficiency, performance, and overall functionality of your power system.



How many volts can a 12 volt inverter convert



[Inverter AC to DC Amperage Conversion ...](#)

Oct 7, 2025 · For this, you need a DC-to-AC power inverter that takes the ...

[How many volts does the energy storage ...](#)

Apr 14, 2024 · How many volts does the energy storage inverter have? 1. Energy storage inverters typically operate within a range of voltages, ...

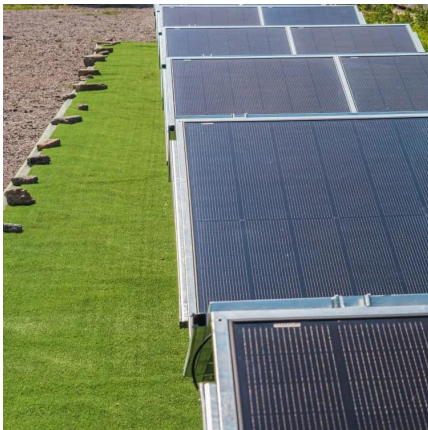


[Watts, Volts, Amps Calculator - self2solar](#)

Jan 10, 2025 · Inverter Size: 500 watts (W)
Battery Voltage: 12 volts (V) Battery Capacity:
500 Watt-Hours (Equal to 42 Amps-Hours at 12V;
 $500 / 12 = 42 \text{ Ah}$) Suppose you have a fan ...

[Watts, Volts, Amps Calculator - self2solar](#)

Jan 10, 2025 · Inverter Size: 500 watts (W)
Battery Voltage: 12 volts (V) Battery Capacity:
500 Watt-Hours (Equal to 42 Amps-Hours at 12V;
500 / ...

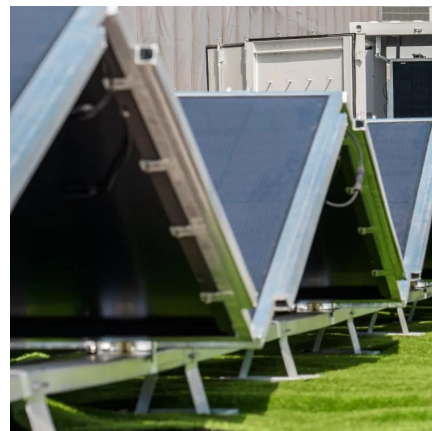


[Understanding inverter voltage](#)

A 12V to 240V inverter is a pivotal device designed to convert direct current (DC) power from a 12-volt battery into alternating current (AC) power with a nominal output of 240 volts.

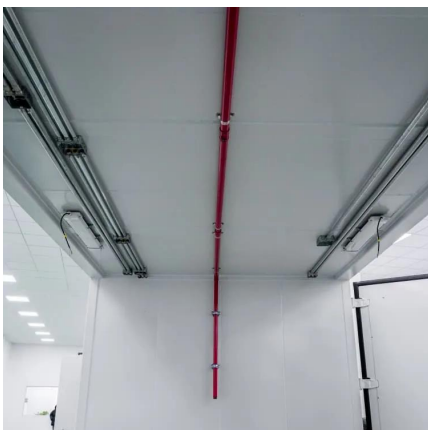
Inverter Calculator

Change values in the boxes with arrows and the calculator will adjust to show you other system specifications: Inverter Input Inverter Power Rating ...



[A comprehensive guide to inverter voltage](#)

Dec 18, 2024 · What is a 12VDC to 120VAC inverter? 12VDC to 120VAC Inverter is a common device that converts 12V DC power to AC power with a nominal output of 120V. 120 volts AC ...





[Inverter AC to DC Amperage Conversion Calculator](#)

Oct 7, 2025 · For this, you need a DC-to-AC power inverter that takes the DC voltage a battery provides and inverts it to AC voltage so that you can run an AC-powered device. Read on to ...



[12V vs 24V Inverter: What's The Difference](#)

Inverters play a crucial role in modern power systems, converting DC (direct current) to AC (alternating current) for use in everyday devices. When ...

[Frequently Asked Questions about Inverters](#)

Frequently Asked Questions about Inverters How much battery capacity do I need with an inverter? As a rule of thumb, the minimum required battery capacity for a 12-volt system is ...



[Frequently Asked Questions about Inverters](#)

How Much Battery Capacity Do I Need with An Inverter?How Much Power Does An Inverter consume?Is There A Stand-By Switch on The Inverter?Can I Power A Computer with An Inverter?Can A Microwave Be Powered with An Inverter?Are There Any Appliances That Cannot Be Powered by An Inverter?How Much Current Will An Inverter Draw from My Batteries?How Thick Should My Battery Cables be?Does An Inverter Need A Lot of Ventilation?Can An Inverter Be Used in Parallel with The Generator



Or The Grid?As a rule of thumb, the minimum required battery capacity for a 12-volt system is around 20 % of the inverter capacity. For 24-volt inverters, it is 10 %. The battery capacity for a 12-volt Mass Sine 12/1200, for instance, is 240 Ah, while a 24-volt Mass Sine 24/1500 inverter would require at least 150 Ah. The indicated battery capacity is only for See more on mastervolt Tycorun Batteries

Understanding inverter voltage - common voltage ...

A 12V to 240V inverter is a pivotal device designed to convert direct current (DC) power from a 12-volt battery into alternating current (AC) power with a nominal output of 240 volts.

[What Is A Solar Inverter 12 Volt?](#)

Jul 11, 2025 · A 12V inverter's input range (10-15V) ensures stable output even with battery voltage drops. Pro Tip: Pair with a 12V LiFePO4 battery for 2000+ cycles instead of lead-acid's ...

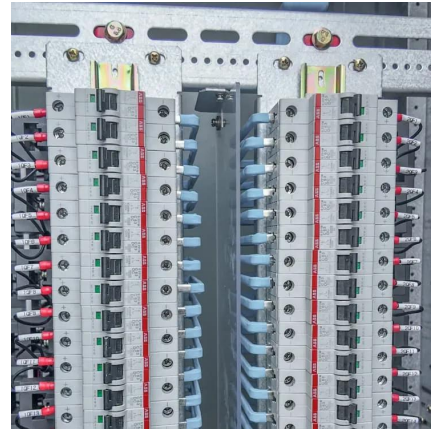


[12 Volt DC Power Inverter: In-Depth Learning and Buying ...](#)

Mar 31, 2025 · Discover how a 12-volt DC power inverter works, its applications, and how to choose the best one, Topbull inverters, for reliable and safe power on the go!

Inverter Calculator

Change values in the boxes with arrows and the calculator will adjust to show you other system specifications: Inverter Input Inverter Power Rating Inverter Output 12VDC 24VDC 48VDC ...



[12V vs 24V Inverter: What's The Difference & Which is Better](#)

Inverters play a crucial role in modern power systems, converting DC (direct current) to AC (alternating current) for use in everyday devices. When choosing between a 12 voltage ...



[12 Volt DC Power Inverter: In-Depth Learning ...](#)

Mar 31, 2025 · Discover how a 12-volt DC power inverter works, its applications, and how to choose the best one, Topbull inverters, for ...



[How many volts does the energy storage inverter have?](#)

Apr 14, 2024 · How many volts does the energy storage inverter have? 1. Energy storage inverters typically operate within a range of voltages, commonly between 12V to 60V, 2. The ...





Contact Us

For technical specifications, project proposals, or partnership inquiries, please visit:
<https://www.eiei.pl>

Scan QR Code for More Information



<https://www.eiei.pl>