

How many strings are needed for a 60v40a solar container lithium battery pack





Overview

Can a lithium ion battery pack have multiple strings?

Whenever possible, using a single string of lithium cells is usually the preferred configuration for a lithium ion battery pack as it is the lowest cost and simplest. However, sometimes it may be necessary to use multiple strings of cells. Here are a few reasons that parallel strings may be necessary:

How many paralleled strings can a battery bank have?

The maximum is at around 3 (or 4) paralleled strings. The reason for this is that with a large battery bank like this, it becomes tricky to create a balanced battery bank. In a large series/parallel battery bank, an imbalance is created because of wiring variations and slight differences in battery internal resistance.

How many cells do I need to create a battery pack?

So, you would need 42 cells in total to create a battery pack with 24V and 20Ah using cells with 3.7V and 3.5Ah. 1. Why do I need to connect cells in series for voltage?

Connecting cells in series increases the overall voltage of the battery pack by adding the voltage of each individual cell.

How many volts are in a battery pack?

If each cell is 10 amp hours and 3.3 volts, the battery pack above would be 10 amp hours and 26.4 volts (3.3 volts x 8 cells). For this setup, a BMS capable of monitoring 8 cells in series is necessary. Lithium cells can almost always be paralleled directly together to essentially create a larger cell.



How many strings are needed for a 60v40a solar container lithium b



[Cells Per Battery Calculator](#)

Nov 8, 2024 · The Cells Per Battery Calculator is a tool used to calculate the number of cells needed to create a battery pack with a specific voltage ...

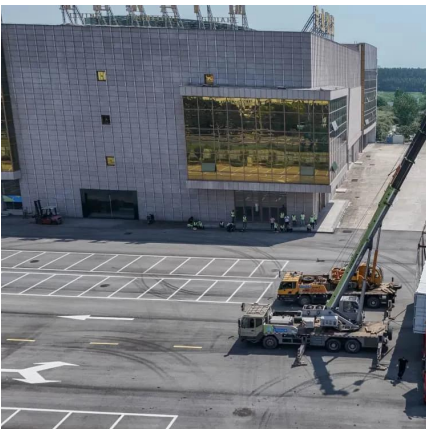
[Battery Pack Calculator . Good Calculators](#)

Here's a useful battery pack calculator for calculating the parameters of battery packs, including lithium-ion batteries. Use it to know the voltage, capacity, energy, and maximum discharge ...



[How to tell how many strings a new lithium battery has](#)

How many strings should a lithium battery have? Therefore, the lithium battery must also be about 58v, so it must be 14 strings to 58.8v, 14 times 4.2, and the iron-lithium full charge is about ...



PVTOOLS

Calculate the optimal string length for photovoltaic applications with this tool from Lawrence Berkeley National Laboratory.



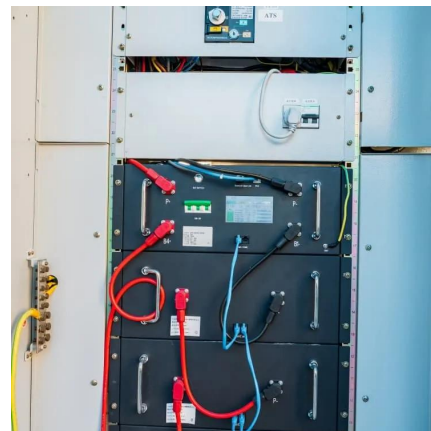
[Cells Per Battery Calculator](#)

Nov 8, 2024 · The Cells Per Battery Calculator is a tool used to calculate the number of cells needed to create a battery pack with a specific voltage and capacity. When designing a battery ...



How many strings are needed for a 60v40a lithium battery pack

How many volts in a ternary lithium battery? Two 10ah batteries in parallel are 20ah, 48v ternary lithium must be 14+14 10ah batteries, and finally 14 parallel connected in series to form a ...



[3. Battery bank wiring](#)

Aug 30, 2024 · 3.2. Large battery banks If a large battery bank is needed, we do not recommend that you construct the battery bank out of numerous ...





How Many Strings of 60V Lithium Battery Packs Are Ideal for ...

Understanding 60V Lithium Battery Pack Configurations Lithium battery strings - series-connected cell groups - directly impact system performance. For industrial and commercial ...



[Lithium Ion Solar Battery Sizing: Accurate ...](#)

Sep 7, 2025 · Sizing a lithium ion solar battery should feel precise, not lucky. Oversized and budget sit in idle capacity. Undersized and lights dip at ...

[Lithium Ion Solar Battery Sizing: Accurate kWh and kW](#)

Sep 7, 2025 · Sizing a lithium ion solar battery should feel precise, not lucky. Oversized and budget sit in idle capacity. Undersized and lights dip at dinner, pumps stumble on start, and ...



[3. Battery bank wiring](#)

Aug 30, 2024 · 3.2. Large battery banks If a large battery bank is needed, we do not recommend that you construct the battery bank out of numerous series/parallel 12V lead acid batteries. ...



Strings, Parallel Cells, and Parallel Strings

Feb 15, 2016 · Strings, Parallel Cells, and Parallel Strings Whenever possible, using a single string of lithium cells is usually the preferred configuration for a lithium ion battery pack as it is ...



HOW MANY POWER STRINGS ARE NEEDED TO ASSEMBLE LITHIUM

Power lithium battery pack cycle times
Manufacturers take a conservative approach and specify the life of Li-ion in most consumer products as being between 300 and 500 discharge/charge ...

Contact Us

For technical specifications, project proposals, or partnership inquiries, please visit:
<https://www.eiei.pl>

Scan QR Code for More Information



<https://www.eiei.pl>