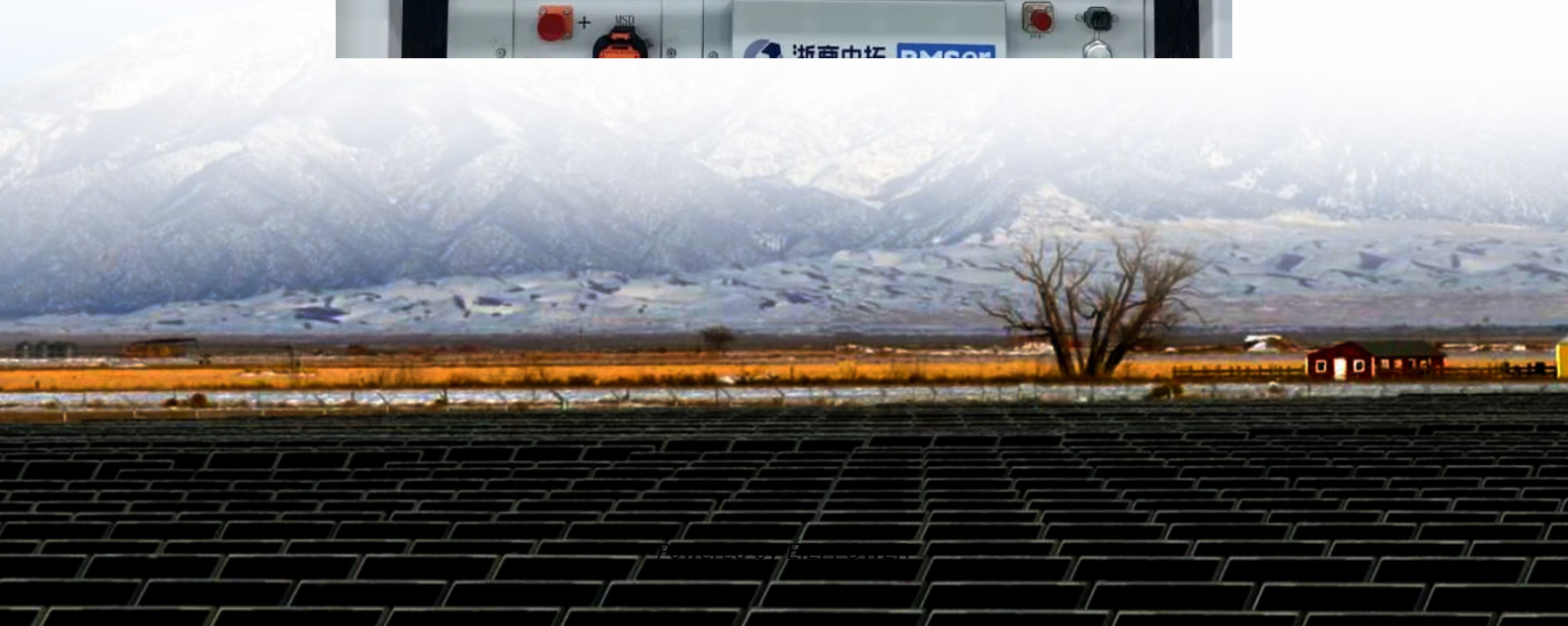


# How many solar panels can Huawei inverter connect to





## Overview

---

How many solar panels can a 600V inverter connect?

If an inverter has a maximum input voltage of 600V and each panel produces 40V, you could connect up to 15 panels in series ( $15 \times 40V = 600V$ ). Going over this voltage limit can harm the inverter or make it shut down, making your solar system less effective or even unusable. Equally important is the minimum input voltage.

Does Huawei have a solar inverter?

Building on decades of experience in large-scale commercial and utility solar, Huawei jumped into the residential solar market in 2018 with an efficient, lightweight hybrid solar inverter offering an impressive range of features at a competitive price.

What is the maximum input voltage of a solar panel inverter?

The maximum input voltage of a solar panel inverter determines how you should set up your solar panels. Here's an example: If an inverter has a maximum input voltage of 600V and each panel produces 40V, you could connect up to 15 panels in series ( $15 \times 40V = 600V$ ).

How many volts can a solar inverter handle?

Each inverter comes with its specific ratings, including input voltage, output power, and the ability to manage several strings of solar panels. For instance, if your inverter supports a maximum input voltage of 600 volts and your solar panel system operates at a lower voltage, you are in safe territory.



## How many solar panels can Huawei inverter connect to

---



Jan 10, 2021 · Does Huawei have a solar inverter? Building on decades of experience in large-scale commercial and utility solar, Huawei jumped into the residential solar market in 2018 with ...

### [How many solar panels can an inverter](#)

...

Sep 20, 2024 · A: Connecting too many solar panels to a single inverter can lead to overloading, which can damage the inverter and result in ...



### [How Many Solar Panels Can I Connect to an ...](#)

4 days ago · Learn how to optimize your solar power system by understanding how many solar panels can be connected to an inverter. ...

### [How Many Solar Panels Can I Connect to an Inverter? A ...](#)

4 days ago · Learn how to optimize your solar power system by understanding how many solar panels can be connected to an inverter. Explore inverter specifications, wiring configurations, ...



## Ultimate Guide 2023: How to Connect Solar Panel to Inverter , HUAWEI

Nov 1, 2023 · Know how to connect a solar panel to inverter for efficient, renewable energy at home. Unfold the benefits and optimization methods for solar power systems.



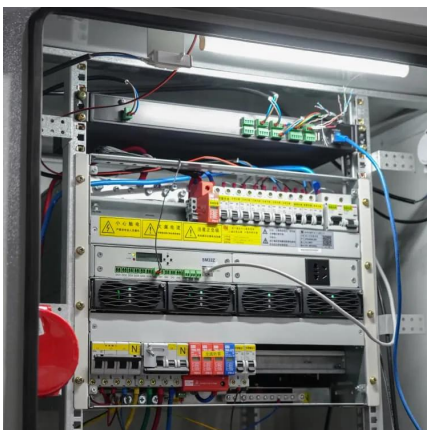
## [Huawei Solar Inverter Complete Guide 2025: ...](#)

Sep 2, 2025 · Comprehensive Huawei solar inverter guide covering SUN2000 series, performance data, pricing, installation tips, and expert ...



## [Huawei Inverter and Battery Review -- Clean ...](#)

Jun 22, 2023 · The second-generation residential solar inverter was released in April 2020, only two years after the first version. The SUN2000-L1 ...





## [Huawei Inverter and Battery Review -- Clean Energy Reviews](#)

Jun 22, 2023 · The second-generation residential solar inverter was released in April 2020, only two years after the first version. The SUN2000-L1 series ranges from 2kW to 6kW and ...



## [How Many Solar Panels Can Be Connected To Solar Inverter?](#)

Mar 7, 2025 · The maximum solar input voltage of the inverter should be used as reference for calculation,  $450V \div 36V = 12.5$ , rounded down to 12 panels,  $12 * 36V = 432V$ , the total voltage ...

## [How Many Solar Panels Can I Connect to an ...](#)

Nov 6, 2024 · Connecting the right number of solar panels to your inverter is about more than just filling space on your roof--it's essential for making ...



## [How many solar panels can an inverter handle](#)

Sep 20, 2024 · A: Connecting too many solar panels to a single inverter can lead to overloading, which can damage the inverter and result in decreased efficiency. Overloading occurs when ...



## [How Many Solar Panels Can One Inverter Handle?](#)

Sep 23, 2025 · To manually calculate the string size, divide the inverter's voltage input range by the voltage output of an individual solar panel, considering any safety margins. This calculation ...



## [Huawei Solar Inverter Complete Guide 2025: Models, ...](#)

Sep 2, 2025 · Comprehensive Huawei solar inverter guide covering SUN2000 series, performance data, pricing, installation tips, and expert reviews. Updated 2025.

## [How Many Solar Panels Can I Connect to an Inverter?](#)

Nov 6, 2024 · Connecting the right number of solar panels to your inverter is about more than just filling space on your roof--it's essential for making your system work efficiently, safely, and ...



## [Ultimate Guide 2023: How to Connect Solar ...](#)

Nov 1, 2023 · Know how to connect a solar panel to inverter for efficient, renewable energy at home. Unfold the benefits and optimization methods ...



## How many photovoltaic panels can Huawei inverter connect to

How many solar panels can a 600V inverter connect? If an inverter has a maximum input voltage of 600V and each panel produces 40V, you could connect up to 15 panels in series (15 x 40V ...



## How Many Solar Panels Can One Inverter

...

Sep 23, 2025 · To manually calculate the string size, divide the inverter's voltage input range by the voltage output of an individual solar panel, ...

## Contact Us

For technical specifications, project proposals, or partnership inquiries, please visit: <https://www.eiei.pl>

**Scan QR Code for More Information**



<https://www.eiei.pl>