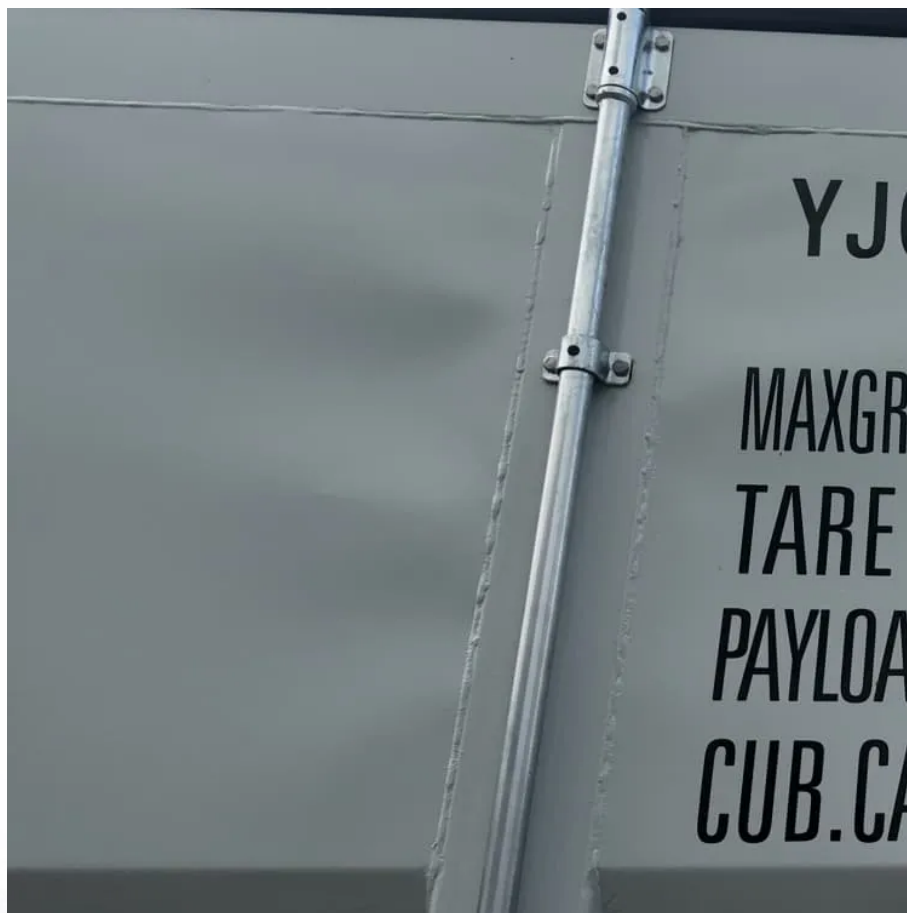


How many kilowatts does the inverter 220v have





Overview

What do kW and kVA mean in inverter specifications?

kW refers to the real or usable power output of an inverter. kVA represents the total power capacity it can carry, including power lost in phase difference (reactive power). For example, an inverter rated at 10 kVA with a power factor of 0.8 can only deliver 8 kW of real power.

How many Watts Does a solar inverter use?

Depending on where they fall in that band and the size of their solar array, they will likely use a 3, 5, or 10kW inverter. You also need to consider surge watts and voltage drop. Surge watts are the extra power required to start appliances that have motors, such as refrigerators and air conditioners.

How big should a solar inverter be?

Generally, it's recommended to size the inverter to 80-100% of the DC system's rated capacity. Before determine the inverter size, the most important thing is to calculate your average daily power consumption (kWh) and calculate your solar panel array size to match your power consumption. You could follow our to make this estimation.

How many kW can a 10 kVA inverter handle?

If your inverter has a power factor of 0.9, then a 10 kVA inverter will deliver only 9 kW of real output. This means the inverter can only handle 10.2 kW of actual load—not 12. Understanding this gap helps avoid overspending on capacity or overloading your system. How does this apply to solar and hybrid inverter systems?



How many kilowatts does the inverter 220v have



[What Size Solar Inverter Do You Need for Solar Panels?](#)

Jun 24, 2024 · How Solar Inverter Sizing Works
The size of the solar inverter you need is directly related to the output of your solar panel array. The inverter's capacity should ideally match the ...

[The Only Inverter Size Chart You'll Ever Need](#)

How to Determine What Size Inverter I Need? What Are The Two Types of Power loads? Inverter Size Chart What Will A 300W Inverter Run? What Will A 500W Inverter Run? What Will A 700W Inverter Run? What Will A 1000W Inverter Run? What Will A 1500W Inverter Run? What Will A 2000W Inverter Run? What Will A 3000W Inverter Run? We have summarized the appliances that inverters from 300W to 3000W can run depending on their rated maximum power. Note to our readers: Use the above formulato determine how many appliances each inverter size can run simultaneously. See more on climatebiz sankepov



Understanding Inverter Power Ratings: kW vs ...

4 days ago · kW (kilowatts) measures real power--what actually powers your appliances. kVA (kilovolt-amps) measures apparent power--the total ...

[How to Choose the Right Size Solar Inverter: Step-by-Step ...](#)

Jul 15, 2025 · Wondering what size solar inverter



do I need for your solar system? This guide walks you through calculating inverter size based on panel capacity, power usage, and safety ...

[What Size Solar Inverter Do You Need for ...](#)

Jun 24, 2024 · How Solar Inverter Sizing Works
The size of the solar inverter you need is directly related to the output of your solar panel array. The ...



[Understanding Inverter Power Ratings: kW vs kVA Explained](#)

4 days ago · kW (kilowatts) measures real power--what actually powers your appliances. kVA (kilovolt-amps) measures apparent power--the total power the inverter handles, including both ...

[3KW, 6KW, 8KW, and Beyond: Choosing the ...](#)

Apr 3, 2025 · Choose the perfect hybrid inverter--3KW, 6KW, 8KW, or higher--for your energy needs. Compare features, efficiency, and ...



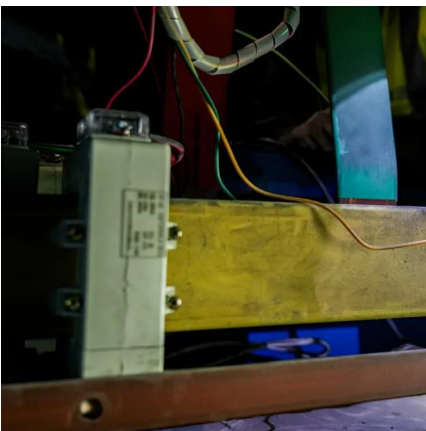


[How to Choose the Right Size Solar Inverter: ...](#)

Jul 15, 2025 · Wondering what size solar inverter do I need for your solar system? This guide walks you through calculating inverter size based on ...

[What is the size of an Inverter Solar 12v 220v?](#)

The power rating of an inverter, usually expressed in watts (W) or kilowatts (kW), indicates the maximum amount of electrical power it can convert from the 12V DC input (from a solar panel ...

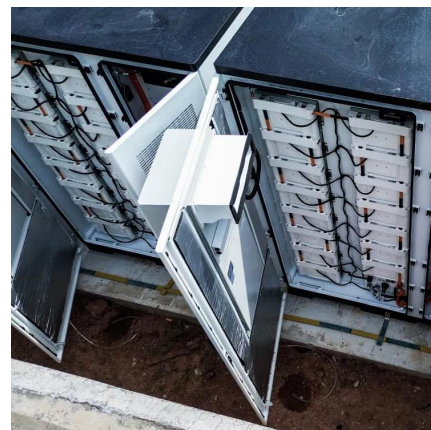


[Inverter Size Calculator - self2solar](#)

Feb 20, 2025 · Determining the Inverter Size to Match the Solar Panel Array Determining the correct inverter size depends on your solar array's ...

[calculate inverter size for solar + Sizing Formula](#)

Jul 27, 2025 · How do I determine the right size of inverter for my solar installation? To calculate the right inverter size, assess your daily energy ...





[Inverter Capacity Calculator](#)

Sep 29, 2025 · Inverter capacity refers to the maximum load that an inverter can handle. It is measured in watts or kilowatts and indicates the amount of electrical power the inverter can ...

[Inverter Size Calculator - self2solar](#)

Feb 20, 2025 · Determining the Inverter Size to Match the Solar Panel Array Determining the correct inverter size depends on your solar array's capacity and your household's power ...



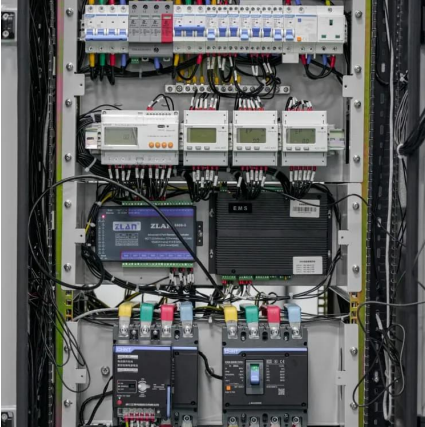
[How To Size A Solar Inverter in 3 Easy Steps](#)

What size solar inverter should you use for your system? In this guide we share how to correctly size a solar inverter in 3 steps.

3KW, 6KW, 8KW, and Beyond: Choosing the Right Hybrid Inverter

Apr 3, 2025 · Choose the perfect hybrid inverter--3KW, 6KW, 8KW, or higher--for your energy needs. Compare features, efficiency, and scalability in this guide.





[calculate inverter size for solar + Sizing Formula](#)

Jul 27, 2025 · How do I determine the right size of inverter for my solar installation? To calculate the right inverter size, assess your daily energy consumption (measured in kWh) from your ...

[The Only Inverter Size Chart You'll Ever Need](#)

Sep 25, 2023 · We have created a comprehensive inverter size chart to help you select the correct inverter to power your appliances.



Contact Us

For technical specifications, project proposals, or partnership inquiries, please visit:
<https://www.eiei.pl>

Scan QR Code for More Information



<https://www.eiei.pl>