

How many boards can be connected to a 10kw inverter





Overview

How many solar panels can a 5kw inverter handle?

If you're wondering how many solar panels you can put on your inverter, the answer is: it depends. The capacity of an inverter is measured in kilowatts (kW), and most household inverters are between 3kW and 10kW. So, a 5kW inverter could handle around 20 standard 250-watt solar panels. But that's not the whole story.

How many batteries do I need for a 10kW inverter?

Therefore, for this 10kW inverter system, at least 2 batteries are required to meet the storage needs. For a solar power system, in addition to batteries, you'll need an adequate number of solar panels to charge your battery bank. The required number of panels depends on their wattage and the average sunlight hours your location receives:.

How many solar panels does a 10kW inverter need?

To produce the 15 kWh needed to charge your battery bank: $15 \text{ kWh} \div 2 \text{ kWh per panel} = 8 \text{ panels}$ Therefore, you'll need at least 8 panels to support a 10kW inverter with a 15 kWh battery bank. In solar system design, it's crucial to stay within the inverter's pv input limits to maintain system safety.

How much power does a 10kVA inverter deliver?

If the Power Factor is 0.8 (common with inductive loads like motors and air conditioners), the real power delivered by the 10kVA inverter would be 8kw ($10\text{kVA} \times 0.8 = 8\text{kW}$). This guide helps you size and match batteries and solar panels for a 10kW inverter system, and provides tips for safe array connections.



How many boards can be connected to a 10kw inverter



[How Many Batteries & Solar Panels for 10KW Inverter - PowMr](#)

Feb 1, 2025 · With the inverter size determined, the steps to match components to the 10kW inverter for optimal system performance will be clear and straightforward. In this guide, we'll ...

[How Many Solar Panels Can I Connect to an ...](#)

4 days ago · Learn how to optimize your solar power system by understanding how many solar panels can be connected to an inverter. ...



[How many boards can be connected to a 10kw inverter](#)

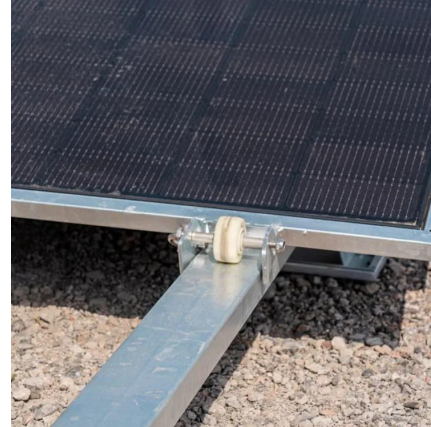
How many panels you'll. A 10kW solar inverter from HopeWind can efficiently support up to 27 solar panels of 550W each, ensuring maximum efficiency and operational safety as ...



[How many solar panels can an inverter](#)

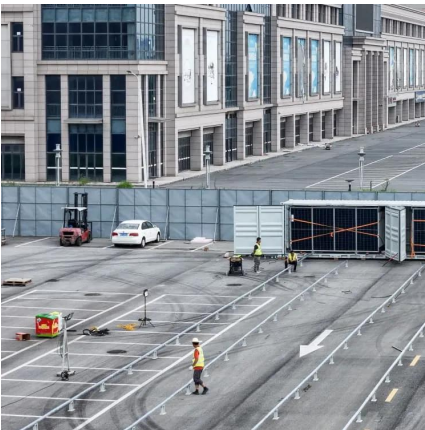
...

Sep 20, 2024 · Efficiency Loss: Account for efficiency losses; it is typical to oversize the inverter to handle peak production without overloading. ...



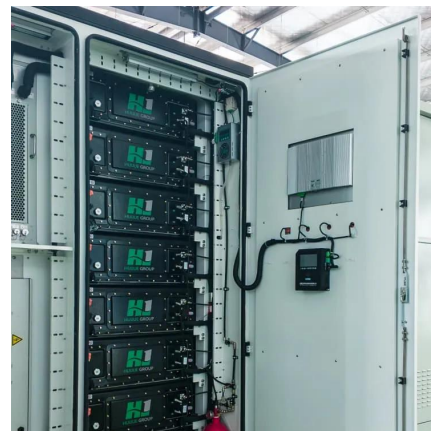
[How many solar panels can an inverter handle](#)

Sep 20, 2024 · Efficiency Loss: Account for efficiency losses; it is typical to oversize the inverter to handle peak production without overloading. Regulations: Always check local regulations and ...



[How Many Batteries & Solar Panels for 10KW ...](#)

Feb 1, 2025 · With the inverter size determined, the steps to match components to the 10kW inverter for optimal system performance will be ...



[How Many Solar Panels Can I Connect To My Inverter?](#)

Jun 20, 2025 · Understanding Inverter Capacity
Inverter capacity is a critical parameter in the solar power system, determining the maximum amount of electrical power the inverter can ...





[How Many Solar Panels Can I Connect to an Inverter? A ...](#)

4 days ago · Learn how to optimize your solar power system by understanding how many solar panels can be connected to an inverter. Explore inverter specifications, wiring configurations, ...



[10kW Inverters: Complete Guide To Choosing & Installing ...](#)

Nov 17, 2025 · Expert guide to 10kW inverters: compare top models, installation tips, cost analysis & sizing. Everything you need for solar backup power systems.

[How many boards are connected to the photovoltaic ...](#)

How many boards are connected to the photovoltaic inverter Can you connect PV panels to an inverter? The use of photovoltaic (PV) panels, which convert sunlight into power, has seen ...



[How Many Solar Panels Can I Connect To My ...](#)

Jun 20, 2025 · Understanding Inverter Capacity Inverter capacity is a critical parameter in the solar power system, determining the maximum amount ...



[Design considerations of a 10kW single-phase string ...](#)

Mar 21, 2025 · Figure 2 illustrates the 10kW, GaN-Based Single-Phase String Inverter with Battery Energy Storage System Reference Design, including all active and passive components.

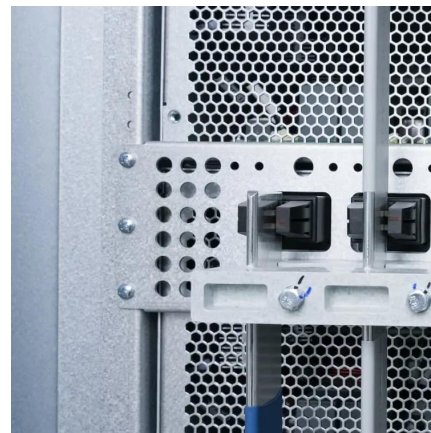


[How many panels can I connect to one inverter?](#)

5 days ago · Find out how many solar panels you can safely and efficiently connect to one inverter. Read our tips on optimal sizing for maximum yield.

[How Many Panels Can I Put on My Inverter?](#)

Oct 10, 2022 · If you're wondering how many solar panels you can put on your inverter, the answer is: it depends. The capacity of an inverter is measured in kilowatts (kW), and most ...



[How Many Panels Can I Put on My Inverter?](#)

How Many Solar Panels For 3000 Watt Inverter? Too Many Solar Panels For Inverter Solar Panel Inverter Size Calculator How Many Panels For 5kw Inverter? Solar Panel String Size Calculator How Many Strings Per Inverter? Can An Inverter Be Too Big? FAQs Conclusion If you're wondering how many solar panels you can put on your inverter, the answer is: it depends. The size of your inverter will dictate how many panels you can connect to it. A small inverter might only



be able to handle a couple of panels, while a larger one could accommodate up to ten. The number of panels you can put on your inverter also depends on the power factor. See more on the power factors. Published: Oct 10, 2022

How many boards can be connected to a 10kw inverter

How many panels you'll. A 10kW solar inverter from HopeWind can efficiently support up to 27 solar panels of 550W each, ensuring maximum efficiency and operational safety as ...

Contact Us

For technical specifications, project proposals, or partnership inquiries, please visit: <https://www.eiei.pl>

Scan QR Code for More Information



<https://www.eiei.pl>