

How long can a 48v inverter discharge





Overview

How long should a battery inverter run?

A 52-minute running time is good enough for you. A 94% efficient inverter can give a good running compared to the other inverters. Remember, the higher the efficiency, the better the running time. We have another example having a 200ah battery capacity. Consider all the above cases of battery discharge, inverter, and efficiency.

How long does a 5000W inverter battery last?

When powering a 5000W inverter at full capacity, the runtime is calculated by dividing the battery's energy storage by the inverter's power consumption ($4.8\text{kWh} \div 5\text{kW} = 0.96$ hours). This means that under these conditions, the 48V 100Ah battery would last about an hour, approximately 58 minutes, to power essential devices during a power outage.

What is a 48v battery run time calculator?

Our 48V Battery Run Time Calculator takes the guesswork out of battery runtime estimation. Just enter your battery capacity, power requirements, and system efficiency to get an accurate estimate of your runtime. This calculator helps you determine how long a 48V battery system will run under specific load conditions.

How long does a 5000 watt inverter run?

Battery Runtime = $100\text{Ah} * 48\text{V} * 0.94 * 0.80 / 5000\text{W}$ A 52-minute running time is good enough for you. A 94% efficient inverter can give a good running compared to the other inverters. Remember, the higher the efficiency, the better the running time. We have another example having a 200ah battery capacity.



How long can a 48v inverter discharge



[How Long Does a 48V Battery Last - PowMr](#)

Dec 9, 2024 · While using 100% Depth of Discharge (DoD) is not ideal for regular use due to potential battery wear, it can provide additional runtime during emergencies. How Long Will a ...

[48V Battery: How Long Can You Run It?](#)

Feb 21, 2025 · A 94% efficient inverter can give a good running compared to the other inverters. Remember, the higher the efficiency, the better the ...



[48V Battery Run Time Calculator](#)

Jan 6, 2025 · This 48V Battery Run Time Calculator helps you determine how long a 48V battery system will run under specific load conditions.

[Battery Backup Calculator](#)

Easily calculate battery backup time for UPS, inverter, or solar systems with our free online Battery Backup Calculator. Fast, accurate, and user-friendly.



[48V Battery: How Long Can You Run It?](#)

Feb 21, 2025 · A 94% efficient inverter can give a good running compared to the other inverters. Remember, the higher the efficiency, the better the running time. 200Ah capacity We have ...



[How Long Does a 48V Battery Last - PowMr](#)

Dec 9, 2024 · While using 100% Depth of Discharge (DoD) is not ideal for regular use due to potential battery wear, it can provide additional runtime ...



[How long will an inverter run off a battery?](#)

Feb 12, 2025 · This article will explore how long a battery can power an inverter and discuss the key factors affecting runtime. Through detailed analysis, we hope readers gain a clearer ...





[What Will An Inverter Run & For How Long? \(With Calculator\)](#)

Mar 3, 2023 · I saw on many forums that most people are confused about what they can run on their 1000,1500,2000,3000, & 5000-watt inverter and how long will their inverter last with a ...

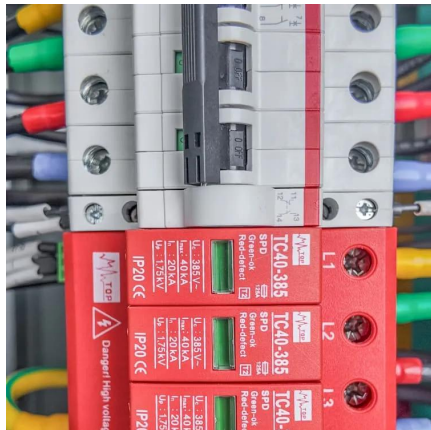


[How long will an inverter run off a battery?](#)

Feb 12, 2025 · This article will explore how long a battery can power an inverter and discuss the key factors affecting runtime. Through detailed ...

[Battery Runtime Calculator . How Long Can A Battery Last](#)

Feb 21, 2024 · The Battery Runtime Calculator is an indispensable tool for anyone using batteries for power supply, be it in RVs, boats, off-grid systems, or even in everyday electronics. This ...



[Battery Runtime Calculator . How Long Can A ...](#)

Feb 21, 2024 · The Battery Runtime Calculator is an indispensable tool for anyone using batteries for power supply, be it in RVs, boats, off-grid ...



What Will An Inverter Run & For How Long?

Mar 3, 2023 · I saw on many forums that most people are confused about what they can run on their 1000,1500,2000,3000, & 5000-watt inverter ...



How long can the Inverter 48v 220v 6000w work continuously?

Conclusion The continuous working time of the Inverter 48v 220v 6000w depends on multiple factors, including battery capacity, load power, inverter efficiency, and environmental ...

How Long Does a 48V 200Ah Lithium Battery Last?

A 48V 200Ah lithium battery lasts 4-8 hours under high loads (2000W+) or 10-20 hours with moderate use (500W). Its total energy capacity is 9.6 kWh (48V × 200Ah). Actual runtime ...



How Long Will A 200Ah Battery Last?

Dec 13, 2024 · o How Long Will A 48v 200ah Battery Last? This household is using a Delong 48V 200Ah solar battery as a backup power source. ...



[How Long Will A 200Ah Battery Last?](#)

Dec 13, 2024 · o How Long Will A 48v 200ah Battery Last? This household is using a Delong 48V 200Ah solar battery as a backup power source. Assuming the depth of discharge is 85%, and ...



Contact Us

For technical specifications, project proposals, or partnership inquiries, please visit:
<https://www.eiei.pl>

Scan QR Code for More Information



<https://www.eiei.pl>