

How do base stations communicate with BSC





Overview

What is a BSc in a mobile network?

Definition and Role: A BSC is a critical component in mobile networks that manages one or more Base Transceiver Stations (BTS), also known as base stations or cell sites. Its primary functions include: **Radio Network Management:** This involves tasks like radio frequency control.

What is a base transceiver station (BSc)?

The BSC is responsible for managing and controlling multiple Base Transceiver Stations (BTS) within a given area, allowing for the efficient use of radio resources and improved network performance. In this article, we will discuss the functions, architecture, and key features of a BSC. The primary functions of a BSC are:

What is a base station controller (BSC)?

The evolution of technologies in base station controller (BSC) architecture reflects the rapid advancements in mobile telecommunications. Initially, BSCs were designed to support 2G networks, focusing on basic voice and text services.

What does a BSc do during a call setup?

During call setup, the BSC coordinates with the mobile switching centre (MSC) and the base transceiver stations (BTS) to establish a connection between the caller and the recipient. This involves allocating the necessary radio channels and ensuring that both parties have the required resources for a successful communication session.



How do base stations communicate with BSC

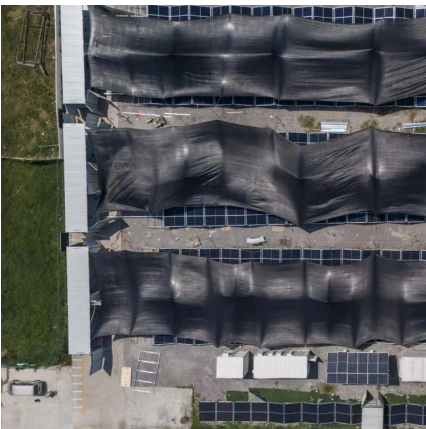


Base Station Controller

A Base Station Controller (BSC) is a key component of an Access Network Part A base station system that manages one or more base transceiver stations (BTS) within a certain area, ...

Base Station's Role in Wireless Communication Networks

Are base stations safe to be around? Yes, base stations are safe to be around, as they comply with stringent safety standards and regulations set by international and national bodies. ...



gsm base station

Nov 30, 2023 · The base station interfaces with the BSC (Base Station Controller) in the network. The A-bis interface connects the BTS to the BSC, allowing for the exchange of control and ...

Mobile switching center in wireless communication

Nov 30, 2023 · The MSC is connected to Base Station Subsystems, which include Base Station Controllers (BSC) and Base Transceiver Stations (BTS). These components manage radio ...



[Understanding Base Station Controller Architecture: A ...](#)

Oct 3, 2024 · Base station controller architecture plays a crucial role in the functioning of mobile networks, serving as the intermediary between mobile devices and the core network. It ...



[Base Transceiver Station](#)

A base transceiver station (BTS) is defined as a network component that serves one cell within a base station system, which is part of a hierarchical structure for communicating with mobile ...



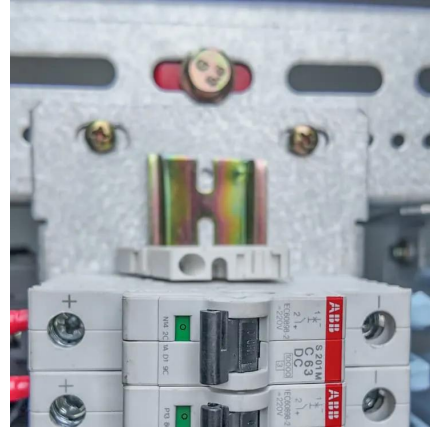
[Types of Base Stations](#)

Jul 23, 2025 · Base stations are one of the widely used components in the field of wireless communication and networks. It is an access point or ...



Understanding the Base Station Subsystem: A ...

Oct 4, 2024 · Base Station Controller (BSC) The Base Station Controller (BSC) is a pivotal component within the Base Station Subsystem, managing multiple Base Transceiver Stations ...



What is the function of the Base Station Subsystem (BSS) in ...

Nov 20, 2023 · The Base Station Subsystem (BSS) is a crucial component of the GSM (Global System for Mobile Communications) architecture. It consists of the Base Transceiver Station ...

How does a base station controller work? - ProfoundQa

Sep 6, 2022 · Which control the working of all base station? A base station controller (BSC) is a critical mobile network component that controls one or more base transceiver stations (BTS), ...



2g 3g 4g architecture with interfaces

Dec 26, 2023 · Let's delve into the architectures of 2G, 3G, and 4G networks, detailing their key components and interfaces. 1. 2G (Second Generation) Architecture: Base Station Subsystem ...



[BSC \(base station controller\)](#)

Mar 4, 2023 · Conclusion In summary, the Base Station Controller (BSC) is a critical component of a cellular network that manages and controls multiple Base Transceiver Stations (BTS) ...



[What is a Base Station in ...](#)

What Does a Base Station do? Signal Transmission and Reception: The primary function of a base station is to transmit and receive radio signals. ...

[BSC \(base station controller\)](#)

Introduction Functions of Bsc Architecture of Bsc Key Features of Bsc Conclusion A Base Station Controller (BSC) is a critical component of a cellular network that serves as the interface between mobile devices and the Mobile Switching Center (MSC) or Radio Network Controller (RNC). The BSC is responsible for managing and controlling multiple Base Transceiver Stations (BTS) within a given area, allowing for the efficient use of See more on telecomtrainer learn-telecom



BSC - Base Station Controller , Learn 2G - GSM

BSC - Base Station Controller A Base Station Controller (BSC) is a critical component in a cellular network, responsible for managing multiple Base Transceiver Stations (BTS). It handles radio ...



BSC

BSC - Base Station Controller A Base Station Controller (BSC) is a critical component in a cellular network, responsible for managing multiple Base Transceiver Stations (BTS). It handles radio ...

GSM

The Base Transceiver Station (BTS) The Base Station Controller (BSC) The BTS and the BSC communicate across the specified Abis interface, enabling operations between components ...



[What is BSC \(base station controller\)](#)

A BSC is a critical component in mobile networks that manages one or more Base Transceiver Stations (BTS), also known as base stations or cell sites. Its primary functions include: Radio ...

[Base Station Controller: 5 Key Insights You Need to Know](#)

Feb 24, 2025 · Base Station Controller: An Overview The base station controller (BSC) plays a critical role in mobile telecommunications. It manages the radio resources for one or more ...





BS (Base Station)

Mar 4, 2023 · A base station (BS) is a key component of modern wireless communication networks, providing the interface between wireless ...

Base Station Controller: Key Role in Mobile Networks

Apr 21, 2025 · The Base Station Controller (BSC) plays a vital role in mobile networks, linking Base Transceiver Stations (BTS) with the Mobile Switching Center (MSC). It handles many ...



Flyriver: Base Station Controllers (BSC): The Backbone of 2G ...

Base Station Controllers (BSCs) are pivotal components in second-generation (2G) and third-generation (3G) cellular networks, acting as crucial intermediaries between the mobile ...

Contact Us

For technical specifications, project proposals, or partnership inquiries, please visit:
<https://www.eiei.pl>



Scan QR Code for More Information



<https://www.eiei.pl>