

How big can a 12 volt inverter be





Overview

How much battery does a 12 volt inverter need?

As a rule of thumb, the minimum required battery capacity for a 12-volt system is around 20 % of the inverter capacity. For 24-volt inverters, it is 10 %. The battery capacity for a 12-volt Mass Sine 12/1200, for instance, is 240 Ah, while a 24-volt Mass Sine 24/1500 inverter would require at least 150 Ah.

What size inverter for a 12V 200Ah battery?

For a 12V 200Ah battery (2.4kWh), a 2000W inverter is ideal. Formula: $\text{Inverter Wattage} \leq (\text{Battery Voltage} \times \text{Ah Rating} \times 0.8)$. Factor in surge power needs but prioritize sustained loads. Always check the battery's max discharge rate (C-rate) to avoid exceeding safe limits. When sizing for 24V or 48V systems, recalculate using the higher voltage.

How much battery does a 24 volt inverter use?

For 24-volt inverters, it is 10 %. The battery capacity for a 12-volt Mass Sine 12/1200, for instance, is 240 Ah, while a 24-volt Mass Sine 24/1500 inverter would require at least 150 Ah. The indicated battery capacity is only for the inverter. The capacity required for other loads should be added to it. How much power does an inverter consume?

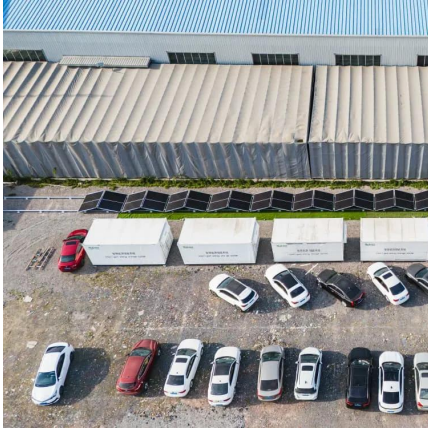
.

Can a 12 volt car battery support a high power inverter?

Typically, a 12-volt car battery can support an inverter with a power range of about 150 watts to 1500 watts. Please note, however, that car batteries are not suitable for driving high power inverters for extended periods of time, which may cause damage to the battery.



How big can a 12 volt inverter be



[The Only Inverter Size Chart You'll Ever Need](#)

How to Determine What Size Inverter I Need? What Are The Two Types of Power loads? Inverter Size Chart What Will A 300W Inverter Run? What Will A 500W Inverter Run? What Will A 700W Inverter Run? What Will A 1000W Inverter Run? What Will A 1500W Inverter Run? What Will A 2000W Inverter Run? What Will A 3000W Inverter Run? Before we go any further, we highly recommend that you choose a pure sine wave inverter. This type of inverter delivers high-quality electricity, similar to your utility company. This way, none of your appliances run the risk of being damaged. Now, when it comes to sizing your inverter, you always need to check your appliances' wattage and ensure t See more on climatebiz Mastervolt

Frequently Asked Questions about Inverters - Mastervolt

Frequently Asked Questions about Inverters How much battery capacity do I need with an inverter? As a rule of thumb, the minimum required battery capacity for a 12-volt system is ...

[Inverter Size Calculator , Find Your Perfect Power Match](#)

Apr 25, 2025 · How the Calculator Works Pick your appliances. Use the dropdown to add common devices--or enter your own custom items. Minimum Inverter Size: The smallest ...





[Calculate Battery Size For Any Size Inverter \(Using Our ...](#)

Mar 3, 2023 · Related Post: Solar Panel Calculator For Battery How To Calculate Battery Capacity For Inverter To calculate the battery capacity for your inverter use this formula ...

[The Only Inverter Size Chart You'll Ever Need](#)

Sep 25, 2023 · We have created a comprehensive inverter size chart to help you select the correct inverter to power your appliances.



What Size Inverter Do I Need to Run a Fridge, Kettle, or ...

Jul 14, 2025 · Choosing the right inverter size is essential to safely and efficiently power your appliances while camping, touring, or living off-grid. In this guide, we'll break down the inverter ...

[Calculate Battery Size For Any Size Inverter ...](#)

Mar 3, 2023 · Related Post: Solar Panel Calculator For Battery How To Calculate Battery Capacity For Inverter To calculate the battery capacity ...



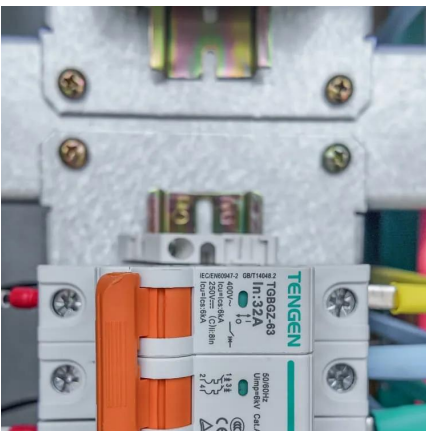


What Size Inverter Do I Need?

But whether you need a big inverter or a small inverter, you can figure out the appropriate size by taking a look through our inverter size calculator. ...

What is the size of an Inverter 220V TO 12V?

For example, a small 100W inverter can be quite compact, maybe about the size of a paperback book. On the other hand, a Inverter 2000w 12v 220v will be significantly larger, perhaps the ...



How to Determine the Right Inverter Size For Your ...

An inverter is a device that turns the power from a 12 volt DC battery, like the one in your car or truck, into the 120 volt AC power that runs all of the electronics in your house. You can use ...

What Size Inverter Do I Need?

But whether you need a big inverter or a small inverter, you can figure out the appropriate size by taking a look through our inverter size calculator. First, how much power does a power inverter ...





[How Big of an Inverter Can My Car Battery Handle?](#)

Mar 26, 2025 · Typically, a 12-volt car battery can support an inverter with a power range of about 150 watts to 1500 watts. Please note, however, that car batteries are not suitable for driving ...

[Can an Inverter Be Too Big for Your Battery System?](#)

How to Calculate the Right Inverter Size for Your Battery Match the inverter's continuous wattage rating to the battery's discharge capacity. For a 12V 200Ah battery (2.4kWh), a 2000W inverter ...



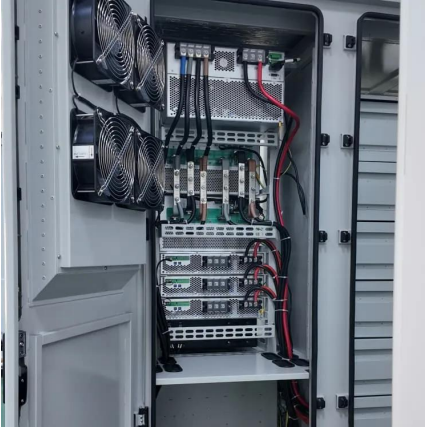
[What is the size of an Inverter 220V TO 12V?](#)

For example, a small 100W inverter can be quite compact, maybe about the size of a paperback book. On the other hand, a Inverter 2000w 12v 220v ...

[How Big of an Inverter Can My Car Battery ...](#)

Mar 26, 2025 · Typically, a 12-volt car battery can support an inverter with a power range of about 150 watts to 1500 watts. Please note, however, that ...





[Frequently Asked Questions about Inverters](#)

Frequently Asked Questions about Inverters How much battery capacity do I need with an inverter? As a rule of thumb, the minimum required battery capacity for a 12-volt system is ...

Contact Us

For technical specifications, project proposals, or partnership inquiries, please visit:
<https://www.eiei.pl>

Scan QR Code for More Information



<https://www.eiei.pl>