

# How big an inverter should I use for a 12v200





## Overview

---

What size inverter for a 12V 200Ah battery?

For a 12V 200Ah battery (2.4kWh), a 2000W inverter is ideal. Formula: Inverter Wattage  $\leq$  (Battery Voltage  $\times$  Ah Rating  $\times$  0.8). Factor in surge power needs but prioritize sustained loads. Always check the battery's max discharge rate (C-rate) to avoid exceeding safe limits. When sizing for 24V or 48V systems, recalculate using the higher voltage.

How do I choose the right inverter size for my 200Ah lithium battery?

When it comes to choosing the right inverter size for your 200Ah lithium battery, there are a few factors you'll need to consider. The first is the power needs of the devices you plan on running off the inverter. Take into account their wattage requirements and how many devices will be connected at once.

What wattage Inverter should I use?

Match the inverter's continuous wattage rating to the battery's discharge capacity. For a 12V 200Ah battery (2.4kWh), a 2000W inverter is ideal. Formula: Inverter Wattage  $\leq$  (Battery Voltage  $\times$  Ah Rating  $\times$  0.8). Factor in surge power needs but prioritize sustained loads.

What size inverter do I Need?

A general rule is to choose an inverter that can handle at least 1.5 times the total wattage of your devices. For example, if your devices require 800 watts, a 1200-watt inverter would be suitable. Calculating Inverter Size



## How big an inverter should I use for a 12v200



### [What Size Inverter Do I Need for a 200Ah ...](#)

Apr 13, 2024 · How do you determine the right size inverter for a 200Ah lithium battery? The ideal inverter size depends on your power needs and ...

### [Can an Inverter Be Too Big for Your Battery System?](#)

FAQ Can I use a 3000W inverter with a 200Ah battery? Only if it's a 24V lithium system. For 12V lead-acid,  $200Ah \times 12V \times 0.5C = 1200W$  max. How long will a 100Ah battery last with a 1000W ...



### [What Size Inverter Do I Need for a 200Ah Lithium Battery](#)

Apr 13, 2024 · How do you determine the right size inverter for a 200Ah lithium battery? The ideal inverter size depends on your power needs and the battery's voltage and capacity. For a 12V ...



### [Which Inverter is Suitable for a 200Ah Battery?](#)

Apr 23, 2025 · The 200Ah battery is large enough to handle various types of inverters, typically ranging from 850 VA to 2000W, depending on your ...



### [What Size of Inverter Is Good for a 200Ah Battery?](#)

The best inverter size for a 200Ah battery depends on the system voltage and your power needs. A 12V 200Ah battery typically pairs well with a 1000W-2000W inverter, while a 24V setup can ...



### [What Size Inverter Can I Run Off a 200Ah ...](#)

Aug 20, 2025 · You can run an inverter rated between 1500W and 2400W off a 200Ah lithium battery depending on voltage and usage. Typically, a 12V ...



### [Which Inverter is Suitable for a 200Ah Battery?](#)

Apr 23, 2025 · The 200Ah battery is large enough to handle various types of inverters, typically ranging from 850 VA to 2000W, depending on your power requirements and the type of ...





### [What Size Inverter Can I Run Off a 200Ah Lithium Battery?](#)

Aug 20, 2025 · You can run an inverter rated between 1500W and 2400W off a 200Ah lithium battery depending on voltage and usage. Typically, a 12V 200Ah battery supports up to about ...



### [Choosing the Best Inverter Size for a 200Ah ...](#)

Jun 7, 2025 · To calculate the wire and fuse size needed for the inverter you would take the inverter wattage, divide by 12V, then divide by 85% ...

### [What Size Inverter Do I Need for a 200AH Battery?](#)

Dec 15, 2023 · To determine the appropriate inverter size for a 200AH battery, you need to consider the total wattage of the devices you plan to power. A general rule is to choose an ...



### **Choosing the Right Inverter Size for a 200Ah Lithium Battery**

When selecting an inverter for a 200Ah lithium battery, it is important to understand your energy needs and consider factors such as power consumption, inverter types, and installation ...



### [What size of 1000W inverter is good for a 12 volt 200Ah ...](#)

Sep 20, 2024 · The matching of inverter and battery is particularly important in many scenarios, especially when you plan to use a 12 volt 200Ah battery to power the inverter. How to choose ...

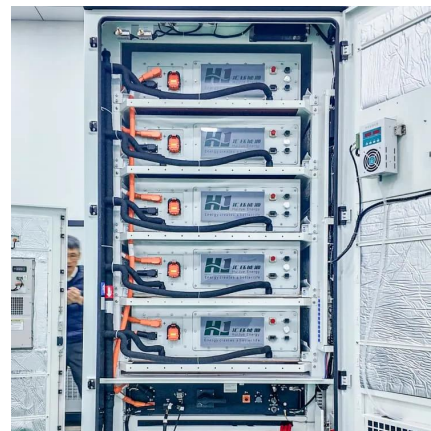


### [Choosing the Best Inverter Size for a 200Ah Lithium Battery](#)

Jun 7, 2025 · To calculate the wire and fuse size needed for the inverter you would take the inverter wattage, divide by 12V, then divide by 85% efficiency.

### [Best Inverter for 200Ah Battery: A Complete Guide 2025](#)

Apr 16, 2025 · Find the best inverter for your 200Ah battery setup. Compare top models, get expert tips, and shop reliable inverters for RVs, homes, and off-grid use.



## Contact Us

---

For technical specifications, project proposals, or partnership inquiries, please visit:  
<https://www.eiei.pl>



## Scan QR Code for More Information



<https://www.eiei.pl>