

# How big an inverter should I use for 72v20ah





## Overview

---

Generally, the inverter should be sized to match about 80-100% of your system's DC rating. For example, if you have a 5 kW solar array, you might choose a 5 kW inverter. What size inverter do I Need?

Inverters come in different sizes starting from as little as 125 watts. The typical inverter sizes used for residential and commercial applications are between 1 and 10kW with 3 and 5kW sizes being the most common. With such an array of options, how do you find the right size for you?

An inverter works best when close to its capacity.

What are the different solar inverter sizes?

Solar generators range in size from small generators for short camping trips to large off-grid power systems for a boat or house. Consequently, inverter sizes vary greatly. During our research, we discovered that most inverters range in size from 300 watts up to over 3000 watts. In this article, we guide you through the different inverter sizes.

What size inverter for a 12V 200Ah battery?

For a 12V 200Ah battery (2.4kWh), a 2000W inverter is ideal. Formula: Inverter Wattage  $\leq$  (Battery Voltage  $\times$  Ah Rating  $\times$  0.8). Factor in surge power needs but prioritize sustained loads. Always check the battery's max discharge rate (C-rate) to avoid exceeding safe limits. When sizing for 24V or 48V systems, recalculate using the higher voltage.

How many Watts should a solar panel inverter have?

For example, if your total solar panel wattage is 5,000 watts, you would ideally choose an inverter with a continuous power rating of around 5,000 watts and a peak power rating of at least 6,000 watts (5,000 watts + 20% buffer). How to Calculate Your Solar Panel Size?



## How big an inverter should I use for 72v20ah

---



### [Solar Inverter & Battery Sizing Calculator](#)

Apr 30, 2025 · Choosing the correct inverter and battery size is crucial for every microgrid system. Our Solar Inverter and Battery Sizing Calculator ...

### [Inverter Wire Size Calculator Online](#)

Mar 26, 2024 · An Inverter Wire Size Calculator is a specialized tool designed to help you determine the optimal wire size needed for your ...



### [How to Choose the Right Size Solar Inverter: ...](#)

Jul 15, 2025 · Wondering what size solar inverter do I need for your solar system? This guide walks you through calculating inverter size based on ...

## How Big of an Inverter Can My Car Handle: Explained with Expert Tips

Apr 1, 2023 · How Big of an Inverter Can My Car Handle: Understanding Your Car's Electrical



System To determine the ...



### [How To Size A Solar Inverter in 3 Easy Steps](#)

What size solar inverter should you use for your system? In this guide we share how to correctly size a solar inverter in 3 steps.

### [How to Calculate Solar Panel, Battery, and ...](#)

Jun 3, 2024 · How to Calculate Your Solar Inverter Size? Inverters have two important power ratings: continuous power rating and peak power rating. ...



### [Inverter Size Calculator - self2solar](#)

Feb 20, 2025 · Determining the Inverter Size to Match the Solar Panel Array Determining the correct inverter size depends on your solar array's capacity and your household's power ...



### [What Size Inverter You Need \(Calculations + Battery\)](#)

Oct 6, 2022 · The size of the inverter required will be determined by the total wattage of the appliances you need to operate and the time they need to run. You also need to add a bit ...



### [Can an Inverter Be Too Big for Your Battery System?](#)

FAQ Can I use a 3000W inverter with a 200Ah battery? Only if it's a 24V lithium system. For 12V lead-acid,  $200Ah \times 12V \times 0.5C = 1200W$  max. How long will a 100Ah battery last with a 1000W ...

### [What Size Inverter You Need \(Calculations + Battery\)](#)

Oct 6, 2022 · The size of the inverter required will be determined by the total wattage of the appliances you need to operate ...



### [Solar Inverter & Battery Sizing Calculator](#)

Apr 30, 2025 · Choosing the correct inverter and battery size is crucial for every microgrid system. Our Solar Inverter and Battery Sizing Calculator provides a simple and user-friendly solution.



### How big an inverter should I use for a 300w solar panel

Inverter Size Needed To Run A TV And Lights. Generally, a 300-watt inverter should be enough to run your TV and household lights. More specifically, a 300W inverter is big enough to run an ...

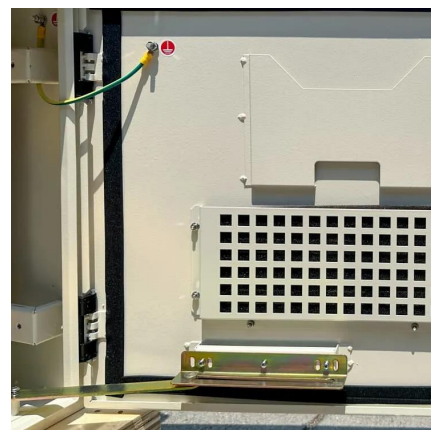


### INVERTER SIZE CALCULATOR

How big an inverter should I use for a 300w solar panel For a 300 watt solar panel, you need anywhere between 500-1500 watt capacity inverter. However, the exact size you need will ...

### HOW BIG SHOULD A SOLAR INVERTER BE?

How big an inverter should I use for a 300w solar panel For a 300 watt solar panel, you need anywhere between 500-1500 watt capacity inverter. However, the exact size you need will ...



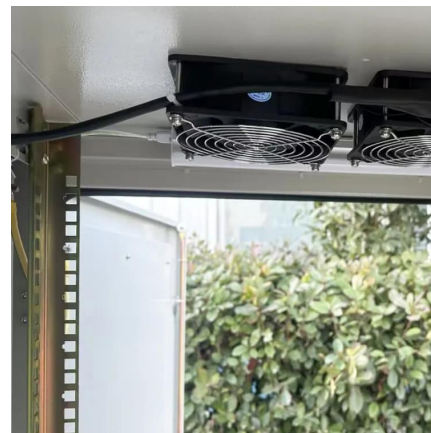


## [The Only Inverter Size Chart You'll Ever Need](#)

Sep 25, 2023 · We created a comprehensive inverter size chart to help you select the correct inverter to power your appliances. The need for an inverter size chart first became apparent ...

## [The Only Inverter Size Chart You'll Ever Need](#)

How to Determine What Size Inverter I Need? What Are The Two Types of Power loads? Inverter Size Chart What Will A 300W Inverter Run? What Will A 500W Inverter Run? What Will A 700W Inverter Run? What Will A 1000W Inverter Run? What Will A 1500W Inverter Run? What Will A 2000W Inverter Run? What Will A 3000W Inverter Run? Before we go any further, we highly recommend that you choose a pure sine wave inverter. This type of inverter delivers high-quality electricity, similar to your utility company. This way, none of your appliances run the risk of being damaged. Now, when it comes to sizing your inverter, you always need to check your appliances' wattage and ensure t See more on [climatebiz redwaybattery](#)



## **What Size Inverter Do I Need for a 72V 200Ah ...**

Oct 9, 2024 · To determine the size of the inverter needed for a 72v 200Ah lithium battery, consider the total wattage requirements of the devices you ...

## [How big an inverter should I use for a 10KW ...](#)

To calculate the ideal inverter size for your solar PV system, you should consider the total wattage



of your solar panels and the specific conditions of your installation site. The general rule is to ...

### [How to Calculate Solar Panel, Battery, and Inverter Size](#)

Jun 3, 2024 · How to Calculate Your Solar Inverter Size? Inverters have two important power ratings: continuous power rating and peak power rating. The continuous power rating is the ...



### **How big an inverter should I use for a 12kw photovoltaic ...**

Which solar inverter should I Choose? The choice between a single-phase or three-phase inverter will depend on the size of your solar array and your electrical service. Generally, single ...

### [Calculate Battery Size For Any Size Inverter \(Using Our ...](#)

Mar 3, 2023 · So I have made it easy for you, use the calculator below to calculate the battery size for 200 watt, 300 watt, 500 watt, 1000 watt, 2000 watt, 3000 watt, 5000-watt inverter





### [Inverter Size Calculator - self2solar](#)

Feb 20, 2025 · Determining the Inverter Size to Match the Solar Panel Array Determining the correct inverter size depends on your solar array's ...

### **How to Choose the Right Size Solar Inverter: Step-by-Step ...**

Jul 15, 2025 · Wondering what size solar inverter do I need for your solar system? This guide walks you through calculating inverter size based on panel capacity, power usage, and safety ...



### **What Size Inverter Do I Need for a 72V 200Ah Lithium Battery?**

Oct 9, 2024 · To determine the size of the inverter needed for a 72v 200Ah lithium battery, consider the total wattage requirements of the devices you plan to run. Take into account the ...

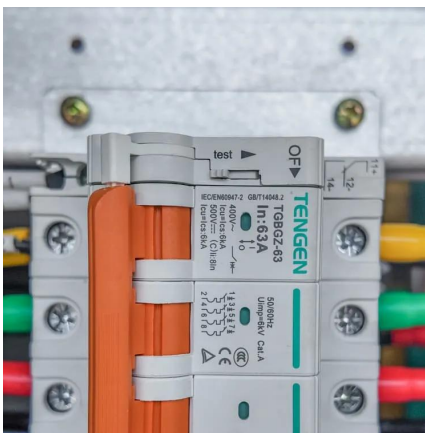
### [What Will An Inverter Run & For How Long?](#)

Mar 3, 2023 · I saw on many forums that most people are confused about what they can run on their 1000,1500,2000,3000, & 5000-watt inverter ...



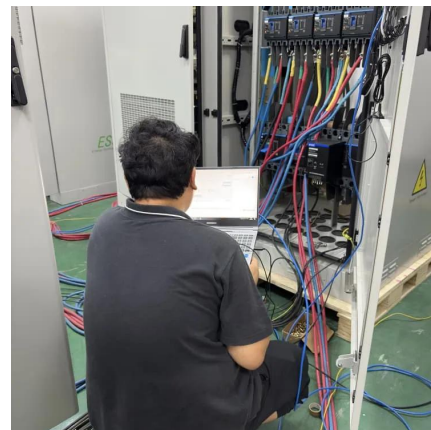
### [Calculate Battery Size For Any Size Inverter ...](#)

Mar 3, 2023 · So I have made it easy for you, use the calculator below to calculate the battery size for 200 watt, 300 watt, 500 watt, 1000 watt, ...



### [SOLAR PV INVERTER SIZING COMPLETE GUIDE](#)

How big an inverter should I use for a 300w solar panel For a 300 watt solar panel, you need anywhere between 500-1500 watt capacity inverter. However, the exact size you need will ...



## Contact Us

For technical specifications, project proposals, or partnership inquiries, please visit: <https://www.eiei.pl>



## Scan QR Code for More Information



<https://www.eiei.pl>