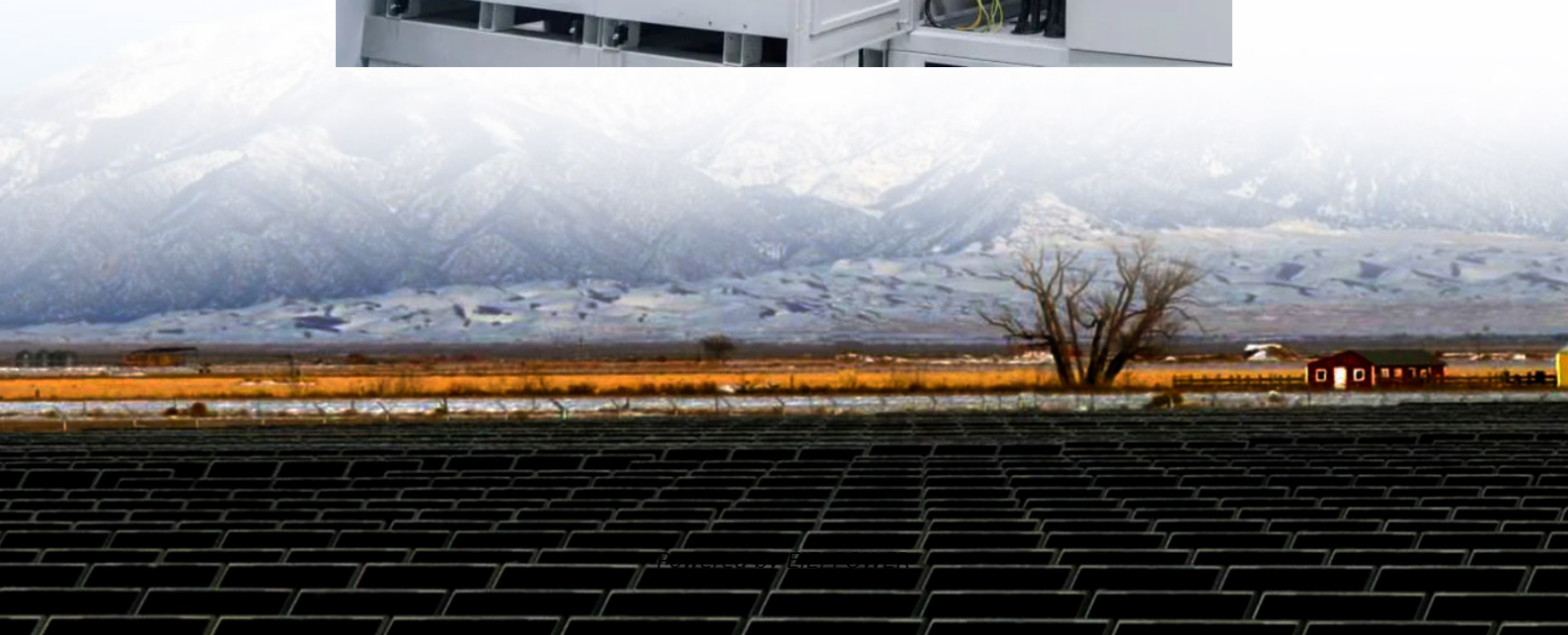


# How big an inverter can a 12v32ah bring





## Overview

---

What size inverter for a 12V 200Ah battery?

For a 12V 200Ah battery (2.4kWh), a 2000W inverter is ideal. Formula: Inverter Wattage  $\leq$  (Battery Voltage  $\times$  Ah Rating  $\times$  0.8). Factor in surge power needs but prioritize sustained loads. Always check the battery's max discharge rate (C-rate) to avoid exceeding safe limits. When sizing for 24V or 48V systems, recalculate using the higher voltage.

Can a 12 volt car battery support a high power inverter?

Typically, a 12-volt car battery can support an inverter with a power range of about 150 watts to 1500 watts. Please note, however, that car batteries are not suitable for driving high power inverters for extended periods of time, which may cause damage to the battery.

What voltage should a 12V inverter run on?

The input voltage of the inverter should match the battery voltage. (For example 12v battery for 12v inverter, 24v battery for 24v inverter and 48v battery for 48v inverter Summary What Will An Inverter Run & For How Long?

.

How much inverter power can a car battery support?

There is a theoretical limit to the amount of inverter power that can be supported by an automotive battery. Theoretically, the maximum supported inverter power can be calculated by multiplying the battery capacity (Ah) by the battery voltage (V) multiplied by the discharge multiplier (C-rate).



## How big an inverter can a 12v32ah bring

---



### [Calculate Battery Size For Any Size Inverter ...](#)

Mar 3, 2023 · So I have made it easy for you, use the calculator below to calculate the battery size for 200 watt, 300 watt, 500 watt, 1000 watt, ...

### [How Much Battery Capacity Do You Need With a 12V Inverter?](#)

Jun 14, 2025 · Discover how to calculate the ideal battery capacity for a 12V inverter using simple math, practical examples, and money-saving tips for daily power.



### [How big an inverter does a 12v/32ah come with?](#)

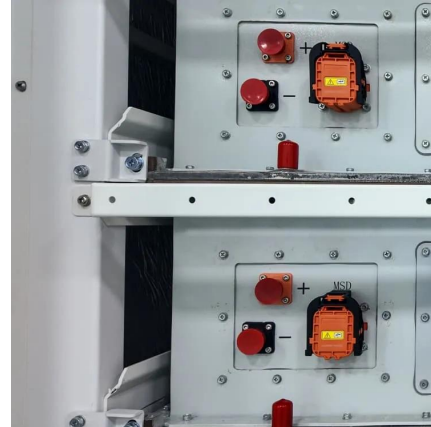
Solar generators range in size from small generators for short camping trips to large off-grid power systems for a boat or house. Consequently, inverter sizes vary greatly. During our research, ...

### [How Big of an Inverter Can My Car Battery Handle?](#)

Mar 26, 2025 · Calculating inverter demand sizing There is a theoretical limit to the amount of inverter power that can be supported by an automotive battery. Theoretically, the maximum



...



### [How Big of an Inverter Can My Car Battery ...](#)

Mar 26, 2025 · Calculating inverter demand sizing There is a theoretical limit to the amount of inverter power that can be supported by an automotive ...

### [What size inverter can you run off a car battery?](#)

Aug 11, 2025 · A typical 12-volt car battery can safely support an inverter ranging from about 150 watts up to 600 watts for regular use without harming the battery. While it is technically ...



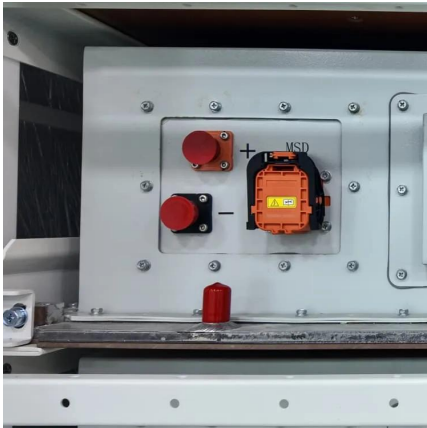
### [How Big of an Inverter Can My Car Handle: Explained with ...](#)

Apr 1, 2023 · How Big of an Inverter Can My Car Handle: Understanding Your Car's Electrical System To determine the maximum size of an inverter that your car can handle, you need to ...



## [Calculate Battery Size for Inverter Calculator](#)

Mar 14, 2025 · The Calculate Battery Size for Inverter Calculator helps you determine the optimal battery capacity needed to support your inverter system. By inputting critical parameters such ...

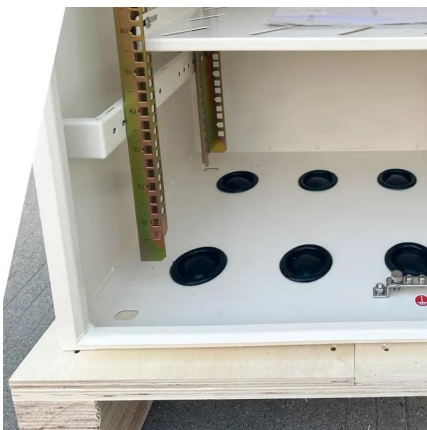


## [Calculate Battery Size for Inverter Calculator](#)

Mar 14, 2025 · The Calculate Battery Size for Inverter Calculator helps you determine the optimal battery capacity needed to support your inverter ...

## **How Big of an Inverter Can My Car Handle: Explained with Expert Tips**

Apr 1, 2023 · How Big of an Inverter Can My Car Handle: Understanding Your Car's Electrical System To determine the ...



## [Can a Battery Be Too Big for an Inverter?](#)

Dec 12, 2023 · Yes, a battery can be too big for an inverter, leading to inefficiencies and potential safety issues. Oversized batteries may not discharge correctly or could exceed the inverter's ...



## [Calculate Battery Size For Any Size Inverter \(Using Our ...](#)

Mar 3, 2023 · So I have made it easy for you, use the calculator below to calculate the battery size for 200 watt, 300 watt, 500 watt, 1000 watt, 2000 watt, 3000 watt, 5000-watt inverter



## [How Big of an Inverter Can My Car Handle](#)

Jun 20, 2023 · Conclusion The size of the inverter that a car can handle is determined by the amount of power that the car's battery can provide. The typical 12 volt car battery can provide ...

## [Can an Inverter Be Too Big for Your Battery System?](#)

How to Calculate the Right Inverter Size for Your Battery Match the inverter's continuous wattage rating to the battery's discharge capacity. For a 12V 200Ah battery (2.4kWh), a 2000W inverter ...



## [How Big of an Inverter Can My Car Handle](#)

Jun 20, 2023 · Conclusion The size of the inverter that a car can handle is determined by the amount of power that the car's battery can provide. ...



## Contact Us

---

For technical specifications, project proposals, or partnership inquiries, please visit:  
<https://www.eiei.pl>

### Scan QR Code for More Information



<https://www.eiei.pl>