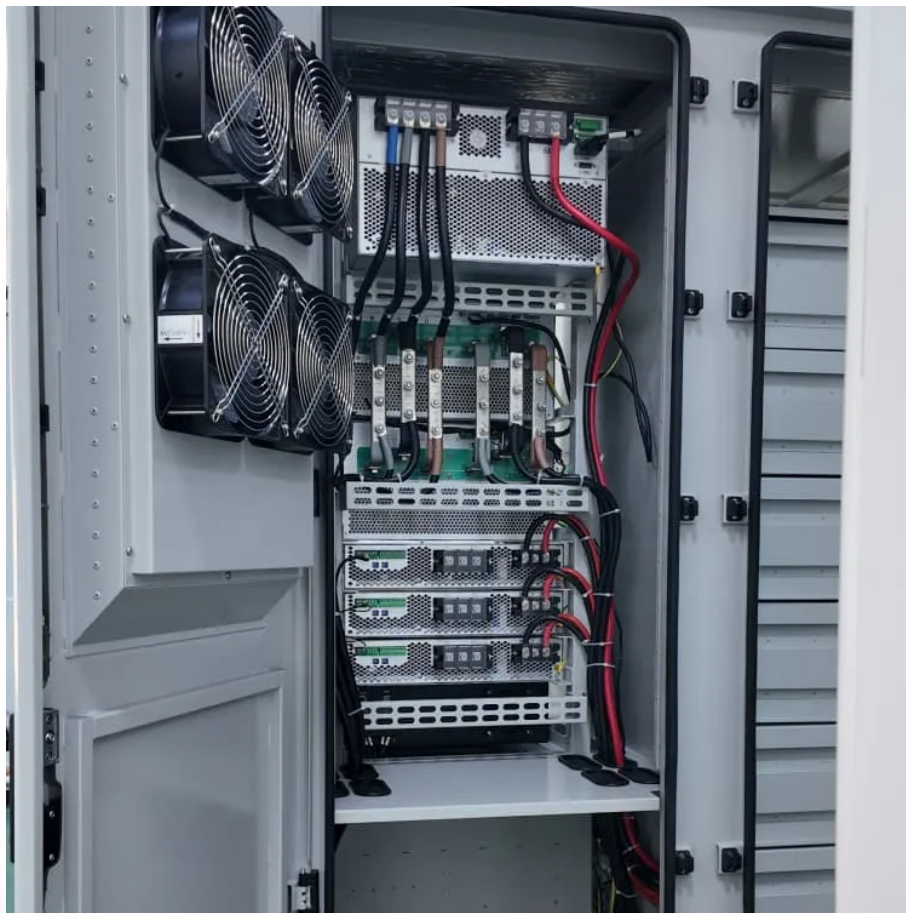


How big a battery does a 300w inverter use





Overview

With a 24-volt battery, you can safely run around 2,000 watts. With a 48-volt battery, you can handle up to 5,000 watts. ☐☐ For a 3000W inverter, a 48V battery system is the best choice. What is the recommended battery size for an inverter?

Interpreting Results: Once you input the required data, the calculator will generate the recommended battery size in ampere-hours (Ah). For instance, if your power consumption is 500 watts, the usage time is 4 hours, and the inverter efficiency is 90%, the calculator might suggest a battery size of approximately 222 Ah.

How much battery should a 500 watt inverter use?

For instance, if your power consumption is 500 watts, the usage time is 4 hours, and the inverter efficiency is 90%, the calculator might suggest a battery size of approximately 222 Ah. Practical Tips: Ensure all input values are accurate to avoid skewed results.

How much battery do I need to run a 3000-watt inverter?

You would need around 24v 150Ah Lithium or 24v 300Ah Lead-acid Battery to run a 3000-watt inverter for 1 hour at its full capacity Here's a battery size chart for any size inverter with 1 hour of load runtime Note! The input voltage of the inverter should match the battery voltage.

Why should you use the calculate battery size for inverter calculator?

Using the Calculate Battery Size for Inverter Calculator can significantly streamline your power management process. This tool is particularly beneficial in scenarios where precise power estimation is critical, such as designing renewable energy systems, ensuring backup power in off-grid locations, or optimizing battery usage for cost efficiency.



How big a battery does a 300w inverter use



How to Calculate the Right Battery Size for Your Inverter ...

Calculating the correct battery size ensures that your inverter system can meet your power needs without leaving you in the dark during outages. An undersized battery may not provide enough

...

[How much power does an inverter draw? - Help Centre](#)

The current draw from a 12V or 24V battery when running an inverter depends on the actual load, not the inverter size. A quick rule is to divide watts by 10 for 12V systems or 20 for 24V

...



[Calculate Battery Size for Inverter Calculator](#)

Mar 14, 2025 · The Calculate Battery Size for Inverter Calculator helps you determine the optimal battery capacity needed to support your inverter ...



[What Inverter Size Do I Need to Run a Hair ...](#)

Solar panels charge the battery bank so you can use it to power the inverter and your hair dryer. If you want to use solar panels to run a hair dryer, it ...



[Inverter Amp Draw Calculator](#)

Feb 13, 2024 · The current drawn by a 1500-watt inverter for a 48 V battery bank is 37.5 amps. as per the inverter amp draw calculator.



[What Size Battery For 300w Solar Panel?](#)

May 25, 2023 · When calculating the size of battery to use with a 300 watt solar panel, it is important to consider the voltage of the panel in addition to its rated wattage. In general, most ...



How to Determine Battery Sizes when using Pure Sine Wave Inverters

Oct 8, 2025 · How do you power all your electronics with no outlets available? Batteries are the answer! They can store plenty of energy depending on their capacity, and by utilizing DC-to ...





[What Size Charge Controller For a 300 Watt ...](#)

As long as your 300 watt solar panel and battery are matched, either 12V or 24V, you can use a PWM charge controller. An MPPT controller can ...

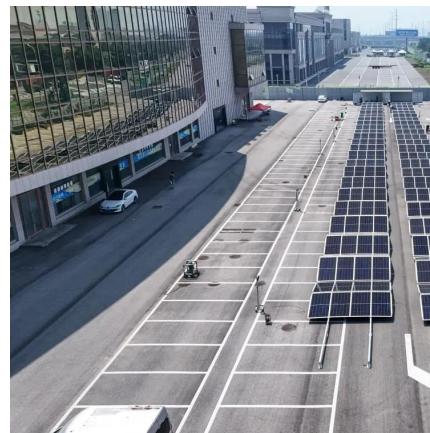


[Solar Panel Size Calculator - Charge Your ...](#)

Apr 9, 2023 · Use our solar panel size calculator to find out the ideal solar panel size to charge your lead acid or lithium battery of any capacity and ...

[What Battery Size for a 300-Watt Power Inverter](#)

Sep 16, 2025 · A 300-watt inverter is capable of converting DC (direct current) power from a battery or other power source into AC (alternating current) power that can be used to run small ...



[Choosing The Right Inverter Size For ...](#)

Jan 5, 2024 · Learn how to choose the correct inverter size for charging drill batteries to save time and money. Discover what factors to consider and ...



[How to Calculate the Right Battery Size for ...](#)

Calculating the correct battery size ensures that your inverter system can meet your power needs without leaving you in the dark during outages.

...



Calculating power needed for laptop operating off a 12V battery ...

Feb 9, 2023 · I would attach a Bistek 300W power inverter to the battery to convert DC to AC and plug the laptop into the AC adapter of the power inverter. The battery is an ExpertPower 12v ...

[Calculate Battery Size For Any Size Inverter \(Using Our ...](#)

Mar 3, 2023 · Pairing a right size capacity battery for an inverter can be a bit confusing for most the beginners So I have made it easy for you, use the calculator below to calculate the battery ...



[What Size Battery For 300w Solar Panel?](#)

May 25, 2023 · When calculating the size of battery to use with a 300 watt solar panel, it is important to consider the voltage of the panel in addition ...



[How Many Batteries for a 3000W Inverter? Complete Guide](#)

Sep 24, 2025 · Find out how many batteries you need for a 3000W inverter. Compare lithium vs lead-acid setups, sizing, and the best battery bank for reliable power.



[Solar Panel And Battery Sizing Calculator](#)

Mar 4, 2025 · A Solar Panel and Battery Sizing Calculator helps you determine the optimal size of solar panels and batteries required to meet ...

[12V Battery Run Time Calculator - Calculator](#)

Mar 9, 2024 · Yes, you can run a 2000 watt inverter on a 12V battery, but the run time will be limited, and you may need multiple batteries for longer usage. How many 12 volt batteries do I ...



[Calculate Battery Size for Inverter Calculator](#)

Mar 14, 2025 · The Calculate Battery Size for Inverter Calculator helps you determine the optimal battery capacity needed to support your inverter system. By inputting critical parameters such ...



[The Only Inverter Size Chart You'll Ever Need](#)

Sep 25, 2023 · Inverter Size Chart We have summarized the appliances that inverters from 300W to 3000W can run depending on their rated maximum power. Note to our readers: Use the ...

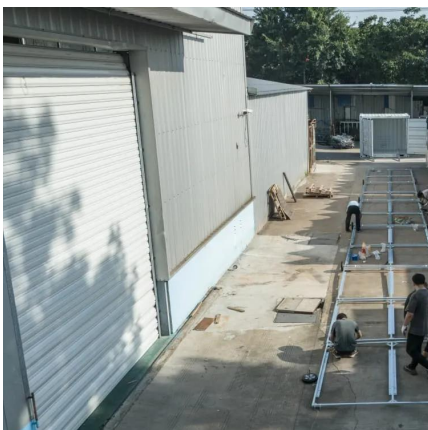


[How to Calculate Battery Size for Inverters of Any Size](#)

Learn how to calculate how much battery power you need to get your inverter up and running with The Inverter Store's handy how-to guide. It works for any size.

[Understanding Battery Capacity and Inverter Compatibility](#)

Aug 20, 2024 · This calculation assumes ideal conditions with no inefficiencies. In reality, factors such as inverter efficiency and battery discharge characteristics might affect the actual run ...



[Battery to Inverter Calculator](#)

Jan 14, 2024 · Calculate the optimal battery size for your inverter with our battery to inverter calculator; find out the required battery capacity for your inverter with our battery power ...



Contact Us

For technical specifications, project proposals, or partnership inquiries, please visit:
<https://www.eiei.pl>

Scan QR Code for More Information



<https://www.eiei.pl>