

# Features of three-phase PWM inverter on the motor side





## Overview

---

What is a 3 phase PWM inverter?

Three-phase PWM inverters have a similar operating principle to single-phase inverters but use six power switches arranged in three legs. The control unit generates three separate PWM signals, one for each phase. These signals are used to control the switching of the IGBTs to produce three-phase AC power.

What is a three phase voltage source inverter (VSI)?

dynamic behavior of the motor during operation.  
2.2 Three-Phase Voltage Source Inverter (VSI)The inverter is responsible for converting the constant D supply into a variable-frequency, variable-amplitude AC output that drives the induction motor. It consists of six I.

What are the different types of PWM inverters?

PWM inverters can be broadly categorized into single-phase and three-phase types, each with distinct structures and applications. Single-phase PWM inverters consist of two main parts, the DC power source and the inverter bridge, typically use a full-bridge configuration consisting of four power switches, usually IGBTs and MOSFETs.

What is a pulse width modulated (PWM) inverter?

system powered by a Pulse Width Modulated (PWM) inverter, using MATLAB as the modeling platform. Induction motors are commonly employed across various industrial sectors due to their durability, cost-effectiveness, and low maintenance. However,



## Features of three-phase PWM inverter on the motor side

---



### [S32K396 Motor Control Kit with 3-Phase ...](#)

Jan 13, 2025 · INTRODUCTION The S32K396 motor control kit with 3-phase PMSM is the newest version of NXP's motor control kits. It creates ...

### [Design and Analysis of a Three-Phase Inverter-Driven ...](#)

Apr 22, 2025 · Abstract This study focuses on the development and simulation of a three-phase induction motor drive system powered by a Pulse Width Modulated (PWM) inverter, using ...



### [PWM management for 3-phase BLDC motor drives using ...](#)

These motors require the control of an inverter stage. In most cases the switching devices are MOSFET transistors or IGBTs and are organized in a three-phase bridge with free-wheeling ...



### [48-V, 10-A, High-Frequency PWM, 3-Phase GaN Inverter ...](#)

Apr 3, 2017 · Low-voltage, high-speed drives and low-inductance brushless motors require higher inverter switching frequencies in the range of 40 kHz to 100 kHz to minimize losses and torque ...



### [What is a PWM Inverter: Types and Applications](#)

Jul 15, 2024 · Explore what is PWM inverter, including single-phase and three-phase types. Learn more about the key advantages of PWM technology, like Hinen inverters are used for ...



### [What is a PWM Inverter: Types and ...](#)

Jul 15, 2024 · Explore what is PWM inverter, including single-phase and three-phase types. Learn more about the key advantages of PWM ...



### [Design and Implementation of Three Phase PWM ...](#)

Mar 4, 2021 · Abstract: This paper presents an advanced three phase inverter topology the Z-Source Inverter and its control using microcontroller Atmega 328P. Z-Source Inverter employs ...





### [UG0655: Three-phase PWM User Guide](#)

Jun 12, 2024 · Introduction The three-phase PWM generates carrier based center aligned PWM to trigger the switches of a three-phase inverter. The module also introduces a configurable dead ...



### **Comparative Analysis of Five Different PWM Techniques on Three-Phase**

Feb 1, 2021 · A comparative study of five different PWM techniques of three-phase inverter for best induction motor drive performance is presented here using Simulink simulation.

### [Analysis & Hardware Implementation Of Three-Phase ...](#)

Oct 27, 2025 · Abstract With advances in solid-state power electronic devices and microprocessors, various pulse-width-modulation (PWM) techniques have been developed for ...



### **Three-Phase Inverters Explained: Working, Design, Features ...**

Oct 31, 2025 · A three-phase inverter converts DC into three-phase AC power used in industries, electric vehicles, and renewable energy systems. It ensures steady, balanced, and efficient ...



## [Comparative Analysis of Five Different PWM ...](#)

Feb 1, 2021 · A comparative study of five different PWM techniques of three-phase inverter for best induction motor drive performance is presented ...



## [Advanced Three Phase PWM control using microcontroller.](#)

Oct 15, 2013 · Abstract: This paper presents an advanced three phase inverter topology the Z-Source Inverter and its control using microcontroller 89C52. Z-Source Inverter employs ...

## **CSM\_Inverter\_TG\_E\_1\_1**

Mar 27, 2016 · This type of control, in which the frequency and voltage are freely set, is called pulse width modulation, or PWM. The inverter first converts the input AC power to DC power ...



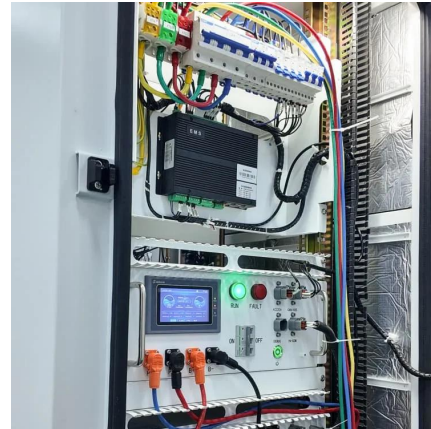
## [3-phase PMSM Motor Control Power Inverter Module](#)

Feb 1, 2024 · The Motor Control PWM eTPU function (PWMM) uses three eTPU channels to generate three PWM output signals or six eTPU channels to generate three complementary ...



## A Novel Hybrid SPWM and SHEPWM based Three Phase Inverter ...

Jul 19, 2024 · In this proposed model, an IGBT based inverter is employed to regulate the speed of a Three Phase Induction Motor (TPIM). The effectiveness of the proposed system is ...



## [48-V Three-Phase Inverter With Shunt-Based In-Line ...](#)

Apr 7, 2017 · Description The TIDA-00913 reference design realizes a 48-V/10-A three-phase GaN inverter with precision in-line shunt-based phase current sensing for accurate control of ...

## [What is a Three-Phase Inverter? , inverter](#)

Sep 17, 2024 · Modular design is a key direction for future three-phase inverter design. By dividing inverters into multiple independent modular ...



## [Comparison of three-phase inverter modulation ...](#)

Jun 22, 2024 · The output voltage of the three-phase inverter is intended to be amplified, and its harmonic content is intended to be reduced through the application of PWM modulation [5]. In ...



## Introduction

Dec 22, 2023 · results in conspicuous problems as increased motor losses, acoustic noise in load, insulation degradation due to voltage surges and electromagnetic interference effects (EMI). ...



## Contact Us

---

For technical specifications, project proposals, or partnership inquiries, please visit:  
<https://www.eiei.pl>

**Scan QR Code for More Information**



<https://www.eiei.pl>