

# Energy storage power station voltage level





## Overview

---

Can a battery storage system increase power system flexibility?

sive jurisdiction.—2. Utility-scale BESS system description— Figure 2. Main circuit of a BESS Battery storage systems are emerging as one of the potential solutions to increase power system flexibility in the presence of variable energy resources, suc.

What is a 4 MWh battery storage system?

4 MWh BESS includes 16 Lithium Iron Phosphate (LFP) battery storage racks arranged Rated power 2 MW in a two-module containerized architecture; racks are coupled inside a DC combiner panel. Power is converted from direct current (DC) to alternating current (AC) by tw.

What is the value of internal battery resistance?

to the ratio between the full-charge voltage at battery terminals and the internal battery resistance. The value of the internal resistance depends on the cell's geometry and construction and on the operating conditions. The common resistance range is 0.5-10 mΩ/cell. From a safety perspective.

What is F pcs100 ESS battery major event?

f PCS100 ESS Battery major event (ie., undervoltage, overvoltage, over-temperature, ectors CS run, warn t-breaker, equipped with an Ekip Hi-Touch trip unit, provides all measurements required: Ekip Hi-Touch Th



## Energy storage power station voltage level

---

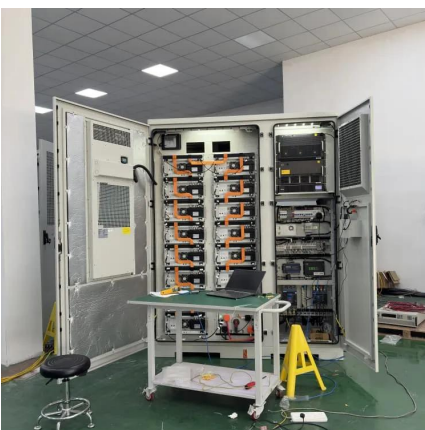


### How much voltage does the energy storage station have?

May 26, 2024 · In closing, understanding the voltage levels in energy storage stations is vital for their effective operation and integration within broader energy frameworks. Voltage ranges, ...

### Voltage level on the low voltage side of the energy ...

What are battery storage power stations? Battery storage power stations are usually composed of batteries, power conversion systems (inverters), control systems and monitoring equipment. ...



### Energy storage station access voltage level

Why do energy storage stations have different voltage levels? The situation is further complicated by electrochemical-energy storage stations that operate at different voltage levels, hindering ...

### How many volts is the voltage of a small

...

Jun 3, 2024 · The voltage of a small energy storage power station typically ranges from 100 to 800 volts, depending on specific design and ...



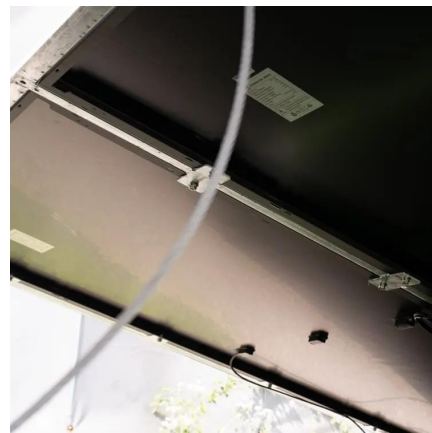
### [Guide to Industrial and Commercial Energy ...](#)

Jan 13, 2025 · The selection of the access voltage level for industrial and commercial energy storage systems is a comprehensive decision-making ...



### **How many volts is the voltage of a small energy storage power station**

Jun 3, 2024 · The voltage of a small energy storage power station typically ranges from 100 to 800 volts, depending on specific design and application, 2. Various configurations exist that ...



### [Energy storage station capacity and grid-connected ...](#)

What is a battery energy storage system? A battery energy storage system (BESS) is an electrochemical device that charges from the grid or a power plant and then discharges that ...





### Recommended input-voltage of Container ...

The selection of the input-voltage, transformer, and converter power capacity of a large container energy storage power station, depends on several ...



### **Recommended input-voltage of Container energy storage power station**

The selection of the input-voltage, transformer, and converter power capacity of a large container energy storage power station, depends on several factors, including the size of the plant, the ...



### **Understanding Voltage in Energy Storage Power Stations: A ...**

Ever wondered why energy storage power stations often use 10kV voltage for grid connection? It's like choosing the right gear for your car - too low and you'll stall, too high and you'll waste fuel. ...



### **Voltage Levels in Energy Storage Power Stations: What You ...**

The answer often lies in energy storage power station voltage level configurations. According to BloombergNEF's 2023 energy storage report, 38% of delayed renewable projects face voltage ...





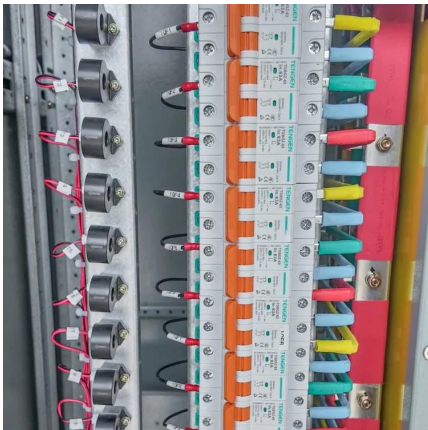
## [Guide to Industrial and Commercial Energy Storage ...](#)

Jan 13, 2025 · The selection of the access voltage level for industrial and commercial energy storage systems is a comprehensive decision-making process. It involves considering factors ...



## [Utility-scale battery energy storage system \(BESS\)](#)

Mar 21, 2024 · Introduction Reference Architecture for utility-scale battery energy storage system (BESS) This documentation provides a Reference Architecture for power distribution and ...



## Contact Us

---

For technical specifications, project proposals, or partnership inquiries, please visit: <https://www.eiei.pl>

[Scan QR Code for More Information](#)



<https://www.eiei.pl>