

Energy storage power station module voltage





Overview

Most grid operators require storage systems to operate within strict voltage parameters (typically 11kV-33kV for medium-scale installations).What is the voltage range of energy storage power station?

The range of abnormal voltage is from 0 to 3.39 V, and the temperature range is from 22 to 28 °C. The current jump is caused by the switching between charging and discharging of the energy storage power station. The SOC ranges from 17.5 to 86.6%.

What is connection form of collection system of battery energy storage power station?

Connection form of collection system of battery energy storage power station
The energy storage system is mainly composed of energy storage battery pack, power conversion system (PCS), battery management system (BMS), battery monitoring system (MNS) and other subsystems .

Why do energy storage power stations need a reliable electrical collection system?

In addition to being affected by the external operating environment of storage system, the reliability of its internal electrical collection system also plays a decisive role in the safe operation of energy storage power station.

What is the capacity of battery energy storage system?

Due to its superior flexibility and regulation capacity, the battery energy storage system is currently planned and invested in large-scale construction, such as Dalian 200 MW/800 MWh liquid flow battery energy storage power station , Jiangsu Province has built user-side energy storage stations with a total capacity of 125 MW/787 MWh .



Energy storage power station module voltage



Technologies and economics of electric energy storages in power ...

Nov 19, 2021 · As fossil fuel generation is progressively replaced with intermittent and less predictable renewable energy generation to decarbonize the power system, Electrical energy ...

[Energy Storage Technologies for Modern Power Systems: A ...](#)

May 9, 2023 · Power systems are undergoing a significant transformation around the globe. Renewable energy sources (RES) are replacing their conventional counterparts, leading to a ...



[Optimal Design of High-Voltage Cascaded Energy Storage ...](#)

Apr 9, 2025 · With the expansion of the grid-connected scale of new energy power generation, the requirements of the power grid for battery energy storage power stations are constantly ...



[Battery Energy Storage System Components](#)

2 days ago · Battery Management System (BMS)
Every lithium-based energy storage system needs a Battery Management System (BMS), which ...



A reliability review on electrical collection system of battery energy

Nov 1, 2021 · In addition to being affected by the external operating environment of storage system, the reliability of its internal electrical collection system also plays a decisive role in the ...



Thermal runaway and explosion propagation ...

Analyzing the thermal runaway behavior and explosion characteristics of lithium-ion batteries for energy storage is the key to effectively prevent ...



China's Largest Grid-Forming Energy Storage Station ...

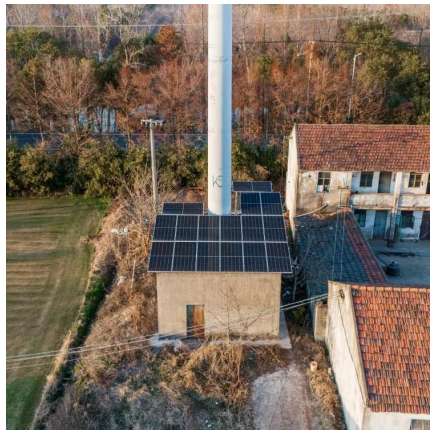
Apr 9, 2024 · On March 31, the second phase of the 100 MW/200 MWh energy storage station, a supporting project of the Ningxia Power's East Ningxia Composite Photovoltaic Base Project ...





Energy storage power station module voltage

The range of abnormal voltage is from 0 to 3.39 V, and the temperature range is from 22 to 28 °C. The current jump is caused by the switching between charging and discharging of ...



How many volts is the voltage of a small ...

Jun 3, 2024 · The voltage of a small energy storage power station typically ranges from 100 to 800 volts, depending on specific design and ...

Energy Storage-SVOLT

Based on the 222Ah Fly-stacking cell and a 1P liquid-cooled energy storage system, it offers extreme temperature control and is designed for GWh-level energy storage power stations.



Voltage abnormality prediction method of lithium-ion energy storage power

Sep 13, 2024 · Accurately detecting voltage faults is essential for ensuring the safe and stable operation of energy storage power station systems. To swiftly identify operational faults in ...



Understanding Voltage in Energy Storage Power Stations: A ...

Ever wondered why energy storage power stations often use 10kV voltage for grid connection? It's like choosing the right gear for your car - too low and you'll stall, too high and you'll waste fuel. ...



[Energy storage systems design resources , TI](#)

Nov 13, 2025 · Build a more sustainable future by designing safer, more accurate energy storage systems that store renewable energy to reduce cost and optimize use. With advanced battery ...

[Voltage abnormality prediction method of lithium-ion ...](#)

Sep 13, 2024 · Zhibo Rao 1, Jiahui Wu 1*, Guodong Li 2 & Haiyun Wang 1 Accurately detecting voltage faults is essential for ensuring the safe and stable operation of energy storage power ...



[Energy Storage System](#)

3 days ago · CATL's energy storage systems provide users with a peak-valley electricity price arbitrage mode and stable power quality management. CATL's electrochemical energy ...



[Utility-scale battery energy storage system \(BESS\)](#)

Mar 21, 2024 · Introduction Reference Architecture for utility-scale battery energy storage system (BESS) This documentation provides a Reference Architecture for power distribution and ...

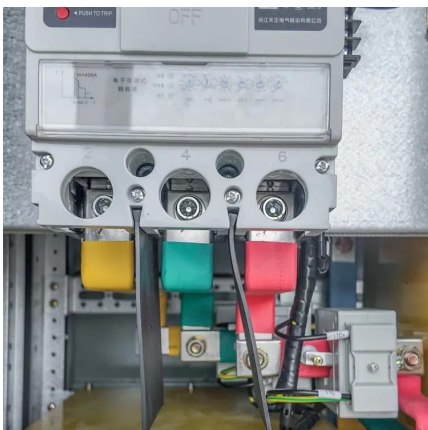
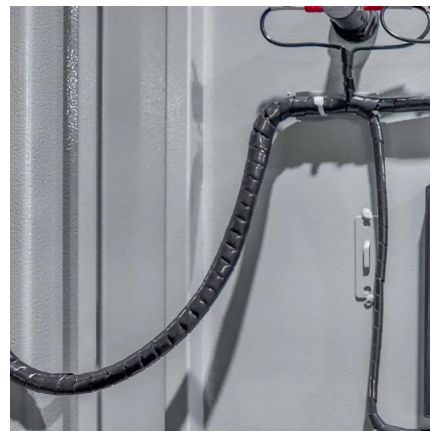


Study on Modeling Energy Storage Battery Module Based on ...

Apr 23, 2025 · Parameter estimation of battery module in energy storage stations is fundamental for battery management and fault diagnosis. This paper proposes a battery module model ...

How many volts is the voltage of a small energy storage power station

Jun 3, 2024 · The voltage of a small energy storage power station typically ranges from 100 to 800 volts, depending on specific design and application, 2. Various configurations exist that ...



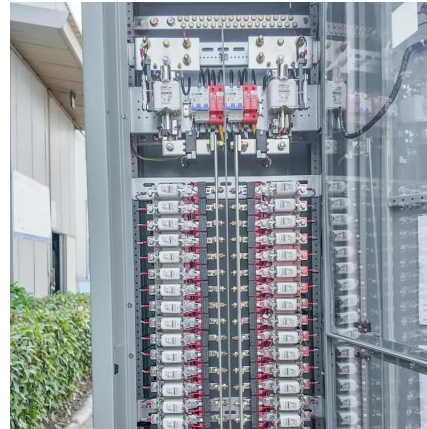
[Portable High-Power Energy Storage System: 104kWh...](#)

XIAOFU Portable Power Station Battery Module Alt: XIAOFU 104kWh LiFePO4 battery module, the safe and efficient core of energy storage Dual-Voltage Output Design: Seamless Switching ...



Research on short-circuit fault-diagnosis strategy of lithium ...

Nov 1, 2023 · The public has become increasingly anxious about the safety of large-scale Li-ion battery energy-storage systems because of the frequent fire accidents in energy-storage ...



Study on Modeling Energy Storage Battery Module Based on ...

Apr 23, 2025 · Abstract Parameter estimation of battery module in energy storage stations is fundamental for battery management and fault diagnosis. This paper proposes a battery ...

Voltage Levels in Energy Storage Power Stations: What You ...

The answer often lies in energy storage power station voltage level configurations. According to BloombergNEF's 2023 energy storage report, 38% of delayed renewable projects face voltage ...



Contact Us

For technical specifications, project proposals, or partnership inquiries, please visit:
<https://www.eiei.pl>



Scan QR Code for More Information



<https://www.eiei.pl>