

# Energy storage power station is industrial land





## Overview

---

What is Ningxia power's energy storage station?

On March 31, the second phase of the 100 MW/200 MWh energy storage station, a supporting project of the Ningxia Power's East Ningxia Composite Photovoltaic Base Project under CHN Energy, was successfully connected to the grid. This marks the completion and operation of the largest grid-forming energy storage station in China.

What is the largest grid-forming energy storage station in China?

This marks the completion and operation of the largest grid-forming energy storage station in China. The photo shows the energy storage station supporting the Ningdong Composite Photovoltaic Base Project. This energy storage station is one of the first batch of projects supporting the 100 GW large-scale wind and photovoltaic bases nationwide.

Why is energy storage important?

Energy storage is an important link for the grid to efficiently accept new energy, which can significantly improve the consumption of new energy electricity such as wind and photovoltaics by the power grid, ensuring the safe and reliable operation of the grid system, but energy storage is a high-cost resource.

How does energy storage work?

In this case, the energy storage side connects the source and load ends, which needs to fully meet the demand for output storage on the power side and provide enough electricity to the load side, so a large enough energy storage capacity configuration is a must.



## Energy storage power station is industrial land

---



### [A study on the energy storage scenarios design and the ...](#)

Sep 1, 2023 · The cost of building an energy storage station is the same for different scenarios in the Big Data Industrial Park, including the cost of investment, operation and maintenance ...

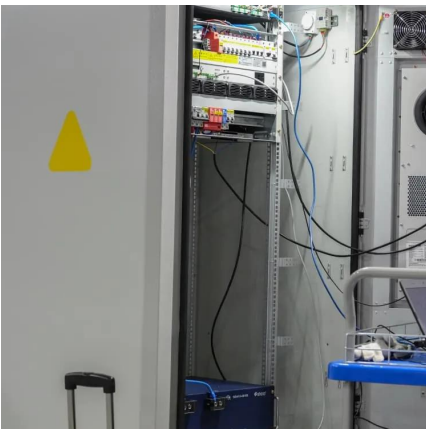
### [Land use of energy storage power station project](#)

Land use of energy storage power station project  
Large-scale integration of renewable energy in China has had a major impact on the balance of supply and demand in the power system. It is ...



### [Energy storage power station is industrial land](#)

This article provides a comprehensive comparison between industrial and commercial energy storage systems and energy storage power station systems. These systems, while both ...



### [Energy storage power station uses industrial land](#)

Oct 25, 2024 · A battery energy storage system (BESS) or battery storage power station is a type of energy storage technology that uses a group of batteries to store electrical energy. Battery ...



### What is the energy storage power station ...

Aug 6, 2024 · The energy storage power station industry has been observing exponential growth alongside the rapid advancement of clean energy ...



### Energy storage power station land use standards

However, BESS have potential applications across the rural-to-urban transect, and most communities will need to address BESS in some form. This issue of Zoning Practice explores ...



### **What is the energy storage power station industry? , NenPower**

Aug 6, 2024 · The energy storage power station industry has been observing exponential growth alongside the rapid advancement of clean energy technologies. This dynamic environment ...





## [How Much Land Do Energy Storage Power Stations Really ...](#)

As renewable energy capacity surges globally - solar and wind installations grew 18% year-over-year in Q1 2025 - the need for utility-scale energy storage has never been greater. But here's ...



## [China's Largest Grid-Forming Energy Storage Station ...](#)

Apr 9, 2024 · The station was built in two phases; the first phase, a 100 MW/200 MWh energy storage station, was constructed with a grid-following design and was fully operational in June ...

## **Industrial and commercial energy storage vs energy storage power stations**

1 day ago · The article first introduces the concept of industrial and commercial energy storage and energy storage power stations, outlining their respective roles in energy storage, ...



## [Energy Storage Power Station Project Land Area: What You ...](#)

Aug 18, 2023 · The Land Equation: More Than Just Square Footage Size Matters (But So Does Shape) Forget "location, location, location." In energy storage land allocation, it's "orientation, ...



## [Industrial and commercial energy storage vs ...](#)

1 day ago · The article first introduces the concept of industrial and commercial energy storage and energy storage power stations, outlining ...



## Contact Us

---

For technical specifications, project proposals, or partnership inquiries, please visit:  
<https://www.eiei.pl>

## Scan QR Code for More Information



<https://www.eiei.pl>