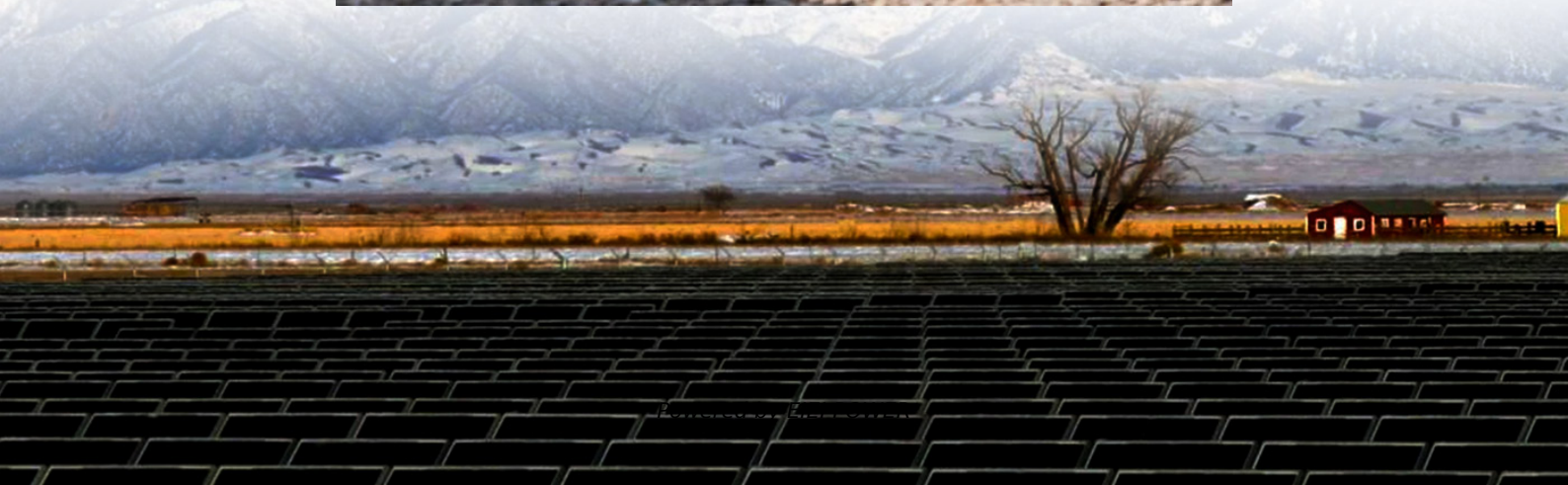
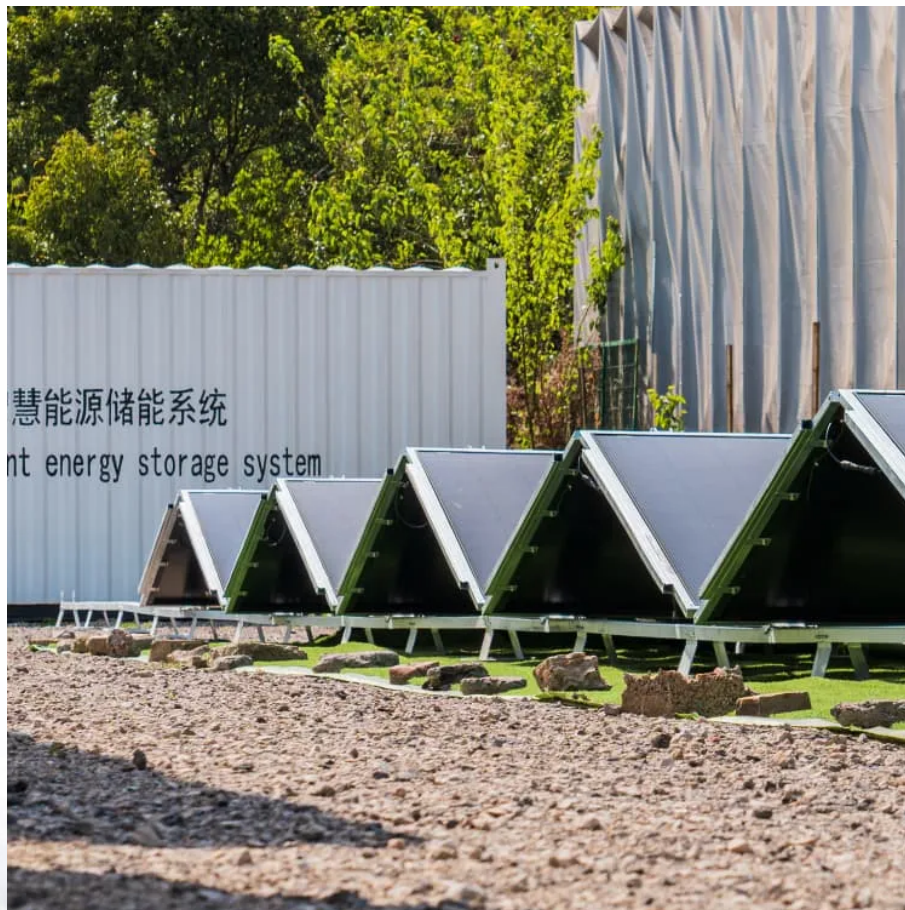


Earthquake-resistant solar-powered container for subway stations





Overview

Do metro systems withstand earthquakes?

During an earthquake, metro systems are required to have the ability to resist seismic damage. Maintaining a higher level of functionality during an earthquake is indicative of greater seismic resilience and is related to the robustness and redundancy of metro systems.

What is a mobile solar container system?

The mobile solar container system includes solar panels, storage batteries, inverter, mounting brackets, and accessories. Solar panels collect energy from the sun and store it in the battery bank, and the inverter converts it to AC power for use.

Does a mobile solar container work with a lithium battery storage container?

The mobile solar container is designed to work seamlessly with lithium battery storage containers, allowing for efficient energy storage and use. This compatibility makes storing solar power easier when sunlight is unavailable. Lifespan is over 10 years old with reliable materials.

Do urban metro systems have seismic resilience?

An urban metro system typically consists of dozens or even hundreds of stations or sections. Rapidly assessing the post-earthquake damage state of each station and section is fundamental to conducting seismic resilience assessment of urban metro systems.



Earthquake-resistant solar-powered container for subway stations

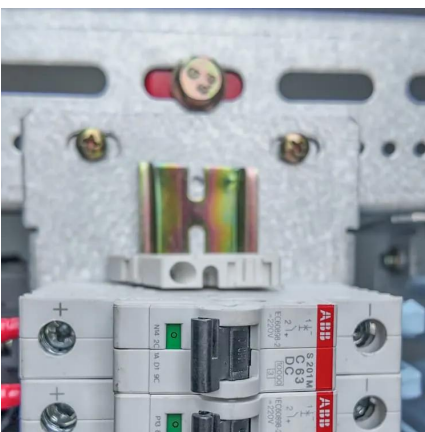
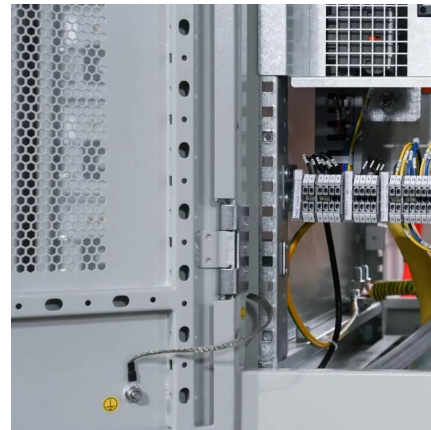


[Mobile Solar Container: Green Energy Anywhere](#)

The Solar Container can be used in a wide range of commercial, industrial, and large-scale solar applications. MEOX Mobile solar container is CE-certified, IP65-rated, resistant to dust, water, ...

[Novel seismic design solution for underground](#)

Feb 1, 2022 · This paper proposes an innovative seismic design approach for shallow rectangular cut-and-cover underground subway or railway stations. The traditiona...



Earthquakes

Jan 23, 2024 · The Earth Observatory shares images and stories about the environment, Earth systems, and climate that emerge from NASA research, satellite missions, and models.

[California's subway tunnels exemplify ...](#)

Sep 30, 2024 · California's web of underground subway tunnels can teach engineers how to design safe transit infrastructure for seismically active ...



[WHO flash appeal: earthquake response in Myanmar](#)

Mar 30, 2025 · Flash appeal requesting US\$ 8 million for the WHO response to the earthquake in Myanmar which occurred in March 2025.



Analysis of influence of seismic impact on evacuability in subway stations

Mar 1, 2025 · By linking the structural and evacuation route aspects of subway stations under earthquake conditions, this research seeks to provide a new perspective on designing subway ...



Dalian Team's Seismic Model Revolutionizes Subway Safety ...

Jul 27, 2025 · By providing a more accurate and rigorous assessment of seismic capacity, Xu's model can help ensure that subway stations--and by extension, the energy infrastructure they ...





20ft Light Steel Solar Powered Eco-Friendly Modern Villa Container

Wind resistance: Level 10 (upgradable to Level 12, CE-certified), Earthquake resistance: 8-degree (GB50011-certified), Class A fireproof (rock wool sandwich panels, 1-hour fire resistance), ...

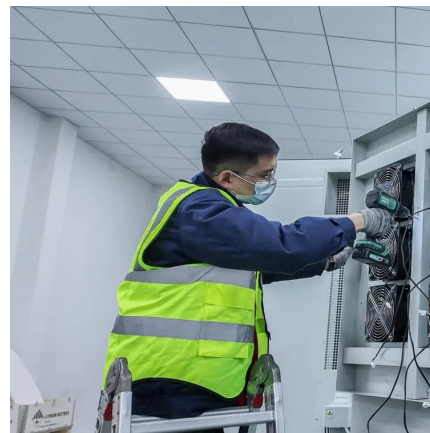


[WHO response to Myanmar Earthquake 2025](#)

Apr 1, 2025 · On 28 March 2025, two powerful earthquakes struck central Myanmar's Sagaing Region near Mandalay. The first, with a magnitude of 7.7, occurred at 12:50 p.m. local time, ...

[California's subway tunnels exemplify seismically safe ...](#)

Sep 30, 2024 · California's web of underground subway tunnels can teach engineers how to design safe transit infrastructure for seismically active cities.



[How Do Solar Containers Enable Disaster ...](#)

Jun 9, 2025 · How do solar containers support disaster relief efforts? Discover how mobile solar units provide fast, fuel-free power during ...



Are Earthquake-Resistant Container Homes Viable in Seismic ...

The growing demand for affordable and resilient housing in earthquake-prone areas has led to innovative solutions like earthquake-resistant container homes. These structures combine ...

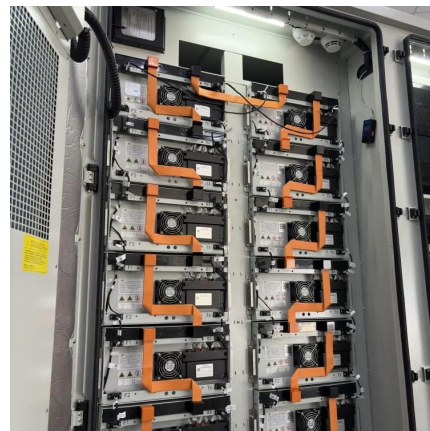


[Myanmar earthquake response 2025](#)

Mar 30, 2025 · Sagaing earthquake in Myanmar
On 28 March 2025, two powerful earthquakes struck central Myanmar's Sagaing Region near Mandalay. The first, with a magnitude of 7.7, ...

Vanuatu responds to multiple health challenges following ...

Jan 9, 2025 · On 17 December 2024, a powerful 7.3 magnitude earthquake struck near Port Vila, the capital of Vanuatu, impacting more than a quarter of the country's population. The disaster ...



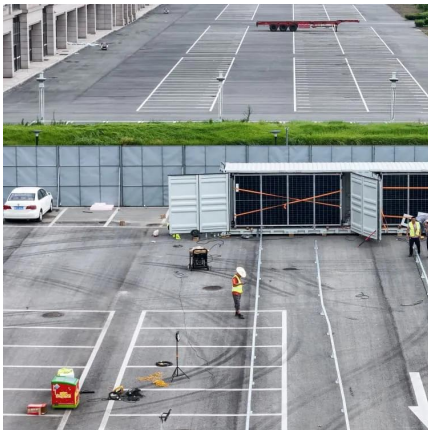
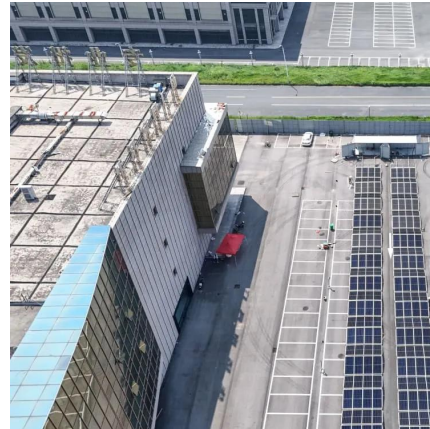
[Earthquake in Türkiye and the Syrian Arab Republic](#)

On 6 February 2023, a series of large earthquakes hit southern Türkiye and northern Syria, followed by hundreds of aftershocks. Thousands of lives were lost in the initial earthquakes ...



How Do Solar Containers Enable Disaster Relief? With an Eye ...

Jun 9, 2025 · How do solar containers support disaster relief efforts? Discover how mobile solar units provide fast, fuel-free power during earthquakes--powering hospitals, shelters, and ...

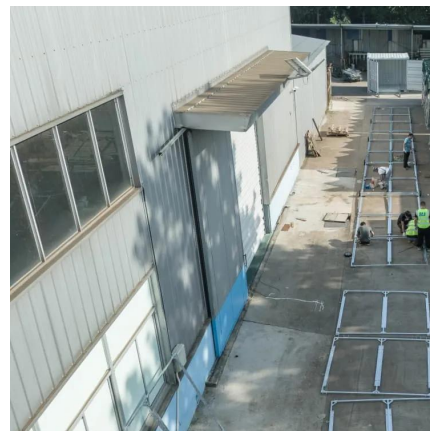


On the path to recovery: three months after the earthquake ...

Mar 16, 2025 · A 7.3 magnitude earthquake struck Port Vila on 17 December 2024, claimed 14 lives, destroyed critical infrastructure, and displaced over 2000 people who needed to stay in ...

Emergency

Nov 13, 2025 · A strong earthquake of 6.4 magnitude hit Nepal's Western Province of Karnali, shortly before midnight, on 3 November 2023. As of 24 November 2023, 154 people (Female: ...



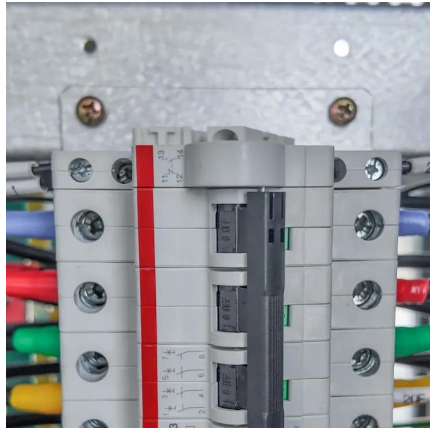
[WHO Responds to Nepal Earthquake](#)

Nov 7, 2023 · Working closely with the government and partners, WHO is supporting to respond to the urgent health needs of the affected populationA 6.4 magnitude earthquake hit Nepal's ...



[Dalian Team's Seismic Model Revolutionizes ...](#)

Jul 27, 2025 · By providing a more accurate and rigorous assessment of seismic capacity, Xu's model can help ensure that subway stations--and ...

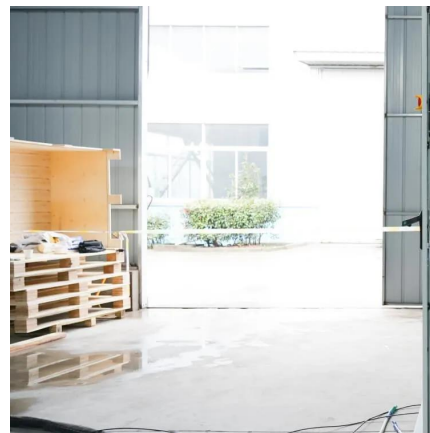


[Seismic Resilience Assessment Method of Subway Station](#)

1 day ago · Research purposes: The structure of the subway station is buried deep underground, once it is damaged by an earthquake, disaster prevention, rescue, and post-disaster repair will ...

[A comprehensive review of resilience of urban metro ...](#)

Oct 1, 2024 · The paper presents a systematic review of the research advancements on the resilience of urban metro systems from the perspective of earthquake engineering. The review ...



Earthquakes

2 days ago · Earthquakes can strike suddenly and without warning. An earthquake is a violent and abrupt shaking of the ground, caused by movement between tectonic plates along a fault ...



Contact Us

For technical specifications, project proposals, or partnership inquiries, please visit:
<https://www.eiei.pl>

Scan QR Code for More Information



<https://www.eiei.pl>