

Does the home charging station have an inverter





Overview

Should you choose a portable power station or an inverter?

When deciding between a portable power station and an inverter, consider factors such as portability, power output, and charging options. Portable power stations may be more expensive due to their built-in battery and portability features, while inverters may require additional components like a battery or power source.

What is the difference between an inverter and a power station?

Inverter: Generally less portable as it's designed to be used with external batteries or power sources. It's more suited for stationary setups or situations where you have a dedicated power source. **Portable Power Station:** Designed for portability, making it ideal for camping, outdoor activities, and emergency preparedness.

What is an inverter charger?

An inverter charger is a hybrid device that combines two critical functions in one unit: **Inverting:** Converts DC power from batteries (e.g., 12V/24V/48V) to AC power (120V/240V) for household appliances. **Charging:** Converts AC power from the grid or a generator back to DC to recharge your batteries—automatically and efficiently.

Do inverters need a battery?

Dependency on a Power Source: Inverters require a steady DC power source to function, so you'll need a battery or other DC supply. **Complex Setup:** Setting up an inverter system can be complex, especially if integrating it with solar panels or other energy sources.



Does the home charging station have an inverter



Portable Power Station vs Inverter - Key Differences Explained

Sep 6, 2024 · An inverter converts DC power from a battery to AC power for various devices. A portable power station includes an inverter along with a built-in battery, offering a self ...

[Inverter vs. Inverter Charger: What's the Difference?](#)

Mar 17, 2025 · Confused about inverters and inverter chargers? Learn the key differences, discover their best uses, and find the perfect energy solution for your needs.



[GM Energy Vehicle-to-Home Solutions](#)

1 day ago · Made to do much more than power up your V2H-capable GM EV, GM Energy's bidirectional charging is a new way to look at energy overall. ...

[How is EV Charging Revolutionized by Inverters?](#)

Mar 13, 2025 · Conclusion: Future of EV Charging in Solar Energy Investing in a single-phase string inverter for a solar-powered electric vehicle charging station can substantially improve ...



[Power Smarter: DC-DC vs Inverter Charging Explained](#)

Aug 4, 2025 · Unlock the best charging method for your needs. Compare DC-to-DC vs inverter chargers on cost, efficiency, & power to make the smartest choice for your setup.



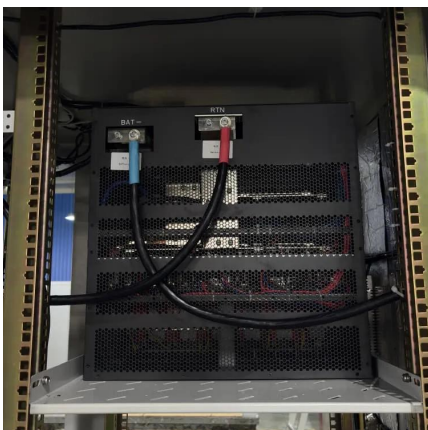
Portable Power Station vs Inverter - Key Differences Explained

Sep 6, 2024 · An inverter converts DC power from a battery to AC power for various devices. A portable power station includes ...



[Inverter vs. Inverter Charger: What's the ...](#)

Mar 17, 2025 · Confused about inverters and inverter chargers? Learn the key differences, discover their best uses, and find the perfect energy ...





What is the difference between an inverter and a power station?

6 days ago · In this guide, we'll explore the differences between inverters and power stations and help you decide which one is right for your needs. What is an Inverter? An inverter is a device ...

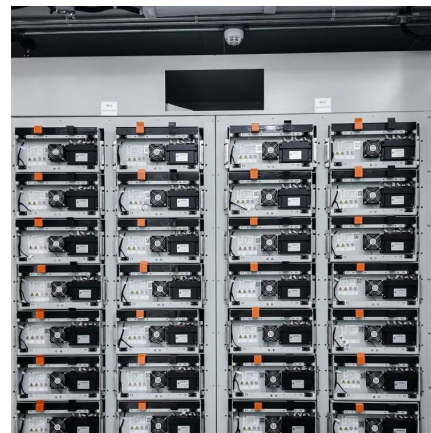


[Charge Station Pro / Home Integration System staggered](#)

Apr 20, 2022 · The charge Station Pro does not have an integral inverter. As for tying it into an existing system, it will likely take a system designer that is a specialist in non-standard ...

[Inverter vs Power Station: Key Differences Explained](#)

Jun 8, 2025 · Anatomy of a Power Station: Battery, Inverter, and Outputs Inside, you'll typically find a lithium battery, a built-in inverter, and multiple output ports--USB, AC plugs, and ...



[GM Energy Vehicle-to-Home Solutions . Power Your Home ...](#)

1 day ago · Made to do much more than power up your V2H-capable GM EV, GM Energy's bidirectional charging is a new way to look at energy overall. Integrated, inspired design lets ...



[Inverter vs. Portable Power Station: What's ...](#)

Nov 26, 2024 · Inverter: Generally less expensive than high-capacity portable power stations, especially if you already have a DC power source. ...

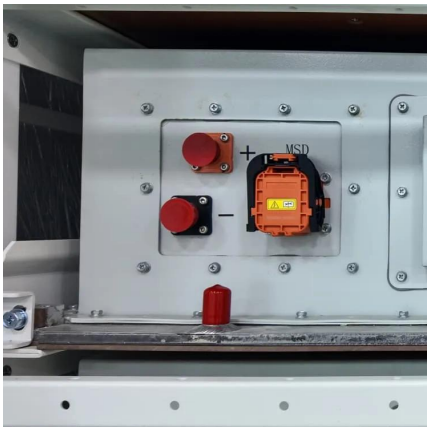


[Portable Power Station vs. Inverter Difference](#)

Aug 19, 2024 · A power station has an inverter, but also uses a built-in battery, charge controllers, and other items to create an energy source you can take anywhere. Did you know that solar ...

[What is the difference between an inverter ...](#)

6 days ago · In this guide, we'll explore the differences between inverters and power stations and help you decide which one is right for your needs. ...



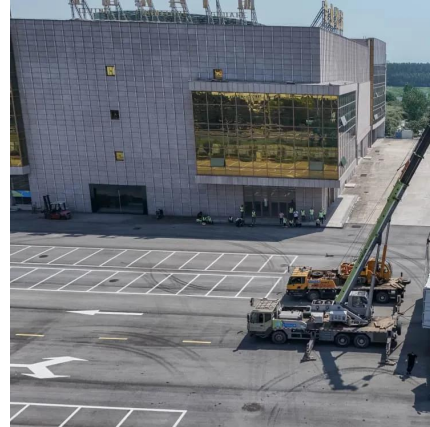
[Portable Power Station vs. Inverter Difference](#)

Aug 19, 2024 · A power station has an inverter, but also uses a built-in battery, charge controllers, and other items to create an energy source ...



Inverter vs. Portable Power Station: What's the Best Choice ...

Nov 26, 2024 · Inverter: Generally less expensive than high-capacity portable power stations, especially if you already have a DC power source. Portable Power Station: Can be more costly ...



Contact Us

For technical specifications, project proposals, or partnership inquiries, please visit:
<https://www.eiei.pl>

Scan QR Code for More Information



<https://www.eiei.pl>