

Distributed base station emergency power supply box





Overview

What are emergency power distribution systems?

Ensure uninterrupted operations with emergency power distribution systems. These backup solutions, including standby generators and uninterruptible power supplies, safeguard against power outages in industrial and commercial settings.

What are emergency and standby power systems?

Emergency and standby power systems are designed to provide an alternate source of power if the normal source of power, typically the electric utility service, should fail. Reliability of these types of systems is critical and good design practices are essential. Classification of Emergency and Standby Power Systems.

What is emergency power supply system (EPSS)?

Accreditation standards recommend CIs to have emergency power supply system (EPSS) in order to form a local microgrid network with backup resources (generation units/renewable resources) in case of sudden power blackouts of main grid supply.

What is the basic configuration of an emergency/standby power system?

Basic Single Engine Configuration The most basic configuration of an emergency or standby power system is a single engine with single or multiple transfer switches shown in Simple Emergency/Standby System Arrangement. The transfer switch (es) transfer the emergency/standby loads to the alternate source upon loss of the normal source.



Distributed base station emergency power supply box

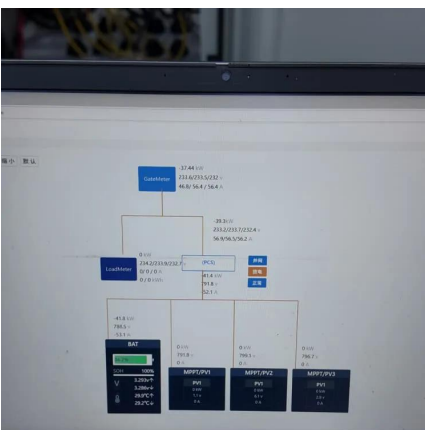


HL-PD-DP53

Signal indicating failure alarm; Equipped with active linkage device, which can be externally connected to DC24V/36V power supply according to site requirements. Carry out linkage ...

HL-PD-DP53

Signal indicating failure alarm; Equipped with active linkage device, which can be externally connected to DC24V/36V power supply according to site ...



Electric Vehicle Routing Problem for Emergency Power Supply...

Apr 9, 2024 · Recently, various approaches have emerged that apply vehicle-to-grid (V2G) or vehicle-to-home (V2H) technologies for emergency power supply (Xu and Chung, 2016; Yang ...

[Emergency Power Distribution Systems & Solutions , LEX ...](#)

The 400 Amp Hammerhead(TM) emergency power distribution box is ideal for powering shelters, live events, and other portable distribution units. The breakers are mounted under a hinged ...



[Emergency Power Distribution Systems](#)

Mar 25, 2024 · Ensure uninterrupted operations with emergency power distribution systems. These backup solutions, including standby generators and uninterruptible power supplies, ...

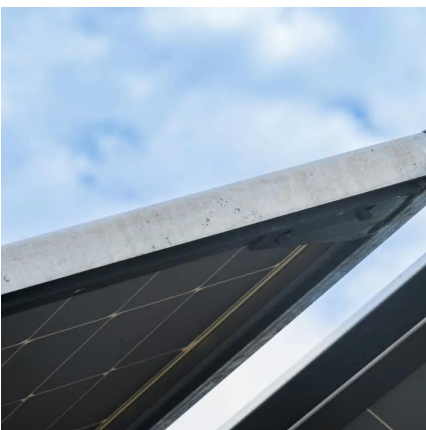
The Generator Distribution Problem for Base Stations during Emergency

This repository contains the data for paper titled "The Generator Distribution Problem for Base Stations during Emergency Power Outage: A branch-and-price-and-cut approach".



[Emergency Power Distribution Systems](#)

Ensure uninterrupted operations with emergency power distribution systems. These backup solutions, including standby generators and uninterruptible power supplies, safeguard against ...





Distributed Base Stations Circuit Protection Application Note

Sep 8, 2025 · This application note provides an illustrated overview of the five basic Distributed Base Station architectures in use today: legacy, split design, "hoteling" approach, zero ...



[Emergency Power Distribution Systems](#)

The 400 Amp Hammerhead(TM) emergency power distribution box is ideal for powering shelters, live events, and other portable distribution units. The ...

The generator distribution problem for base stations during emergency

Nov 1, 2024 · Therefore, ensuring uninterrupted power supply at base stations is of paramount importance. To address the issue and restore telecommunications services during disruptions, ...



[Key Points of Emergency Power System Design and Wiring ...](#)

Aug 14, 2024 · Two power supply lines for disaster prevention or similar important electrical equipment should automatically switch at the final distribution box. Large enterprises and ...



Emergency Power Distribution Equipment

When power is lost, emergency systems are required to provide alternate power within ten seconds or less. Legally Required Standby Systems: NEC Article 701 specifies electrical ...



Emergency Power Supply System for Critical ...

Nov 21, 2023 · ABSTRACT Seamless recovery and sustained power to critical infrastructures (CIs), after grid failure, is a crucial need arising in disaster scenarios that are increasingly ...

Contact Us

For technical specifications, project proposals, or partnership inquiries, please visit:
<https://www.eiei.pl>

Scan QR Code for More Information



<https://www.eiei.pl>