

Container ship generator voltage range





Overview

How much power does a container ship need?

In container ships, the necessary power from the medium-voltage system for two to three cargo bays each is transformed to 440 V and the plug distributors are fed into the various tiers in a distributor with 6-8 containers each. To ensure availability, these systems are usually unearthed.

What is a high voltage shore connection system (hvscs)?

1.2 These Guidelines are applicable to vessels equipped with a High Voltage Shore Connection System (HVSCS) or a Low Voltage Shore Connection System (LVSCS) designed to power the vessel with shore power, enabling the shipboard generators to be shut down while in port/ at berth.

What is the power distribution system on a container vessel?

For example, on a modern container vessel with high reefer load, the power distribution system onboard vessel consists of a main 6.6kV switchboard, main 440V switchboard and the 440V emergency switchboard. The normal operating condition of the network is as follows:.

How does an emergency generator work on a ship?

The autostarting of an emergency generator is a critical safety feature on ships, ensuring that the generator automatically starts during a main power failure. The key component in this system is the sensing relay, which monitors the voltage from the main switchboard.



Container ship generator voltage range



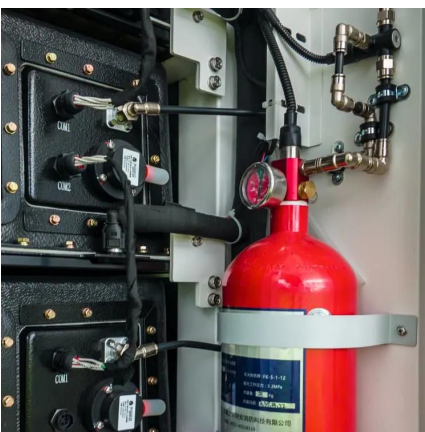
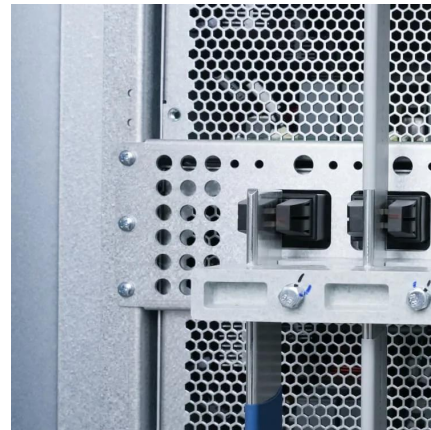
[Container High Voltage Generator](#)

Aug 16, 2025 · The container high voltage generators are designed for easy access and maintenance, making it easier for technicians to perform routine inspections, repairs, and ...

[Guidelines on High Voltage Shore Connection ...](#)

Jun 26, 2025 · 1.2 These Guidelines are applicable to vessels equipped with a High Voltage Shore Connection System (HVSCS) or a Low Voltage Shore Connection System (LVSCS)

...



PSW & Danfoss: Flexible onshore power supply (OPS) for cruise ships

Dec 15, 2024 · These make sure the power supply matches the required voltage and frequency of the ship by converting the 50Hz grid power to match the 60Hz grid onboard most cruise ships. ...

[Power Generation and Distribution](#)

Apr 5, 2018 · Shipboard electrical power generation is generally for ship service power supported by emergency generators. In the case of a prime mover-driven propulsion system, ship service ...



[Ship Power Generation Systems: From Diesel Generators to ...](#)

Keep the lights on at sea: this deep, human-friendly guide explains how a ship's power generation system --diesel generators, alternators, AVR, switchboards, synchronizing and Power ...



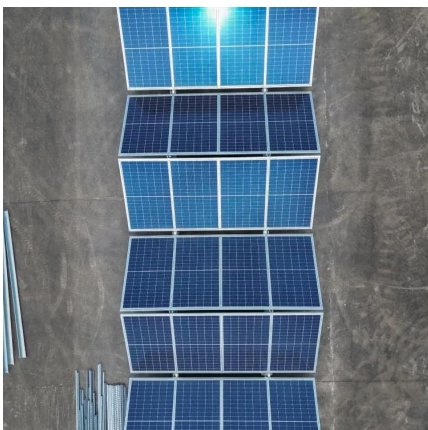
[What you need to know about High Voltage onboard vessel](#)

Dec 5, 2022 · For example, on a modern container vessel with high reefer load, the power distribution system onboard vessel consists of a main 6.6kV switchboard, main 440V ...



[Emergency Generator On Ships: The Best ...](#)

Dec 1, 2025 · Learn emergency generator requirements on ships, location rules, components, auto-start, testing, and troubleshooting for marine ...





[PSW & Danfoss: Flexible onshore power ...](#)

Dec 15, 2024 · These make sure the power supply matches the required voltage and frequency of the ship by converting the 50Hz grid power to ...



[Emergency Generator On Ships: The Best Maintenance Guide ...](#)

Dec 1, 2025 · Learn emergency generator requirements on ships, location rules, components, auto-start, testing, and troubleshooting for marine engineers (2025)

[Electrical Safety Solutions for Harbours and Vessels](#)

Jun 15, 2020 · The primary system distributes the energy of the generators throughout the vessel and electrical propulsion system if available. The voltage levels depend on the vessel size and ...



[Guide for High Voltage Shore Connection 2011](#)

Mar 28, 2024 · Application Requirements in this Guide apply to vessels equipped with a high voltage shore connection system (HVCS) designed to power the vessel with the shore power ...



[What you need to know about High Voltage ...](#)

Dec 5, 2022 · For example, on a modern container vessel with high reefer load, the power distribution system onboard vessel consists of a main ...



[GUIDELINES FOR HIGH VOLTAGE SHORE CONNECTION ...](#)

Dec 22, 2022 · 1.2 Scope The Guidelines apply to ships that have shut down the on-board generators while at berth, and are supplied power only through high voltage shore connections.

Contact Us

For technical specifications, project proposals, or partnership inquiries, please visit:
<https://www.eiei.pl>

Scan QR Code for More Information



<https://www.eiei.pl>