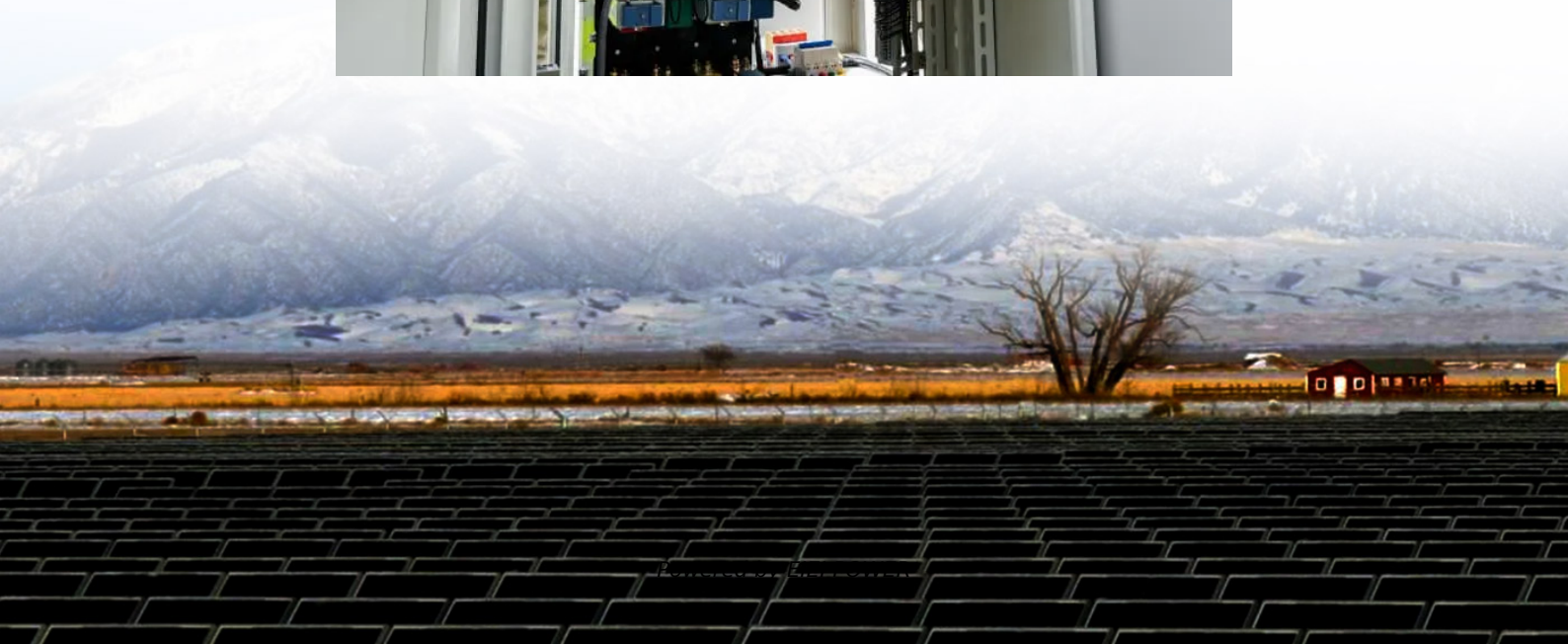


Communication principle between base stations





Overview

What is a base station and how does it work?

A base station is a fixed point of communication between mobile devices and the wider telecom network. It transmits and receives radio signals, enabling your phone to access voice, data, and internet services. Together, thousands of base stations form a seamless web of coverage known as a cellular network. How Does It Work?

.

Why are base stations important?

Base stations are the backbone of wireless communication networks, playing a pivotal role in signal transmission, network reliability, and high-speed data connectivity. As technology evolves, the importance of base stations will continue to grow, addressing new challenges and supporting the ever-expanding demand for wireless communication services.

Why are base stations important in cellular communication?

Base stations are important in the cellular communication as it facilitate seamless communication between mobile devices and the network communication. The demand for efficient data transmission are increased as we are advancing towards new technologies such as 5G and other data intensive applications.

What is a base station in a mobile network?

Often hidden in plain sight on rooftops or towers, base stations are the backbone of modern mobile networks. What Is a Base Station?

A base station is a fixed point of communication between mobile devices and the wider telecom network. It transmits and receives radio signals, enabling your phone to access voice, data, and internet services.



Communication principle between base stations



[Base Stations and Cell Towers: The Pillars of Mobile ...](#)

May 16, 2024 · Base stations and cell towers are critical components of cellular communication systems, serving as the infrastructure that supports seamless mobile connectivity. These ...

What Is the Role of a Base Station in Wireless Communication?

Jun 27, 2025 · Base stations are the backbone of wireless communication networks, playing a pivotal role in signal transmission, network reliability, and high-speed data connectivity. As ...



[What Is A Base Station?](#)

Apr 22, 2024 · A base station is an integral component of wireless communication networks, serving as a central point that manages the transmission and reception of signals between ...

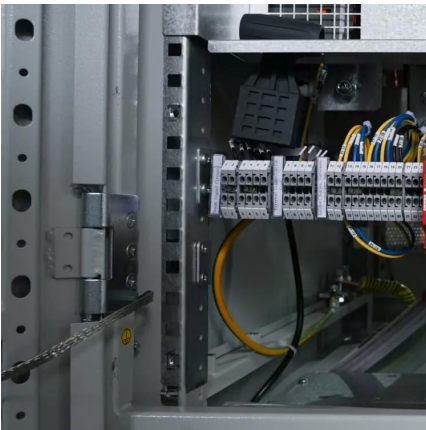
Base Stations

Jul 23, 2025 · The present-day tele-space is incomplete without the base stations as these constitute an important part of the modern-day scheme of wireless communications. They are ...



[How do communication base stations work](#)

Conclusion Communication base stations play a crucial role in modern wireless communications by providing reliable connectivity to mobile ...



[Exploring communication base stations](#)

Dec 18, 2024 · The specific working principles of different types of base stations, such as 2G, 3G, 4G, and 5G base stations, may vary depending on the communication technology standards ...



[How wireless base stations work](#)

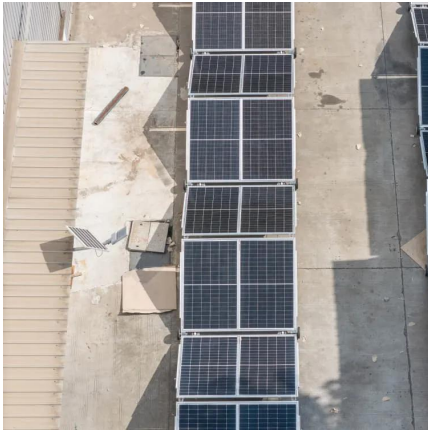
The working principle of wireless base stations involves the reception, processing, forwarding and transmission of wireless signals to achieve seamless connection in mobile communications. ...





Understanding Base Stations: The Backbone of Wireless Communication

Jan 6, 2025 · Whether in the form of large macro stations or tiny small cells, base stations will continue to evolve, providing the foundation for next-generation communication technologies ...

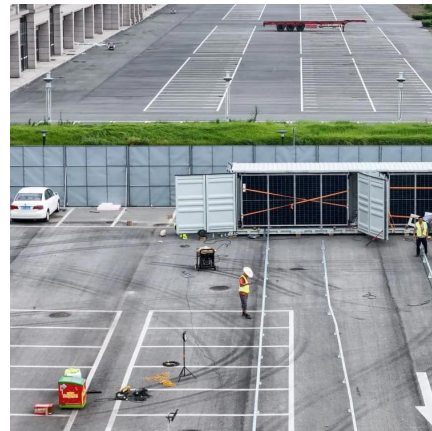


[What Does a Base Station Do and Why Is It Essential for ...](#)

Sep 5, 2025 · What Is a Base Station? A base station is a fixed point of communication between mobile devices and the wider telecom network. It transmits and receives radio signals, ...

[Understanding Base Stations in Mobile Communication](#)

Nov 21, 2025 · The operational mechanics of base stations are underpinned by principles from radio communications and network theory. Radio waves facilitate wireless communication, ...



[Exploring communication base stations](#)

Dec 18, 2024 · The specific working principles of different types of base stations, such as 2G, 3G, 4G, and 5G base stations, may vary depending ...



[How do communication base stations work](#)

Conclusion Communication base stations play a crucial role in modern wireless communications by providing reliable connectivity to mobile devices within their coverage areas. Through ...



Contact Us

For technical specifications, project proposals, or partnership inquiries, please visit:
<https://www.eiei.pl>

Scan QR Code for More Information



<https://www.eiei.pl>