

Communication ground base station range





Overview

What VSWR should a ground station have?

The antenna standing wave ratio (VSWR or SWR) should not exceed 1.5 for the ground station or 2.0 for the airborne station. The airborne antenna should be one of the standard widely used vhf aircraft antennas. A gain antenna may be used at the ground station to increase communications range.

How high should a ground station antenna be?

The ground station antenna should be at least 15 feet above the ground—20 feet is better and 30 feet even better. If roof mounted, the antenna should be mounted near the highest point on the roof. Range figures stated here assume an antenna height of 20 feet above the ground, in gently rolling terrain with low hills.

Is a ground BS antenna suitable for the cmwave frequency range?

The cmWave frequency range, defined from 7 GHz to 15 GHz, potentially strikes a balance capacity and propagation losses, being a promising frequency range for 6G . The ground BS antenna design is clearly central to address-ing these technical challenges. To this end, this paper proposes novel ground BS antenna design for the cmWave range.

What is a ground BS antenna?

The paper introduces a ground BS antenna design for the 5.9-8.5 GHz band. The main contributions include wide-band, high-isolation antenna array concept for the ground BS antenna, along with an analysis of how the antenna array dimension affects the signal-to-noise-and-interference ratio and throughput in ATG systems.



Communication ground base station range



[Ground Base Station Antenna Design for Air-to-Ground ...](#)

Mar 11, 2024 · The digital airspace offers new opportunities in the sky, such as mission-critical mobile broadband solutions and high altitude communication for aircraft [4]. In the latter use ...

Base stations

Base stations emit radiofrequency electromagnetic fields (RF EMF) in the range from several hundred MHz to several GHz. The exact frequency bands used differ between technologies ...

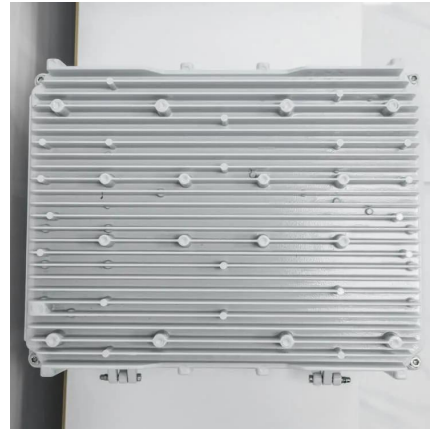


[Base Station Antennas , Huge range , Amphenol Procom](#)

Jun 26, 2025 · Our Base station antennas are deployed in a comprehensive range of networks such as Public Safety, Mission Critical Communication, LTE and IoT networks. Furthermore, ...

[Base Station Antenna Height ...](#)

By Lxelec / March 17, 2025 / 5G base station antenna, 5G tower height regulations, base station antenna height requirements, RF coverage ...



[Base Station Antenna Height Recommendations Explained](#)

By Lxelec / March 17, 2025 / 5G base station antenna, 5G tower height regulations, base station antenna height requirements, RF coverage planning Share Great Content Per ITU-R P.1410 ...



Ground Base Station Antenna Design for Air-to-Ground Communications

Mar 22, 2024 · The sixth generation (6G) of mobile communication networks aims to bring innovations in mobile broadband solutions and airborne communications. This paper proposes ...



[COMMUNICATIONS RANGE OF AVIATION BAND BASE ...](#)

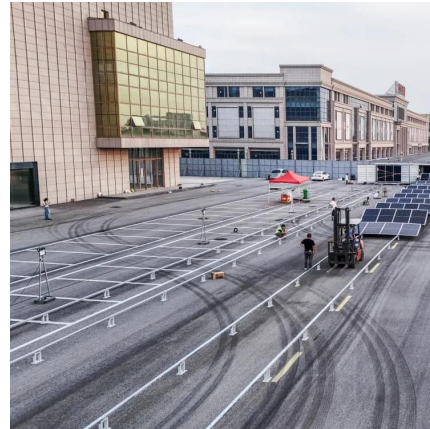
Jan 21, 2016 · COMMUNICATIONS RANGE OF AVIATION BAND BASE STATIONS There are wide variations in the distances obtained for ground-air communications. Under some ...





VHF Base Stations for Long-Range Communication

What Is a VHF Base Station? A VHF (Very High Frequency) base station is a fixed communication device that operates within the 30 MHz to 300 MHz frequency range. Known ...



What is the range of a typical communication base station

The typical communication base station, also known as aThe typical communication base station, also known as a specific geographic area with wireless The range of a base station can vary ...

Ground Segment 101: FAQs on Antennas & Ground Stations ...

5 days ago · Discover key insights into antennas, ground stations, and networks. Learn about operations, costs, and benefits of satellite communication systems.



What is the range of a typical communication ...

The typical communication base station, also known as aThe typical communication base station, also known as a specific geographic area ...





The First Experimental Validation of a Communication Base Station ...

Mar 22, 2025 · Abstract Integrated Sensing and Communication (ISAC) is an important trend for future commutation networks. The Communication Base Station (CBS) can be used as a ...

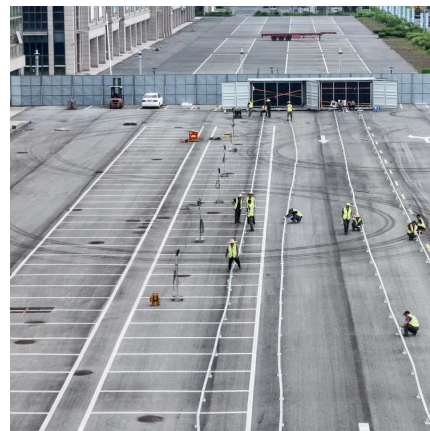


[The First Experimental Validation of a ...](#)

Mar 22, 2025 · Abstract Integrated Sensing and Communication (ISAC) is an important trend for future commutation networks. The Communication ...

[Ground Segment 101: FAQs on Antennas](#)

5 days ago · Discover key insights into antennas, ground stations, and networks. Learn about operations, costs, and benefits of satellite ...



Contact Us

For technical specifications, project proposals, or partnership inquiries, please visit:
<https://www.eiei.pl>



Scan QR Code for More Information



<https://www.eiei.pl>