

# **Communication equipment base station belongs to**





## Overview

---

What is a base station in telecommunications?

In telecommunications, a base station is a fixed transceiver that serves as the main communication point for one or more wireless mobile client devices. It not only connects wireless devices to each other but also links them to other networks or devices, often through dedicated high-bandwidth wired or fiber optic connections.

What is a base station and how does it work?

A base station is a fixed point of communication between mobile devices and the wider telecom network. It transmits and receives radio signals, enabling your phone to access voice, data, and internet services. Together, thousands of base stations form a seamless web of coverage known as a cellular network. How Does It Work?

.

What is a base station in a cellular network?

Base stations are the foundational elements that make this connectivity possible, acting as fixed points that bridge the gap between a mobile device's radio signal and the global wired network. They are communication hubs in a cellular network that ensure continuous service as users move throughout a geographical area. What is a Base Station?

.

How does a base station communicate with a client device?

Generally, if client devices wanted to communicate to each other, they would communicate both directly with the base station and do so by routing all traffic through it for transmission to another device. Base stations in cellular telephone networks are more commonly referred to as cell towers.



## Communication equipment base station belongs to

---



### What Is the Role of a Base Station in Wireless Communication?

Jun 27, 2025 · Base stations are the backbone of wireless communication networks, playing a pivotal role in signal transmission, network reliability, and high-speed data connectivity. As ...

### [Mobile Base Stations: Cells, Sectors, Carriers ...](#)

Oct 2, 2025 · Mounted on the tower are many antenna faces that belong to one or more base stations. A complete 4G base station typically consists ...



### [What Is a Base Station? Definition and How It Works](#)

Oct 10, 2025 · A base station is a fixed transceiver that serves as the central communication point for mobile devices within a defined geographical area, known as a cell. It is sometimes called ...

### Understanding Base Stations: The Backbone of Wireless Communication

Jan 6, 2025 · In today's digital age, reliable and high-speed communication is more essential than ever. Whether it's for mobile phones, internet services, or IoT (Internet of Things) devices, ...



### What is a base station?

Mar 4, 2021 · In telecommunications, a base station is a fixed transceiver that is the main communication point for one or more wireless mobile client devices.



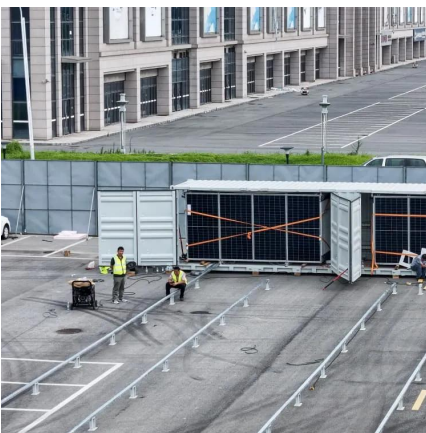
### What is a Base Station? -- From Communication Core to ...

Aug 19, 2025 · Base stations are the core of mobile communication, and with the rise of 5G, thermal and energy challenges are increasing. This article explains the definition, structure, ...



### **Base Stations**

Jul 23, 2025 · The present-day tele-space is incomplete without the base stations as these constitute an important part of the modern-day scheme of wireless communications. They are ...





### What are Base Station in Telecommunications?

Nov 21, 2025 · A base station connects your phone to the network. It acts as a hub between mobile devices and the core system.

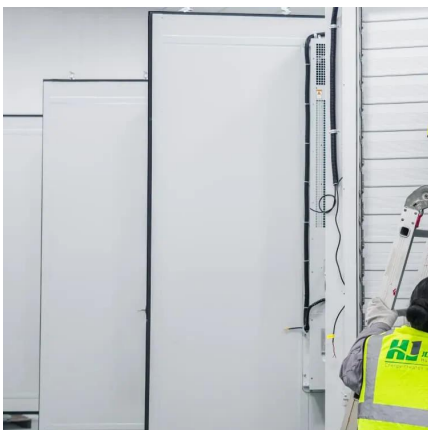


### What Is A Base Station?

Apr 22, 2024 · A base station is an integral component of wireless communication networks, serving as a central point that manages the transmission and reception of signals between ...

### Mobile Base Stations: Cells, Sectors, Carriers Explained

Oct 2, 2025 · Mounted on the tower are many antenna faces that belong to one or more base stations. A complete 4G base station typically consists of BBU, RRU, and the antenna and ...



### What Does a Base Station Do and Why Is It Essential for ...

Sep 5, 2025 · What Is a Base Station? A base station is a fixed point of communication between mobile devices and the wider telecom network. It transmits and receives radio signals, ...



## Contact Us

---

For technical specifications, project proposals, or partnership inquiries, please visit:  
<https://www.eiei.pl>

### Scan QR Code for More Information



<https://www.eiei.pl>