

# Communication channel provided by the base station





## Overview

---

What is a base station in telecommunications?

In telecommunications, a base station is a fixed transceiver that serves as the main communication point for one or more wireless mobile client devices. It not only connects wireless devices to each other but also links them to other networks or devices, often through dedicated high-bandwidth wired or fiber optic connections.

What are base stations & how do they work?

Base stations are the critical components that enable mobile phones and other devices to connect to cellular networks. Here's how they work in a typical mobile network: Signal Transmission and Reception: Mobile devices communicate with the nearest base station via radio waves.

What is a base station in a cellular network?

It acts as the intermediary between the mobile device and the broader telecommunications network, facilitating both data transfer and voice communication. In cellular networks, a base station typically consists of antennas, a transmitter/receiver system, and a base station controller (BSC).

Why are base stations important in cellular communication?

Base stations are important in the cellular communication as it facilitate seamless communication between mobile devices and the network communication. The demand for efficient data transmission are increased as we are advancing towards new technologies such as 5G and other data intensive applications.



## Communication channel provided by the base station

---



### [The Base Station in Wireless Communications: ...](#)

Nov 10, 2023 · In each cell, one time slot is allocated to the information channel (BCCH) and one or two to the control channel (SDCCH). Access ...

### **Understanding Base Stations: The Backbone of Wireless Communication**

Jan 6, 2025 · In today's digital age, reliable and high-speed communication is more essential than ever. Whether it's for mobile phones, internet services, or IoT (Internet of Things) devices, ...



### **Flying Base Station Channel Capacity Limits: Dependent on ...**

Jun 7, 2024 · As communication protocols and implementations for flying base stations undergo development for next-generation wireless networking, we focus on information-theoretical ...

### [What are Base Station in Telecommunications?](#)

Nov 21, 2025 · A base station connects your phone to the network. It acts as a hub between mobile devices and the core system.



### [Choosing the Optimal Channels for Base Stations: A ...](#)

Apr 22, 2025 · In the world of wireless communication, the choice of channels for base stations plays a critical role in ensuring reliable service, minimizing interference, and optimizing ...



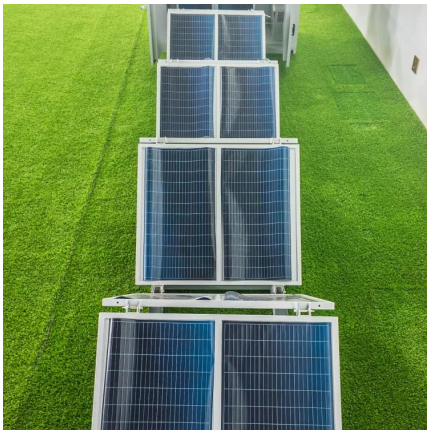
### **Base Stations**

Jul 23, 2025 · The present-day tele-space is incomplete without the base stations as these constitute an important part of the modern-day scheme of wireless communications. They are ...



### **Base Stations**

Jul 23, 2025 · The present-day tele-space is incomplete without the base stations as these constitute an important part of the modern-day scheme ...





## Flying Base Station Channel Capacity Limits: Dependent on

Jun 7, 2024 · As communication protocols and implementations for flying base stations undergo development for next-generation wireless networking, we focus on information-theoretical ...

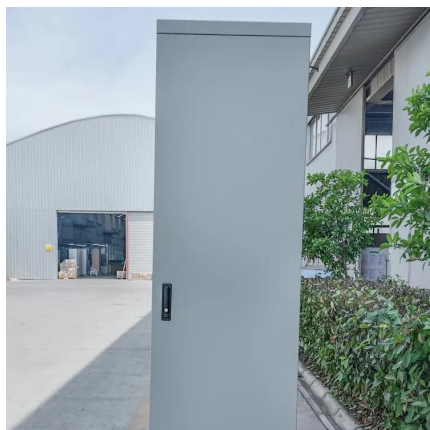


## What Is A Base Station?

Apr 22, 2024 · A base station is an integral component of wireless communication networks, serving as a central point that manages the transmission and reception of signals between ...

## Understanding Base Stations in Mobile Communication

Nov 21, 2025 · Explore the essential role of base stations in mobile communications. Understand their design, technology, and the shift to 5G ?. Discover the future impact and sustainability ...



## The Base Station in Wireless Communications: The Key to ...

Nov 10, 2023 · In each cell, one time slot is allocated to the information channel (BCCH) and one or two to the control channel (SDCCH). Access to the GSM network is provided by base ...



## What Is the Role of a Base Station in Wireless Communication?

Jun 27, 2025 · Base stations are the backbone of wireless communication networks, playing a pivotal role in signal transmission, network reliability, and high-speed data connectivity. As ...



### GSM

The Base Station Controller (BSC) The BSC manages the radio resources for one or more BTSs. It handles radio channel setup, frequency hopping, and handovers. The BSC is the connection ...

## Contact Us

---

For technical specifications, project proposals, or partnership inquiries, please visit: <https://www.eiei.pl>

**Scan QR Code for More Information**



<https://www.eiei.pl>