

Communication Green Base Station Maintenance Safety Briefing





Overview

Can a low-carbon base station improve public health?

The results of this study indicate that low-carbon upgrades of base stations can not only significantly reduce the operational costs and carbon emissions of communication systems but also reduce pollution and bring considerable public health benefits. However, this transformation still needs to overcome multidimensional challenges.

What happens when a base station is closed at night?

The average distance between neighboring communication base stations changed from 0.846 to 0.920 km after some communication base stations were closed at night. When a base station is shut down, its communication load is taken over by other neighboring base stations within the same base station unit.

How does a communication base station upgrade affect emissions?

(D) Total emissions of major pollutants (CO₂, NO_x, SO₂, and PM_{2.5}) generated by the electricity consumption of communication base stations before and after the upgrade. Paired bars with the same color represent pre- and post-upgrade comparisons for the same pollutant. Emissions of all pollutants are significantly reduced after the upgrade.

How effective are communication base stations in reducing air pollution?

In Figure 5 A, after implementing optimization measures to communication base stations, the cases of COPDs related to air pollution caused by communication base stations in 2021 would be reduced to 13,004 (65% reduction). The effectiveness of these optimizations becomes more pronounced in the following year.



Communication Green Base Station Maintenance Safety Briefing



[Energy Management of Base Station in 5G and B5G: Revisited](#)

Apr 19, 2024 · Since mmWave base stations (gNodeB) are typically capable of radiating up to 200-400 meters in urban locality. Therefore, high density of these stations is required for ...

[Energy-efficiency schemes for base stations in 5G ...](#)

In today's 5G era, the energy efficiency (EE) of cellular base stations is crucial for sustainable communication. Recognizing this, Mobile Network Operators are actively prioritizing EE for ...



[Environmental Monitoring of Communication Base ...](#)

Dec 18, 2020 · To improve the management and maintenance level of communication base stations, according to the actual requirements of environmental monitoring of communication ...



[Risk Communication Guide for Mobile Phones and Base ...](#)

Sep 26, 2023 · Communication about the location of base station antennas or use of mobile phones is sometimes characterised by high levels of concern about the subject and very little ...



[T/ZSEIA 15--2023 Evaluation of green and low-carbon](#)

Dec 22, 2023 · Abstract This document stipulates the terms and definitions of green and low-carbon services for communication base stations, the scope of classification for green and low ...



[Communication Base Station Maintenance Guide](#)
[. HuiJue ...](#)

Did you know a single communication base station failure can disrupt services for 5,000+ users? As global 5G deployments accelerate - with over 7 million base stations projected by 2025 - ...



[Communication Base Station Safety Standards](#)
[. HuiJue ...](#)

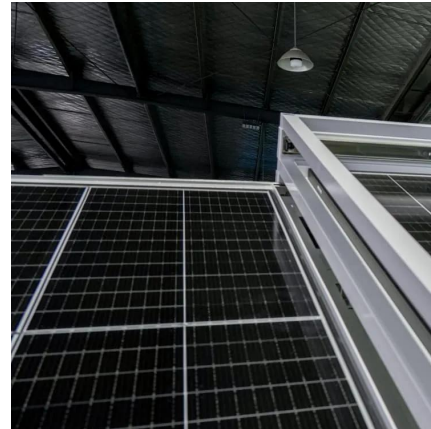
Why Modern Networks Demand Next-Gen Safety Protocols? As 5G deployments accelerate globally, communication base station safety standards face unprecedented challenges. Did ...





[5G Mobile Communication Base Station Electromagnetic ...](#)

Dec 15, 2023 · The article 35 of the Regulations stipulates that "for the establishment of large-scale wireless radio stations (stations) and ground public mobile communication BS, their ...



Low-carbon upgrading to China's communications base stations ...

Nov 21, 2025 · It is important for China's communications industry to reduce its reliance on grid-powered systems to lower base station energy costs and meet nationa...

[ASEAN Communications Green Base Station Maintenance](#)

Sep 29, 2025 · The green base station solution involves base station system architecture, base station form, power saving technologies, and application of green technologies. Using SDR ...



Contact Us

For technical specifications, project proposals, or partnership inquiries, please visit:
<https://www.eiei.pl>



Scan QR Code for More Information



<https://www.eiei.pl>