

Circuit breaker in substation in Sri-Lanka





Overview

What is a circuit breaker in a substation?

A circuit breaker in substation is a key component in electrical power systems, designed to interrupt the flow of electricity when a fault occurs, such as a short circuit or overload. Depending on system design, these devices can operate manually or automatically and come in various types, including air, vacuum, oil, and SF₆ gas.

What are the different types of circuit breaker?

The most common type is the air blast circuit breaker. These breakers use compressed air to extinguish an arc that has been created when the breaker is opened. Other types of circuit breakers include oil, vacuum, and solid state. There are different types of circuit breakers in substations.

How does a relay work in a substation?

When a relay detects an abnormality, it sends a signal to the breaker to open, thereby isolating the faulty section. This automated coordination is crucial in modern substations, particularly as grids integrate renewable energy sources and smart grid technologies.

What is a circuit breaker?

A circuit breaker is a device that is used to protect an electrical circuit from damage caused by overload or short-circuit. Circuit breakers are designed to interrupt the flow of current in an electrical circuit in the event of an overload or short-circuit.



Circuit breaker in substation in Sri-Lanka



[How Circuit Breaker Works in Substation?](#)

Aug 14, 2024 · Learn about circuit breakers in substations, their types, operation, and role in power safety.

[Electrical Substations in Sri Lanka](#)

Srilanka-Places has listed approx 134 Electrical substations in Sri Lanka. Some of the Top rated Electrical substations in Sri Lanka are- Pallekale Grid Substation, CEB Dummalasooriya ...



[Different Types of Circuit Breakers in Substations](#)

Circuit Breaker in Substation A circuit breaker is a device that interrupts the flow of electricity in an electrical circuit. It is used to protect electrical equipment from damage caused by overloads or ...

[How does a safety circuit breaker work in a substation?](#)

Jul 3, 2025 · As a safety circuit breaker supplier, I often get asked about how these crucial devices work in a substation. In this blog post, I'll delve into the inner workings of safety circuit ...



[Circuit Breakers In Sri Lanka](#)

We are the most renowned Circuit Breakers Suppliers from Sri Lanka. The items that we provide are priced cost-effectively so that you get the most transparent pricing policies and value ...



Electric Substation Structure for Power Distribution in Sri ...

Aug 30, 2020 · TThe Electric Substation Structure in Sri Lanka is a key component in strengthening the nation's power grid, ensuring the safe and efficient transmission of ...



[Report on Compliance of Distribution Substations with ...](#)

Feb 19, 2025 · Executive Summary This report provides an assessment of distribution substations' adherence to the Electricity (Safety, Quality, and Continuity) Regulations, 2016, ...





[Circuit Breaker In Substation - Types, ...](#)

Dec 5, 2024 · A circuit breaker in substation systems protects transformers and grid infrastructure by interrupting faults like overloads or short circuits. ...



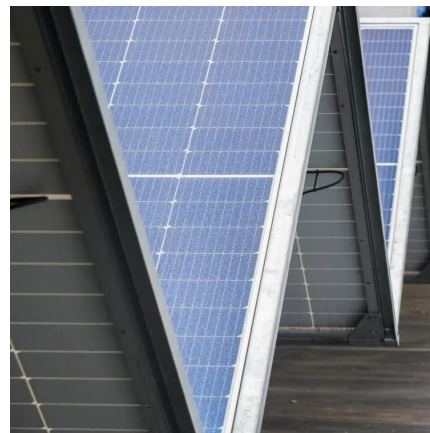
Electric Substation Structure for Power Distribution in Sri Lanka

Aug 30, 2020 · The Electric Substation Structure in Sri Lanka is a key component in strengthening the nation's power grid, ensuring the safe and efficient transmission of ...



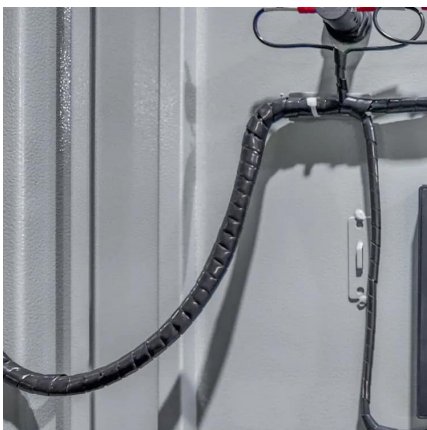
Circuit Breaker In Substation - Types, Protection And Safety

Dec 5, 2024 · A circuit breaker in substation systems protects transformers and grid infrastructure by interrupting faults like overloads or short circuits. Learn how they work, their types, ...



[How does a safety circuit breaker work in a ...](#)

Jul 3, 2025 · As a safety circuit breaker supplier, I often get asked about how these crucial devices work in a substation. In this blog post, I'll delve into ...





[Substation Components--Part 3: Circuit Breakers](#)

Nov 6, 2025 · Substation Components--Part 3: Circuit Breakers This article explores the crucial role of circuit breakers in substations, covering their fundamental functions, interruption ...



[Different Types of Circuit Breakers in ...](#)

Circuit Breaker in Substation A circuit breaker is a device that interrupts the flow of electricity in an electrical circuit. It is used to protect electrical ...

[Ceylex Engineering \(Pvt\) Ltd](#)

Our experienced workforce comprising of professionals from the fields of electrical engineering, mechanical engineering, civil engineering, substation automation systems and substation ...



[How Circuit Breaker Works in Substation?](#)

Aug 14, 2024 · Learn about circuit breakers in substations, their types, operation, and role in power safety.



Contact Us

For technical specifications, project proposals, or partnership inquiries, please visit:
<https://www.eiei.pl>

Scan QR Code for More Information



<https://www.eiei.pl>