

# Central inverter voltage





## Overview

---

fieldbus connection and integrated DC cabinets. The inverters are customized and configured to meet end user needs and are available with short delivery times.

What is a central inverter system?

Discover our solar energy solutions for your central inverter systems design. Central inverters convert power on multiple strings of connected solar panels. They are rated from around 600 kW to 4000 kW. Central inverters typically rely on single-stage power conversion, and most inverter designs are transformer-based or isolated.

How much power does a central inverter use?

The power of the central inverter equipment is between 50 kW and 630 kW, and the system topology adopts the first stage power electronics to convert direct current into alternating current, and the full bridge central inverter is converted. In the case of power frequency isolation transformers, the protection level is generally IP 20.

What are the features of central inverter?

3. Features of central inverter Its biggest feature is the high power and low cost of the system. However, due to the fact that the output voltage and current of different PV strings are often not fully matched (especially when the PV strings are partially blocked due to clouds, shadows, stains, etc.).

What are ABB central inverters?

fed into the power network. ABB central inverters are ideal for large photovoltaic power plants and medium sized power plants installed in commercial or industrial buildings. High efficiency, proven components, compact and modular design and a host of life cycle services ensures ABB central inverters provide a rapid return on investment.



## Central inverter voltage

---



### [Modern and Popular Central Inverters for ...](#)

Dec 25, 2023 · A central inverter is relatively larger in terms of its physical size, power rating capacity, and maximum input voltage among other ...

### [Comparing Central vs String Inverters for ...](#)

May 14, 2024 · This article will overview perhaps the most essential components in a PV system, inverters, and compare the two main options ...

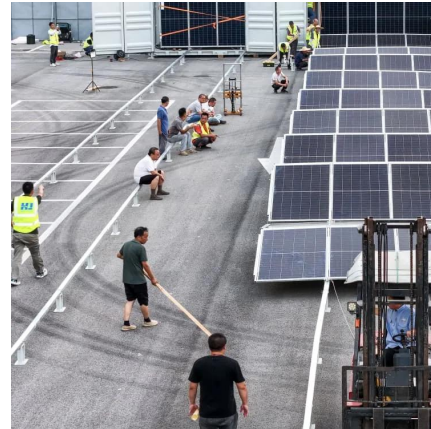


### [Central inverter introduction and functional ...](#)

Feb 12, 2024 · The MPPT voltage range of the central inverter is narrow, generally 450-820V, and the module configuration is not flexible. In areas ...

### [Top 10 Central Inverters for Utility-Scale Solar ...](#)

Oct 9, 2024 · Central inverters play a critical role in utility-scale solar photovoltaic (PV) installations, converting the direct current (DC) ...



### Sungrow PV Central Inverter , From 500 kW to 6.8 MW

Sungrow's PV central inverters convert direct current (DC) into alternating current (AC), with capacities ranging from 500 kW to 6.8 MW, making them suitable for utility-scale projects.



### Central inverter introduction and functional analysis - ...

Feb 12, 2024 · The MPPT voltage range of the central inverter is narrow, generally 450-820V, and the module configuration is not flexible. In areas with a lot of fog on rainy days, power ...



### SUNNY CENTRAL 4000 UP-US / 4200 UP-US / 4400 UP ...

Feb 3, 2025 · The new Sunny Central: more power per cubic meter With an output of up to 4600 kVA and system voltages of 1500 V DC, the SMA central inverter allows for more efficient ...





## ABB central inverters

Oct 4, 2013 · Effective connectivity ABB's transformerless central inverter series enables system integrators to design the solar power plant using a combination of different power rating ...



## **Modern and Popular Central Inverters for Utility-Scale Solar ...**

Dec 25, 2023 · A central inverter is relatively larger in terms of its physical size, power rating capacity, and maximum input voltage among other characteristics than a string inverter. ...

## FRONIUS CL CENTRAL INVERTER

This makes the Fronius CL the perfect central inverter for PV systems of up to several hundred kilowatts(kW). Other advantages: precise maximum power point tracking of the Fronius ...



## Central inverter solutions

Overview Central inverters convert power on multiple strings of connected solar panels. They are rated from around 600 kW to 4000 kW. Central ...



## Top 10 Central Inverters for Utility-Scale Solar PV Projects

Oct 9, 2024 · Central inverters play a critical role in utility-scale solar photovoltaic (PV) installations, converting the direct current (DC) generated by large solar arrays into alternating ...



## Comparing Central vs String Inverters for Utility-Scale PV ...

May 14, 2024 · This article will overview perhaps the most essential components in a PV system, inverters, and compare the two main options dominating today's utility-scale market: central ...

## [ABB central inverters PVS800 - 500 to 1000](#)

Apr 21, 2020 · Solar inverters from ABB ABB central inverters are ideal for large PV power plants but are also suitable for large-sized power plants installed in commercial or industrial buildings. ...



## [Central inverter solutions](#)

Overview Central inverters convert power on multiple strings of connected solar panels. They are rated from around 600 kW to 4000 kW. Central inverters typically rely on single-stage power ...



## Contact Us

---

For technical specifications, project proposals, or partnership inquiries, please visit:  
<https://www.eiei.pl>

### Scan QR Code for More Information



<https://www.eiei.pl>