

Can solar energy with high wattage charge quickly





Overview

What makes a solar panel charge faster?

Just clean, steady power on your terms. First up, solar panel wattage. Bigger wattage = more juice, faster charge. A 200W panel charges quicker than a 100W one, simple math. Then there's sunlight hours. Full sun?

You're golden. Clouds or shade?

That charge slows down like a Monday morning. Battery size matters too.

Why do solar panels take so long to charge?

Clean panels, proper tilt, and correct cable size = faster charging. Charging time isn't just a number—it's your whole solar setup's rhythm. If your battery takes forever to charge, you're either wasting sunlight or running short on power when you need it. Fast charging means you can store more energy during peak sun hours.

How do you calculate solar panel charging time?

Here's the cheat code: $\text{Charging Time} = \text{Battery Capacity (Wh)} \div \text{Solar Panel Output (W)}$ Start with your battery's capacity in watt-hours (Wh). If it's in amp-hours (Ah), just multiply by the voltage. Example: A 12V, 100Ah battery = 1200Wh. Next, look at your panel's output in watts. But don't just take the panel's sticker number.

How many watts a day does a 200W solar panel produce?

First up, figure out battery watt-hours: $12\text{V} \times 100\text{Ah} = 1,200\text{Wh}$. That's your energy goal. Now, your 200W panel produces 200Wh per hour in ideal sun (say, 5 hours daily). That's 1,000Wh a day. To fully charge the 1,200Wh battery?

About 1.2 days of good sun. But hold up—solar isn't 100% efficient.



Can solar energy with high wattage charge quickly



[Can Too Much Watts From A Solar Panel Cause Problems](#)

Solar panels are a great way to generate clean energy, but they can sometimes produce too much power. This article will explore whether too much watts from a solar panel can cause ...

[Can solar energy with high wattage charge quickly](#)

The global commercial and industrial solar energy storage battery market is experiencing unprecedented growth, with demand increasing by over 400% in the past three years. Large ...



[How Fast Can A Solar Panel Charge A Battery: Tips To ...](#)

Nov 29, 2024 · Discover how fast solar panels can charge batteries in this comprehensive guide. We break down the factors affecting charging speed, such as panel types, battery ...



[How to achieve fast charging with solar energy , NenPower](#)

Oct 11, 2024 · Several elements influence the speed at which solar energy can charge devices, starting with the quality and efficiency of the solar panels utilized. High-efficiency panels ...



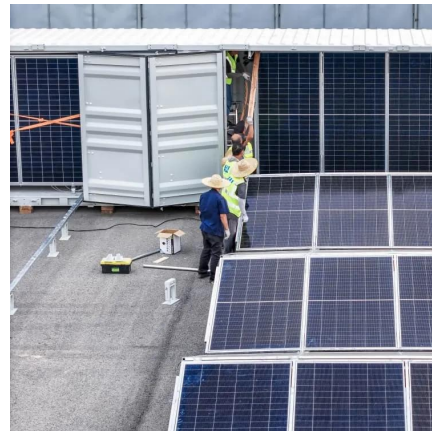
[How many watts does a solar panel charge ...](#)

Jan 14, 2024 · The efficacy of solar energy in charging systems is a multifaceted domain that involves different technological, environmental, ...



[Does a bigger solar panel charge faster?](#)

May 3, 2025 · Yes, larger solar panels can charge faster under equivalent conditions due to higher wattage output. A 300W panel generates more current than a 100W panel, reducing ...



[How to achieve fast charging with solar ...](#)

Oct 11, 2024 · Several elements influence the speed at which solar energy can charge devices, starting with the quality and efficiency of the solar ...





Solar Panel Charge Time Calculator: Accurately Estimate How ...

Jun 11, 2025 · What Affects Solar Battery Charging Time? Several factors influence how long it takes a solar battery to be charged. Below are details on some of the most impactful. Panel ...



[How Fast Solar Panel Charge Battery for Optimal Energy ...](#)

Dec 27, 2024 · Discover how fast solar panels can charge batteries and what factors influence their efficiency. This article delves into various solar panel types, key components of solar ...

[Solar Panel Charge Time Calculator: ...](#)

Jun 11, 2025 · What Affects Solar Battery Charging Time? Several factors influence how long it takes a solar battery to be charged. Below are ...



[How many watts does a solar panel charge quickly?](#)

Jan 14, 2024 · The efficacy of solar energy in charging systems is a multifaceted domain that involves different technological, environmental, and practical strategies. Understanding how ...



4 Factors That Affect Solar Charging Speed , The Enterprise ...

2 days ago · High solar input capacity: Premium models accept 2000W-6000W of solar input, dramatically cutting charge times compared to entry-level units. Hybrid charging: Some ...



[Can Too Much Watts From A Solar Panel](#)

...

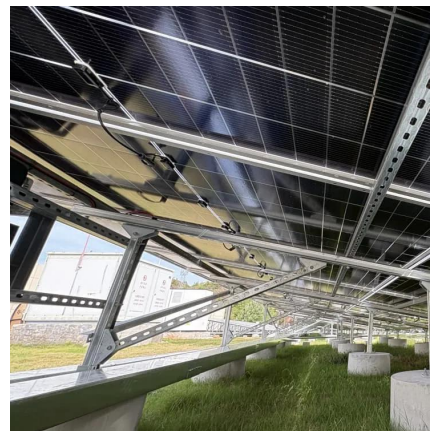
Solar panels are a great way to generate clean energy, but they can sometimes produce too much power. This article will explore whether too

...

[How to Calculate Charging Time of Battery by ...](#)

Jul 18, 2025 · Whether you're powering up a home system or a weekend camper, knowing the math behind charging time saves you stress--and

...



[How to Calculate Charging Time of Battery by Solar Panel](#)

Jul 18, 2025 · Whether you're powering up a home system or a weekend camper, knowing the math behind charging time saves you stress--and surprises. Let's break it down into simple ...



Contact Us

For technical specifications, project proposals, or partnership inquiries, please visit:
<https://www.eiei.pl>

Scan QR Code for More Information



<https://www.eiei.pl>