

Can a 24 volt inverter be used in a 27 volt car





Overview

Can you use a power inverter with a car battery?

Using a power inverter with a car battery is an excellent way to convert DC power into AC power, enabling you to run appliances and devices while on the road. Whether you're camping, working on-the-go, or simply need to power a device while driving, understanding how to use a power inverter with a car battery can be incredibly useful.

How much inverter power can a car battery support?

There is a theoretical limit to the amount of inverter power that can be supported by an automotive battery. Theoretically, the maximum supported inverter power can be calculated by multiplying the battery capacity (Ah) by the battery voltage (V) multiplied by the discharge multiplier (C-rate).

Can a 12 volt car battery support a high power inverter?

Typically, a 12-volt car battery can support an inverter with a power range of about 150 watts to 1500 watts. Please note, however, that car batteries are not suitable for driving high power inverters for extended periods of time, which may cause damage to the battery.

How long does a power inverter run on a car battery?

The runtime of a power inverter on a car battery depends on the battery's capacity (measured in amp-hours) and the power demands of the devices being used. For example, if you use a 100W device, a fully charged 12V car battery with 50Ah capacity could run the device for around 4-5 hours.



Can a 24 volt inverter be used in a 27 volt car



[9 Best Car Power Inverters](#)

Jan 6, 2025 · These plugs rely on a device called an "inverter" to create household alternating-current power from the direct ...

[CAN INVERTER CHARGE CAR BATTERY?](#)

Yes, It Can: An inverter can charge a car battery, but it requires the right setup, including a compatible charger and adequate power source. Power Source Needed: The inverter must be ...

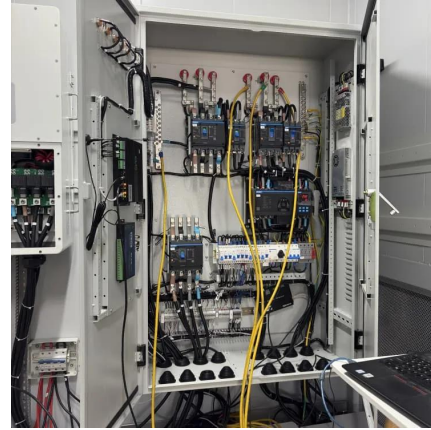


[How Big of an Inverter Can My Car Battery Handle?](#)

Mar 26, 2025 · This guide is designed to help you make an informed choice about how much power you can use from your car's battery to power an inverter, taking into account a number ...

[How to Use a Power Inverter with a Car Battery](#)

Feb 14, 2025 · Learn how to use a power inverter with a car battery efficiently; the process, safety tips, and best practices for seamless power conversion.



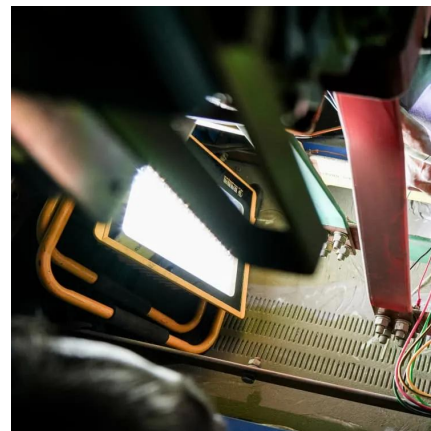
[What size inverter can you run off a car battery?](#)

Aug 11, 2025 · You can typically run an inverter up to about 1500 watts off a standard car battery without issues. However, consider the battery's capacity and discharge rate



Power Inverters for Cars: Which Type Do You Need and What Can ...

Power inverters can be incredibly useful while traveling in your car. Read on to learn more about which type you need and what it can do for you.



[Power Inverters for Cars: Which Type Do You ...](#)

Power inverters can be incredibly useful while traveling in your car. Read on to learn more about which type you need and what it can do for you.





[Car Battery Inverter Guide: Power Your Devices Anywhere ...](#)

Jun 24, 2025 · Learn how to safely use a car battery inverter, how long it lasts, what battery to choose, and key tips for powering devices off-grid or during outages.



[Can I Charge a Car Battery with an Inverter?](#)

Mar 19, 2025 · You can't use an inverter to charge a car battery directly, because the inverter outputs AC power, and battery charging requires ...

[Can I Charge a Car Battery with an Inverter?](#)

Mar 19, 2025 · You can't use an inverter to charge a car battery directly, because the inverter outputs AC power, and battery charging requires stable DC power.



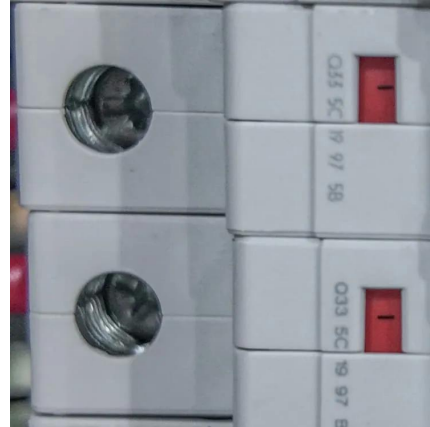
[How Big of an Inverter Can My Car Battery ...](#)

Mar 26, 2025 · This guide is designed to help you make an informed choice about how much power you can use from your car's battery to power an ...



[Inverter for Car: Everything You Need to Know Before You ...](#)

Jun 17, 2025 · Power up on the go with an inverter for car--discover how to use it safely, what to run, and how to protect your battery. A must-read for every driver!



[9 Best Car Power Inverters](#)

Jan 6, 2025 · These plugs rely on a device called an "inverter" to create household alternating-current power from the direct-current power supplied throughout the vehicle. These devices ...

[Can You Use a 24 volt inverters With a 12V Battery System?](#)

Jul 19, 2025 · Pairing a 24 volt inverter directly with a lone 12 V battery is a no-go--it starves the inverter and can wreck both battery and electronics. The safe routes are simple: wire two 12 V ...



Contact Us

For technical specifications, project proposals, or partnership inquiries, please visit:
<https://www.eiei.pl>



Scan QR Code for More Information



<https://www.eiei.pl>