

Berney solar Wide Voltage 10kw Single Phase Inverter





Overview

What is a hybrid solar inverter?

Single phase 300-900 volt DC input, hybrid PV solar inverter operates at 50Hz/60Hz low frequency, 10kW rated capacity, LCD main parameters. Hybrid inverter with wide MPPT voltage 350-850V/ 400-800V, pure sine wave output waveform, easy to install, it is a perfect solution for solar power system.

What is a 10kW single-phase inverter based on a GaN device?

A 10kW single-phase reference design based on GaN devices Figure 3 is a schematic representation of the converter. DC/DC Boost with MPPT1 Input range: 50-500V ISC: 18A Max. DC current: 14A Figure 3. Single-phase string inverter reference design block diagram Two boost converters for two independent string inputs, each 5kW rated (134kHz).

What is SPI series solar inverter?

Time-slot function to save cost with peak-valley. SPI series is a solar hybrid inverter integrating solar energy storage, mains charging energy storage, and AC sine wave output. It adopts DSP control and state-of-art control algorithm, ensuring high response speed, high reliability, and high industrialization standards.

What is a sunsynk 10K sg02lp1 hybrid inverter?

SUNSYNK-10K-SG02LP1 - 10kW Single-Phase Hybrid Inverter The SUNSYNK 10kW Single-Phase Hybrid Inverter offers a powerful, all-in-one energy solution that intelligently controls the flow of power between solar panels, batteries, and the grid.



Berney solar Wide Voltage 10kw Single Phase Inverter



[10kW Hybrid Solar Inverter](#)

Single phase 300-900 volt DC input, hybrid PV solar inverter operates at 50Hz/60Hz low frequency, 10kW rated capacity, LCD main parameters. Hybrid inverter with wide MPPT ...

[Design considerations of a 10kW single-phase string ...](#)

Mar 21, 2025 · Design considerations of a 10kW single-phase string inverter based on TI GaN FETs Riccardo Ruffo and Vedatroyee Ghosh Energy sustainability and security concerns are ...



[10kW Hybrid Solar Inverter](#)

Single phase 300-900 volt DC input, hybrid PV solar inverter operates at 50Hz/60Hz low frequency, 10kW rated capacity, LCD main parameters. ...

[10KW Single Phase Split Phase Pure Sine ...](#)

...

Nov 7, 2025 · SPI series is a solar hybrid inverter integrating solar energy storage, mains charging energy storage, and AC sine wave output. It ...



[SRNE 10KW Single Phase Inverter 48V SPI...](#)

Dec 5, 2025 · o Supports single-phase parallel and parallel three-phase pure sine wave output.
o Stand-alone or parallel systems support 200, 208, ...



[10kw Inverter Single Phase](#)

A 10kW single-phase inverter is a powerful electrical device that converts direct current (DC) into alternating current (AC) at a standard single-phase voltage, commonly used in residential, ...



[10kW Single Phase Grid Tie Solar Inverter](#)

Single phase 180-500-volt DC to 230 / 240-volt AC on grid inverter for sale. 50 Hz or 60 Hz low frequency can be chosen. 10kW rated capacity, transformerless design and high power ...





[SUNSYNK 10kW Inverter 1-Phase - Efficient ...](#)

The SUNSYNK 10kW Single-Phase Hybrid Inverter offers a powerful, all-in-one energy solution that intelligently controls the flow of power between ...



[SUNSYNK 10kW Inverter 1-Phase - Efficient Hybrid Power ...](#)

The SUNSYNK 10kW Single-Phase Hybrid Inverter offers a powerful, all-in-one energy solution that intelligently controls the flow of power between solar panels, batteries, and the grid.

[Berney Photovoltaic Wide Voltage 10kw Single Phase ...](#)

A single phase 10kW solar inverter is a device that converts 180-500 volt DC power from solar panels into 230/240 volt AC power for use on the grid. It operates at 50Hz/60Hz low ...



SRNE 10KW Single Phase Inverter 48V SPI 10KW Hybrid Off-grid Inverter

Dec 5, 2025 · o Supports single-phase parallel and parallel three-phase pure sine wave output.
o Stand-alone or parallel systems support 200, 208, 220, 230 and 240Vac voltage levels



[INVT Solar XG 3-10kW Single-phase On-grid ...](#)

Jan 22, 2025 · The XG3-10KTL single-phase grid-tied inverter supports a string current of 20A and is compatible with 210mm large modules. It is ...

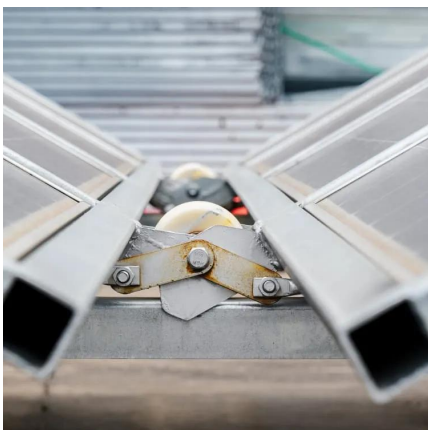
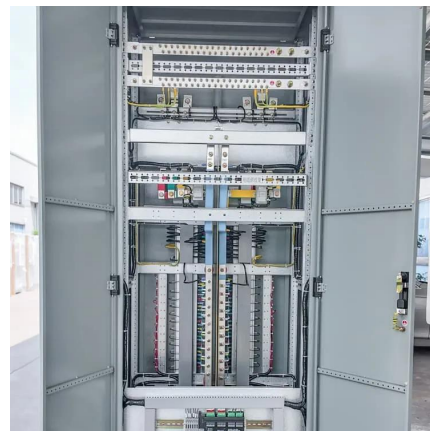


[INVT Solar XG 3-10kW Single-phase On-grid Solar Inverter](#)

Jan 22, 2025 · The XG3-10KTL single-phase grid-tied inverter supports a string current of 20A and is compatible with 210mm large modules. It is specifically designed for residential ...

[7-10K_Solis Single Phase Grid-Tied Inverter](#)

7-10kW Single-phase series string inverter bring more power generation to users by adopting three MPPT design. Smaller size, lighter weight, the simpler installation, more convenient ...



[10KW Single Phase Split Phase Pure Sine Wave Solar Inverter](#)

Nov 7, 2025 · SPI series is a solar hybrid inverter integrating solar energy storage, mains charging energy storage, and AC sine wave output. It adopts DSP control and state-of-art control ...



Contact Us

For technical specifications, project proposals, or partnership inquiries, please visit:
<https://www.eiei.pl>

Scan QR Code for More Information



<https://www.eiei.pl>