

# **Belgian power and signal base station**





## Overview

---

Who produces electricity in Belgium?

Most Belgian electricity is produced by Electrabel, a subsidiary of GDF Suez (now Engie) a, which also operates all the nuclear plants. The transmission system operator (TSO) is Elia. Belgium has two commercial nuclear power plants with operable reactors. Both power plants are operated by ENGIE Electrabel.

Who operates a nuclear power plant in Belgium?

The transmission system operator (TSO) is Elia. Belgium has two commercial nuclear power plants with operable reactors. Both power plants are operated by ENGIE Electrabel. A small prototype reactor, BR-3, was operated by SCK CEN until it was shut down in 1987. Operable reactors in Belgium.

How many power plants are there in Belgium?

□ Stats □ Belgium □ Power Plants All 134 power plants in Belgium

Name	English Name	Operator	Output	Source	Method	Wikidata
Centrale nucléaire de Tihange	Tihange Nuclear Power Station	Engie Electrabel	3,008 MW	nuclear fission	Q1739481	
Coo - Trois-Ponts	1,164 MW hydro water-pumped-storage	Q1639208	Centrale TGV Seraing.			

How is electricity delivered in Belgium?

Delivery takes place in kilowatt per quarter hour. Contracts are for physical delivery of power to and from the high voltage grid of Belgium. Delivery is made equally each hour throughout the contract delivery period from 00:00 (CET) on the first day of the month until 24:00 (CET) on the last day of the month.



## Belgian power and signal base station

---

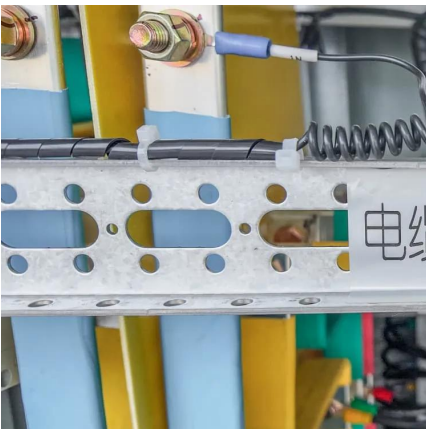


### [Belgian Power Base Futures](#)

Nov 13, 2025 · Contracts are for physical delivery of power to and from the high voltage grid of Belgium. Delivery is made equally each hour throughout the contract delivery period from ...

### [Country Nuclear Power Profiles](#)

Sep 12, 2025 · Country Nuclear Profile Summary  
This report provides information on the status and development of the nuclear power programme in Belgium, including factors related to the ...



### [#nuclear , Belgian Nuclear Forum](#)

16 hours ago · The government has confirmed that the country's first small modular reactor (SMR) power station will be built at Wylfa, on the north coast of Anglesey.

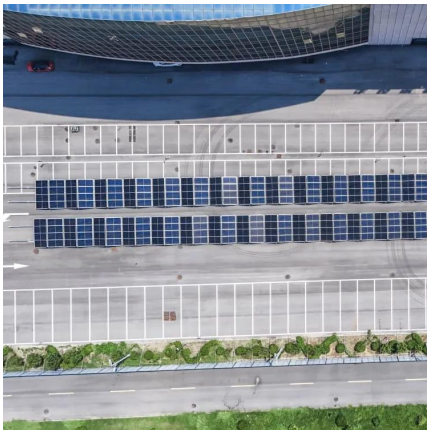
## Power Base Station

The transmitter characteristics define RF requirements for the wanted signal transmitted from the UE and base station, but also for the unavoidable unwanted emissions outside the transmitted ...



### [Power Plants in Belgium \(Map\) , database.earth](#)

Power Plants in Belgium Belgium has 69 utility-scale power plants in operation, with a total capacity of 13404.8 MW.



## Our infrastructure

A cornerstone for our economic development and well-being Elia's high-voltage grid is a cornerstone of the Belgian energy system. Having high-performance electricity infrastructure ...



### [Nuclear Power in Belgium](#)

3 days ago · Belgium has three operable nuclear reactors. Belgium's first commercial nuclear power reactor began operating in 1974. A 2003 federal law requiring the phase-out of nuclear ...





## Highlights & main technical directions of SC 00

Jul 25, 2018 · o The electricity grid in Belgium is sub-divided into transmission grids (very high and high voltage) and distribution grids (medium and low voltage)



## Grid Map

Web site created using create-react-appENTSO-E Transmission System Map This map is a comprehensive illustration of the transmission system network operated by members of the ...

## Belgium Power Plants

2 days ago · List of power plants in Belgium from OpenStreetMap



## Contact Us

---

For technical specifications, project proposals, or partnership inquiries, please visit:  
<https://www.eiei.pl>



## Scan QR Code for More Information



<https://www.eiei.pl>