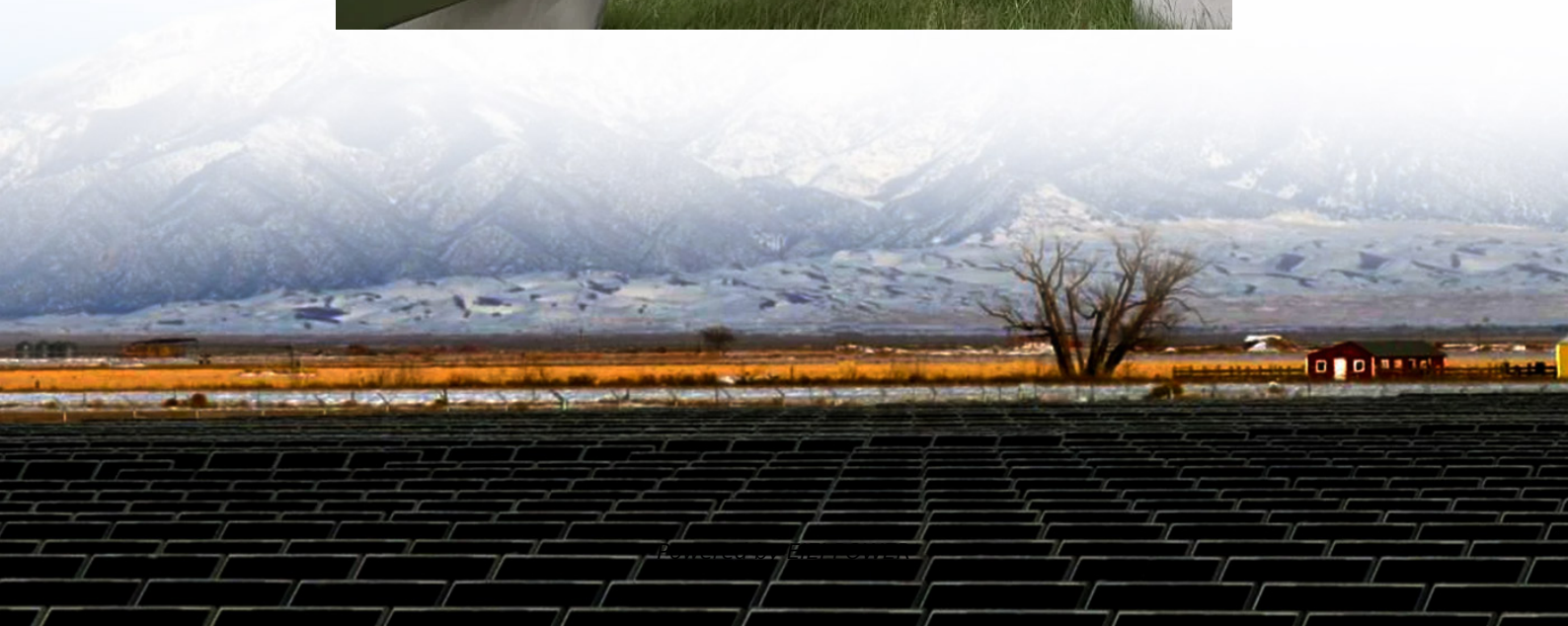
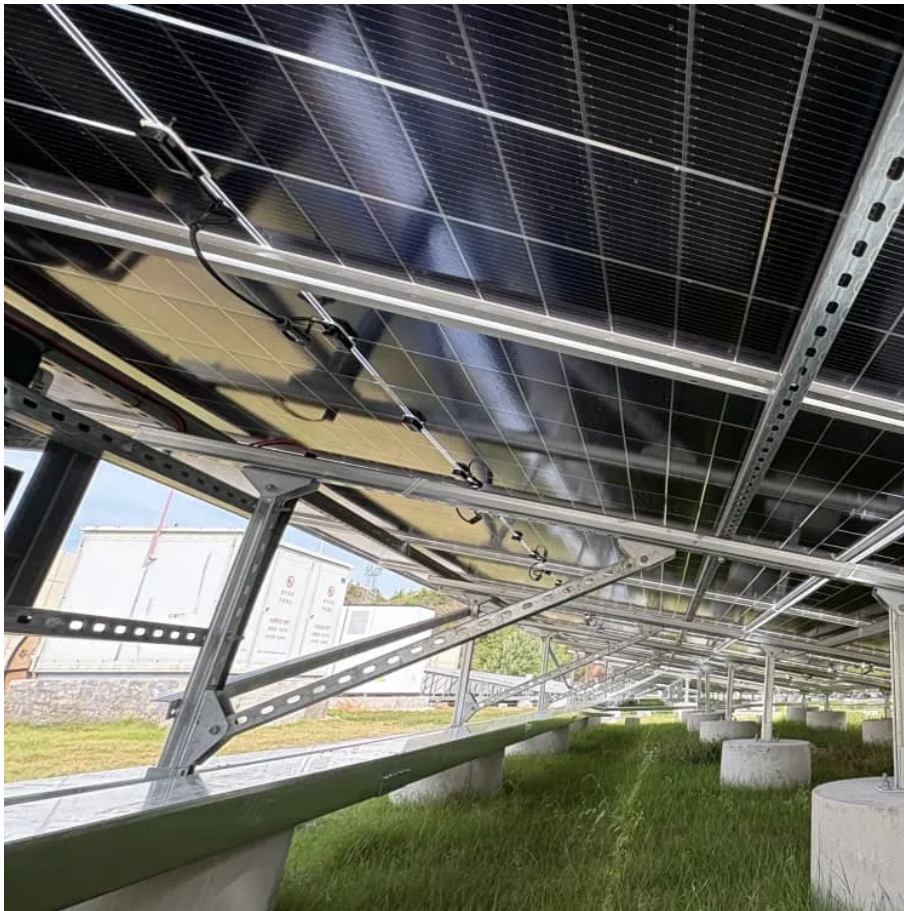


Battery inverter matching





Overview

Are all solar inverters compatible?

But not all inverters can manage both solar power generation and battery charging/discharging. If your current inverter isn't compatible, you might need to replace it or add additional components, which can increase the overall system cost and complexity. 1. AC-Coupled Systems.

Does a solar inverter need a battery?

Solar energy systems without batteries send excess power to the grid. When you add a battery, you want to store that excess energy for later use, during nighttime or power outages. But not all inverters can manage both solar power generation and battery charging/discharging.

How to connect a lithium ion battery to an inverter?

1. Choose the Right Location : Select a well-ventilated area for both your battery and inverter. Lithium-ion batteries need proper ventilation to avoid overheating. Make sure the space is dry and not prone to extreme temperatures. 2. Wiring : Connect the battery to the inverter using the appropriate cables and connectors.

How to integrate battery storage and goodwe inverters?

Now that you understand the basics of battery storage and GoodWe inverters, here's a step-by-step guide on how to integrate them : 1. Choose the Right Location : Select a well-ventilated area for both your battery and inverter. Lithium-ion batteries need proper ventilation to avoid overheating.



Battery inverter matching



[How to Match Inverters and Batteries: Technical Tips](#)

Oct 15, 2025 · A mismatch between the two can lead to poor efficiency, inverter shutdowns, or even battery damage. This article explains -- with open and verifiable data -- how to select ...

[Inverter to Battery Matching Calculator - SolarMathLab](#)

Nov 29, 2025 · Calculate the ideal battery capacity for your inverter with our Inverter to Battery Matching Calculator. Ensure safe voltage, current draw, and runtime for solar systems.



[Compatibility Analysis Between Lithium Batteries and Inverters ...](#)

May 21, 2025 · Ensuring compatibility between lithium batteries and inverters involves multi-dimensional coordination across electrical parameters, communication, and environmental ...



[Battery and Inverter Sizing Guide 2025: How to Match Solar ...](#)

Nov 11, 2025 · Learn how to size and pair a battery with your solar inverter in 2025. Discover key ratios, examples, and Growatt solutions for optimal solar + storage system design.



[Matching Solar Inverters with Battery ...](#)

May 20, 2025 · In this in-depth guide, we break down everything you need to know about matching solar inverters with battery systems. From ...



[How to Achieve Perfect Battery-Inverter Matching ... Max ...](#)

Dec 4, 2025 · A professional guide on battery and inverter compatibility. Learn how to optimize voltage, power, and communication matching for home, commercial, and off-grid energy systems.



[The Perfect Match: A Guide to Pairing Energy Storage Batteries ...](#)

Nov 22, 2025 · Match Voltage: 48V inverter with a Lifepo4 48v battery. Size for Current: Use the power formula to ensure your battery's current delivery (Ah rating) exceeds the inverter's ...





[Upgrade Smarter: Match Batteries, Inverters, and Panel Specs](#)

Aug 22, 2025 · Boost your solar upgrade! Learn how to perfectly match batteries, inverters, and panel specs for peak efficiency and lasting energy independence. Get the ultimate guide to a ...



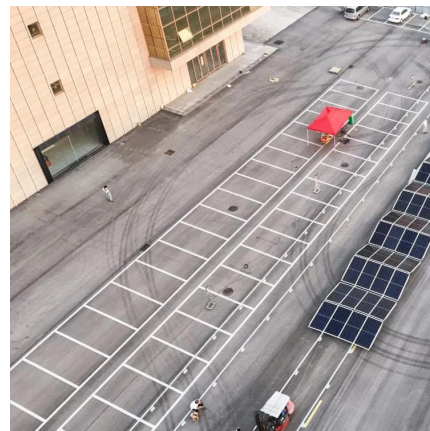
[Matching Inverter \(kW\) with the right Battery Bank](#)

Matching your inverter and battery isn't guesswork. Learn how to size battery voltage and amp-hour (Ah) correctly for your inverter's current demand -- with real examples and formulas that ...



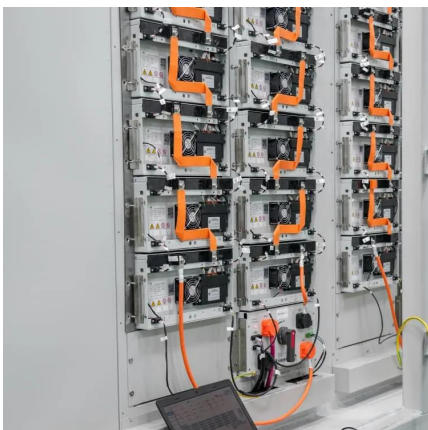
[Matching Solar Inverters with Battery Systems: What You ...](#)

May 20, 2025 · In this in-depth guide, we break down everything you need to know about matching solar inverters with battery systems. From understanding different inverter types ...



[The Ultimate Guide to Matching Your Lithium Battery and Inverter](#)

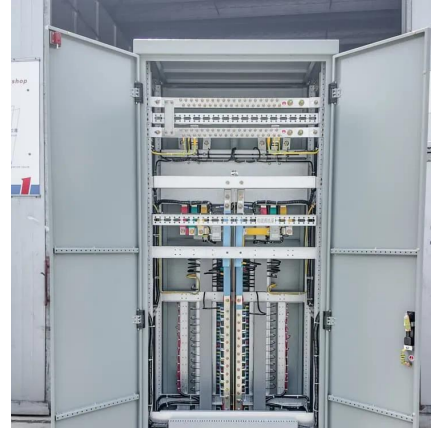
Dec 8, 2025 · The inverter's voltage must match the battery system's nominal voltage. 12V, 24V, 48V--they have to be the same. You can't run a 12V battery on a 48V inverter.





[Compatibility Analysis Between Lithium ...](#)

May 21, 2025 · Ensuring compatibility between lithium batteries and inverters involves multi-dimensional coordination across electrical parameters, ...



Contact Us

For technical specifications, project proposals, or partnership inquiries, please visit:
<https://www.eiei.pl>

Scan QR Code for More Information



<https://www.eiei.pl>