

Base station power supply connected to bbu





Overview

What is a battery backup unit (BBU) & a power supply unit (PSU)?

The pressure to meet this demand is most apparent in the design of Battery Backup Units (BBUs) and Power Supply Units (PSUs), where connectors must support high currents, dense packaging, hot-swap functionality, and low resistance, all while maintaining mechanical robustness and signal integrity.

What is a BBU & how does it work?

BBUs are stacked up to provide backup power to the UPS. These are monitored by the Power Monitoring Interface (PMI), which is connected to a power shelf comprising Power Supply Units (PSUs).

What is a baseband unit (BBU)?

The baseband unit (BBU) is a crucial component in mobile base stations, handling tasks like signal processing, resource allocation, and protocol management to ensure efficient communication between mobile devices and networks. It also ensures security through encryption and manages interference and network operations.

What is auxiliary power in Analog Devices battery backup unit (BBU)?

Part 5 of this article series explains the significance of auxiliary power within the Analog Devices battery backup unit (BBU) reference design. Auxiliary power encompasses supplementary voltage rails, provided alongside the primary power output, to bolster numerous components and functionalities.



Base station power supply connected to bbu



Baseband Unit (BBU)

The baseband unit (BBU) is a crucial component in mobile base stations, handling tasks like signal processing, resource allocation, and protocol management to ensure efficient ...



[Critical Challenges of BBU and PSU Design in OCP-based ...](#)

Dec 2, 2025 · Overview The white paper discusses the evolving challenges in the design of Battery Backup Units (BBUs) and Power Supply Units (PSUs) within modern data centers, ...



Battery Backup Unit (BBU) Solutions for ICT Power Protection ...

The enerXBar series combines a switched-mode power supply with a built-in BBU, eliminating the need for external UPS systems and enhancing energy efficiency. IT managers around the ...

[\(5G\) Communication Power Supply Solution](#)

In addition, for 3-sector base stations equipped with excess channel boards and excess baseband processing equipment, baseband pool sharing technology can be used to set the excess ...



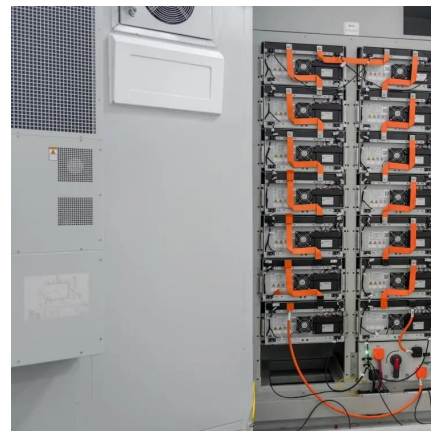
Power infrastructure in the age of artificial intelligence ...

Jun 12, 2025 · Reference website: Energy storage system (ESS) using lithium-ion batteries UPSs
Uninterruptible Power Supplies (UPSs) refer to devices that provide power for durations ...



[Robust BBU and PSU Interconnects for OCP ...](#)

Apr 12, 2023 · Amphenol's advanced power interconnect solutions address the critical challenges of BBU and PSU design in OCP-based data ...



[An Introduction to 5G and How MPS Products Can ...](#)

Feb 11, 2025 · This article described the basics of 5G and introduced two MPS parts -- the MPQ8645 and MP87190 -- that can be used to improve the AAU or BBU architecture within a ...



[Smart Battery Backup for Uninterrupted ...](#)

This proactive approach elevates the reliability and preparedness of the PSU, ensuring uninterrupted power delivery and significantly diminishing the ...

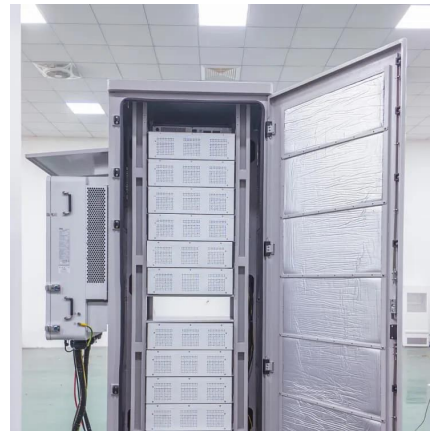


Smart Battery Backup for Uninterrupted Energy Part 5: Auxiliary Power

This proactive approach elevates the reliability and preparedness of the PSU, ensuring uninterrupted power delivery and significantly diminishing the risk of system failures. The ...

[Power infrastructure in the age of artificial ...](#)

Jun 12, 2025 · Reference website: Energy storage system (ESS) using lithium-ion batteries
UPSs
Uninterruptible Power Supplies (UPSs) refer to ...



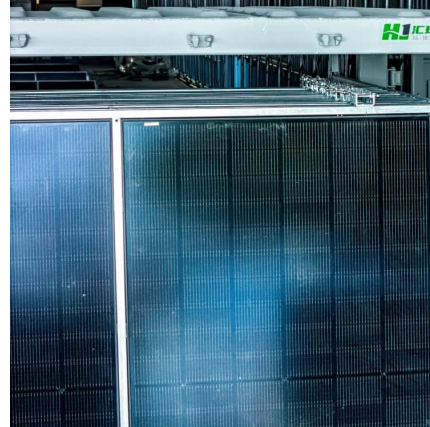
[Optimal Backup Power Allocation for 5G Base Stations](#)

May 17, 2022 · us on the backup power allocation of 5G networks in this work. Moreover, if the network adopts a C-RAN architecture where many BBUs are centralized, considering that the ...



[Battery Backup Unit \(BBU\) Solutions for ICT ...](#)

The enerXBar series combines a switched-mode power supply with a built-in BBU, eliminating the need for external UPS systems and enhancing ...



[Robust BBU and PSU Interconnects for OCP-Based Data ...](#)

Apr 12, 2023 · Amphenol's advanced power interconnect solutions address the critical challenges of BBU and PSU design in OCP-based data centers. Explore the interconnects that deliver ...

[Auxiliary power system in a smart battery backup unit](#)

Aug 28, 2024 · This article explains the significance of auxiliary power within the Analog Devices battery backup unit (BBU) reference design. Auxiliary power encompasses supplementary ...



[Auxiliary power system in a smart battery ...](#)

Aug 28, 2024 · This article explains the significance of auxiliary power within the Analog Devices battery backup unit (BBU) reference design. Auxiliary ...



Baseband Unit (BBU)

The baseband unit (BBU) is a crucial component in mobile base stations, handling tasks like signal processing, resource allocation, and protocol ...



Contact Us

For technical specifications, project proposals, or partnership inquiries, please visit:
<https://www.eiei.pl>

Scan QR Code for More Information



<https://www.eiei.pl>