

Base station communication tower safety distance





Overview

Is it possible to predict a safe distance from cell towers?

It is also difficult to predict a safe distance from cell towers. For example, cell towers are designed to transmit most of their radio frequency (RF) energy horizontally. Some areas below the tower may have lower levels than locations farther away that are more in line with the vertical height of the antennas.

How far does a cell phone tower fall from a base station?

In most cases, having a cell phone tower on the roof of your building will create a shadow zone immediately underneath it. This zone is therefore exposed to much less radiation. Consequently, a tower's primary "radiation lobe" (main beam) falls around 50-300 meters (0.03 - 0.18 miles) from the base station mast at a 5-10° angle.

How far away are mobile towers safe?

The distance needed to reduce exposures down to the General Public Precautionary Level of 100 microwatts per meter squared ($\mu\text{W}/\text{m}^2$) is often around a quarter of a mile (1320 feet or 400 meters) or more. Thus, If you find mobile towers located a minimum of 400 meters (0.24 miles) away, you are most likely safe.

How much exposure can a radio base station have?

On the ground, in houses, and other places where people reside, the exposure levels from radio base stations are normally below 1 percent of the limits. Only in the close vicinity of the antennas can the exposure limits sometimes be exceeded.



Base station communication tower safety distance



[Mobile phone base stations: radio waves and health](#)

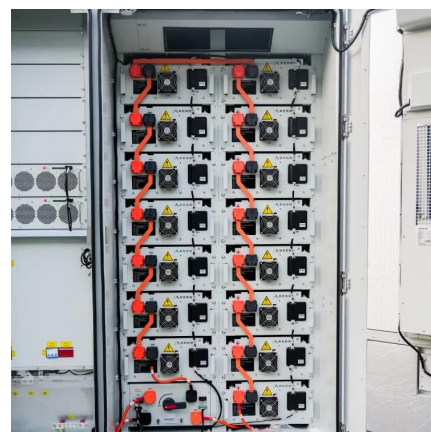
Summary Mobile Network Technology Exposure Guidelines Health-Related Evidence and Reviews Protection Measures Monitoring of Exposures Base stations transmit and receive radio waves to connect the users of mobile phones and other devices to mobile communications networks. The strength of the radio waves from base station antennas reduces rapidly with increasing distance and the levels at locations where the public can be exposed tend to be small. The health effects of exposure to See more on gov.ukEMF Center

What Distance is Safe? - EMF Center

Safe Distance from Cell Towers... It is also difficult to predict a safe distance from cell towers. For example, cell towers are designed to transmit most ...

[Safe EMF Distance From Cellphone Towers Calculator](#)

2 days ago · Why Distance From Cell Towers Matters Radiofrequency radiation from cell towers decreases rapidly with distance. However, close proximity to towers--especially those using ...



[How Close Is Too Close to a Cell Phone Tower?](#)

Mar 20, 2025 · In today's hyper-connected world,



cell phone towers are an essential part of daily life, helping to provide reliable cellular service and internet access. While we depend on these ...

Safe EMF Distance From Cellphone Towers ...

2 days ago · Why Distance From Cell Towers Matters Radiofrequency radiation from cell towers decreases rapidly with distance. However, close ...



Evaluated minimum safe distances for mobile ...

Aug 5, 2024 · In Table 1 are presented the minimum safe distances for GSM 900, GSM 1800 and 3G base stations, in terms of public and occupational ...

What is the Safe Distance From Cell Towers?

What's the Safe Distance From a Mobile Phone Tower? Radiation energy from a mobile tower decreases with distance. It is usually at its strongest ...



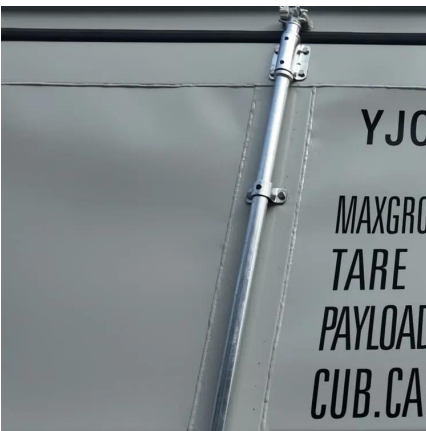


How Far Should You Live from a Cell Phone Tower? Insights ...

May 30, 2025 · Explore how far you should live from a cell phone tower for safe EMF exposure levels. Learn what Israeli, European, and U.S. studies say about health risks and ...

Mobile phone base stations: radio waves and health

Jul 30, 2024 · Summary Base stations transmit and receive radio waves to connect the users of mobile phones and other devices to mobile communications networks. The strength of the ...

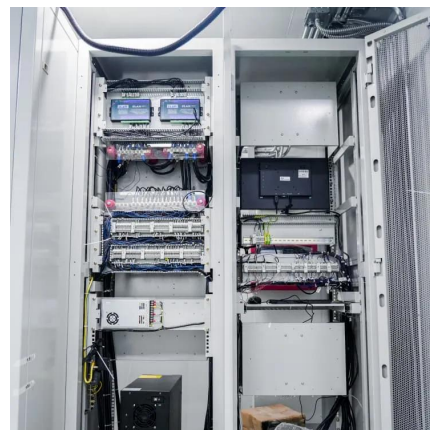


Communication Base Station Safety Standards , Huijue ...

As 5G deployments accelerate globally, communication base station safety standards face unprecedented challenges. Did you know that 68% of urban base stations now operate ...

Evaluated minimum safe distances for mobile-communication base stations

Aug 5, 2024 · In Table 1 are presented the minimum safe distances for GSM 900, GSM 1800 and 3G base stations, in terms of public and occupational exposure.





What is the Safe Distance From Cell Towers?

What's the Safe Distance From a Mobile Phone Tower? Radiation energy from a mobile tower decreases with distance. It is usually at its strongest within a 50- meter distance from the ...

What Distance is Safe?

Safe Distance from Cell Towers... It is also difficult to predict a safe distance from cell towers. For example, cell towers are designed to transmit most of their radio frequency (RF) energy ...



Base stations and networks

5 days ago · Mobile phones and mobile devices require a network of radio base stations to function. Radio waves have been used for communication for more than 100 years.

Safety Distance Calculations for Macrocell Mobile Base Station ...

Nov 19, 2017 · Wireless mobile communication networks have become essential for human life. A great booming and huge investments are devoted to develop the services without taking into ...





Contact Us

For technical specifications, project proposals, or partnership inquiries, please visit:
<https://www.eiei.pl>

Scan QR Code for More Information



<https://www.eiei.pl>